

Tool display stand's Catalogue

- 1. Peg/Punching board Tool Display Stand
- 2. Volcano board Tool Display Stand
- 3. Slat board Tool Display Stand



Peg/Punching Board Tool Display Stand



TD001

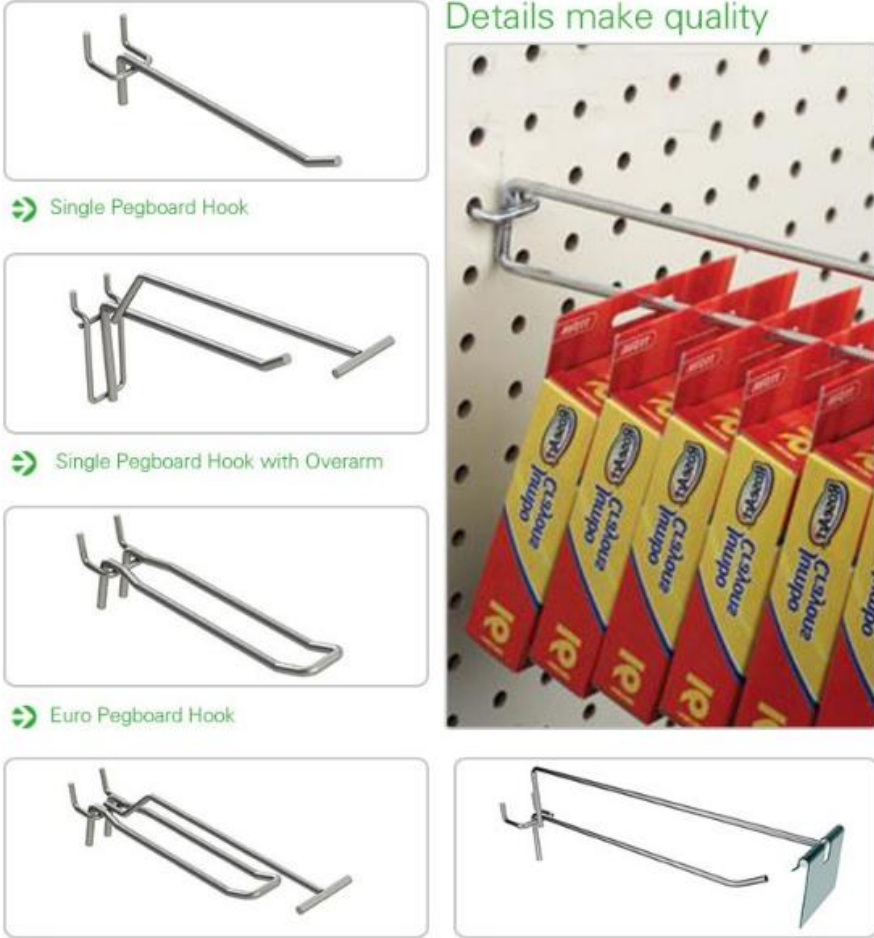


TD002

Peg/Punching Board Tool Display Stand with hooks

PEGBOARD HOOK DETAIL

Details make quality



- ⇒ Single Pegboard Hook
- ⇒ Single Pegboard Hook with Overarm
- ⇒ Euro Pegboard Hook
- ⇒ Euro Pegboard Hook with Overarm
- ⇒ Pegboard Hook with Price Tag

Volcano Board Tool Display Stand



TD003

Volcano Board Tool Display Stand with hooks



Slat Board Tool Display Stand



TD004



TD005

Slat board Tool Display Stand with hooks



Tool Display Stand can be used with hook,light box (with light or without light), layer board, advertising board,bottom ark etc.



With hook,light box, layer board



Advertising board(with light)



Layer board, Advertising board



Light box, bottom ark

Successful case



Children goods display stand

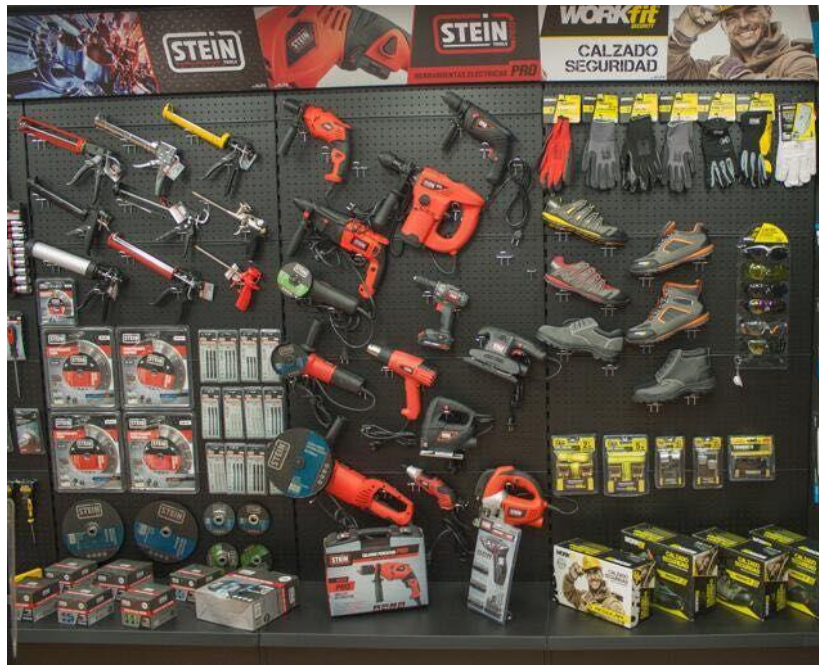


Spain client tool display stand



China client Car accessories display stand

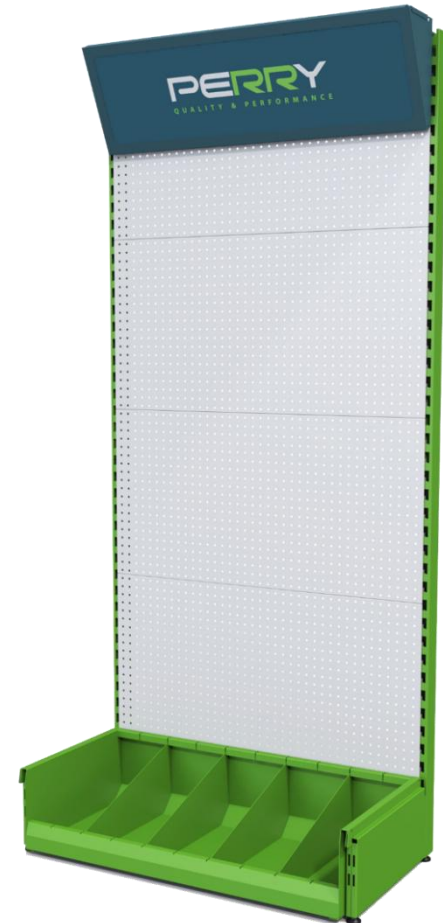
Successful case



Spain client tool display stand



UK client tool display stand



Successful case



Spain client tool display stand



Singapore client tool display stand



tool display stand

Tool Display Stand/Rack

**Size:

L900, 1000, 1200mm etc.

W510mm etc.

H1380, 1530, 1780, 1930, 2180mm etc.

**Load capacity:

Each layer: 60kg etc.

Each hook: 5-20kg etc.

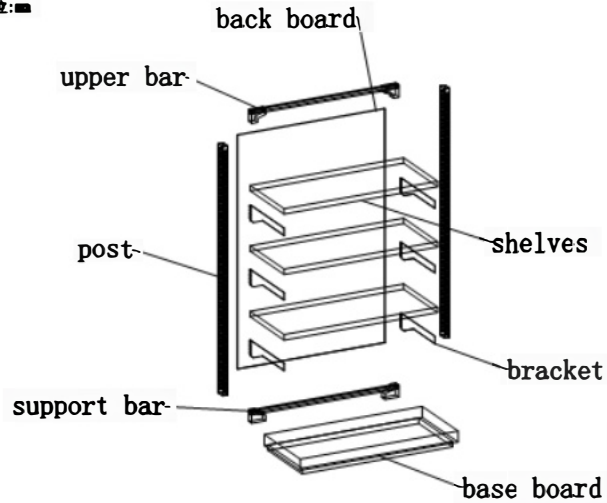


Installing Step

货架安装图

客户签名: _____

单位: mm



1, Installing the post, back board, support bar



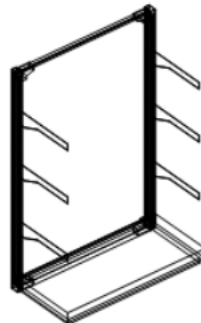
2, Installing upper bar



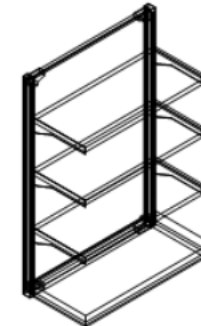
3, Installing base board



4, Installing bracket



5, Installing shelves



 **禾达货架**
HEDA SHELVES

注意事项

1. 此图版权归本公司所有, 未经设计者书面批准, 任何部分不得抄袭或复印。
2. 所有尺寸以所注数字为准, 并在工地现场核实无误。
3. 图纸所有问题解释权归属于本公司设计工程师所有。

设计:
DESIGNER:

制图:
DRAWER:

审核:
CHECKED:

比例:
SCALE: 1:1

日期:
DATE: 2016年11月02日

图号:
DWG:

项目负责人:
MANAGER:

备注:
REMARK:

Our Factory



Company's Certificate

Business Licence

营业执照
(副本)

编号: S0512015018506 (1-1)
统一社会信用代码: 91440105574020553N

名称: 广州市禾达货架有限公司
 类型: 有限责任公司(自然人投资或控股)
 住所: 广州市番禺区石碁镇南浦村南荔东路5-7号之五
 法定代表人: 刘宗模
 注册资本: 伍佰万元整
 成立日期: 2011年05月06日
 营业期限: 2011年05月06日至长期
 经营范围: 批发业(具体经营项目请登录广州市商事主体信息公示平台查询。依法须经批准的项目,经相关部门批准后方可开展经营活动。)

登记机关: 
2017年06月20日

二维码: 

企业信用信息公示系统网址: <http://eri.gz.gov.cn> 中华人民共和国国家工商行政管理总局监制

CE

EC Declaration of Conformity

Guangzhou HEDA shelves co.,Ltd.
2nd Floor, No.183, Exhibition South Quad, Xingang Dong road,
Haizhu District, Guangzhou

The following products have been tested by us with the listed standards and found in compliance with the European Community Construction Products Directive 89/101/EEC. Assessment of compliance of the product with the requirements relating to was based on the following standards:

EN 15512:2009

Product: Warehouse racking
 Model No.: WH(001-100)
 Parameters: /


The statement is based on a single evaluation of one sample of above mentioned products. It does not imply an assessment of the whole production and does not permit the use of the test lab. Logo. The manufacture should ensure that all products in series production are in conformity with the product sample detailed in this report. The applicant should hold the whole technical report at disposal of the competent all the right.

CE

After preparation of the necessary technical documentation as well as the conformity declaration the required CE marking can be affixed on the product.
 Other relevant directives have to be observed.

Marks Licence No.: ACT13122611
 Ref. Test Report: 68.5.13.10.2800.662
 Issued Date: 2013-12-26

Steve
Chief Director



Approved by: ACT Product Service Co., Ltd.
Website: www.act-ca.com

BV

Supplier Assessment Certificate

Certification No. 5667046_T

Guangzhou HEDA Shelves Co., Ltd.
广州市禾达货架有限公司
<http://hedashelf.en.alibaba.com>

Onsite assessment of the following areas was conducted by Bureau Veritas :

<input checked="" type="checkbox"/> Company Overview	<input checked="" type="checkbox"/> Human Resources
<input checked="" type="checkbox"/> Current Export Situation	<input checked="" type="checkbox"/> Export Business Capacity
<input checked="" type="checkbox"/> Quality Assurance	<input checked="" type="checkbox"/> Company Development-Expansion Plans
<input checked="" type="checkbox"/> Certification & Photos	<input checked="" type="checkbox"/> Company and Product Samples

Valid: 09 Jun 2013 to 08 Jun 2014

Issued by:  Assessed by: 
 Date of Issue: 09 Jun 2013 Certificate No. 5667046_T

Signature: 
 Title: Director for Bureau Veritas Certification Greater China

Contact Details

- Official company name in English: Guangzhou Heda Shelves Co., Ltd.
- Official address in detail: No.183, exhibition south Rd, xingang dong Rd, Haizhu district, Guangzhou City, Guangdong Province, PR China (PC: 510335)
- Website: www.hedastorage.com
- Contact person and title: Faye Lee
- Email: heda@hedastorage.com
- Phone/Whatsapp/WeChat: +86 135 1275 1081

