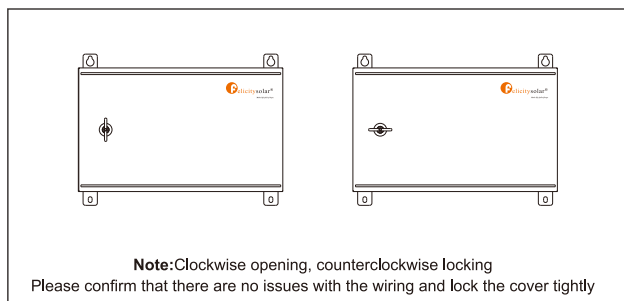
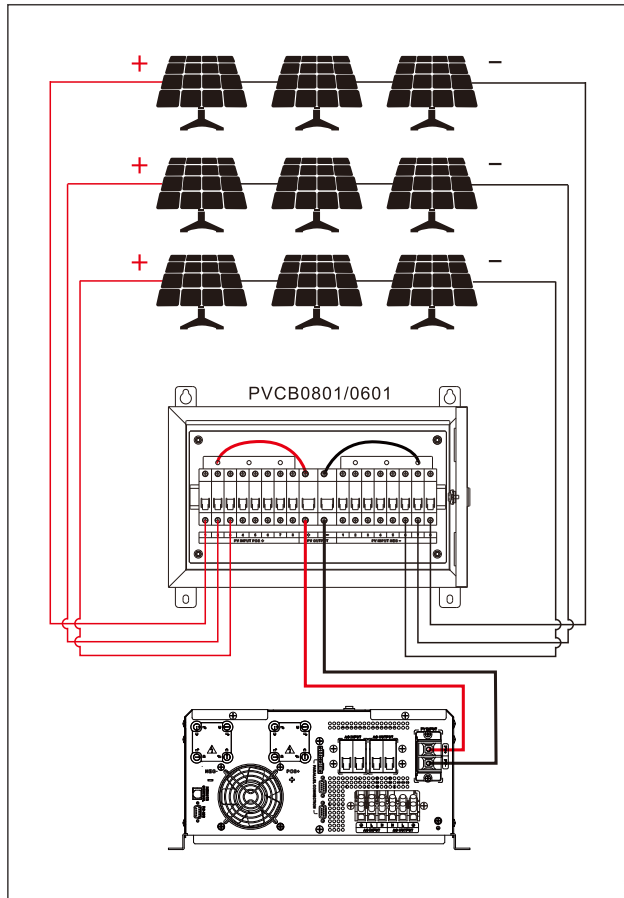


Connection diagram



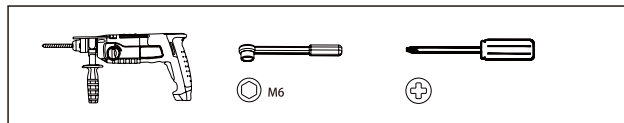
BATTERY COMBINER BOX

358-010333-00

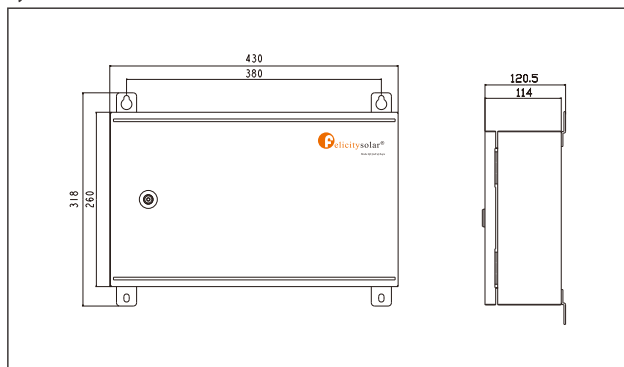
Environmental conditions

Max.+40°C	Min.-10°C	RH.+5%~+95%
Operating temperature range	-10°C~40°C	

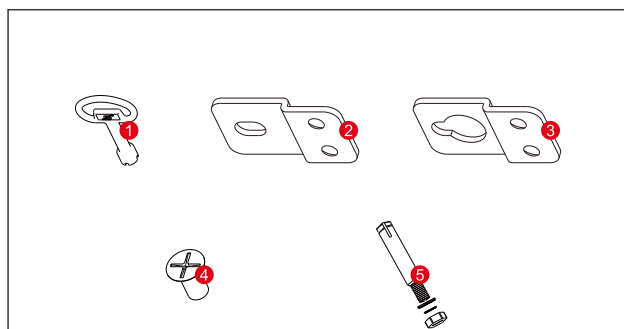
Installation tools



System size



Check



	Name
1	key
2	Locking iron plate x 2
3	Hanging ear iron plate x 2
4	M5*10 Cross countersunk head screw
5	6*50 expansion combination bolts x 4

Product model	PVCB0601	PVCB0801
Maximum input voltage	500V	500V
Maximum number of input paths	6	8
Maximum allowable input current of branch	15A	15A
Maximum output current	63A	63A
Lightning protection device	Surge switch	
Shell material	Metal chassis	
Input cable diameter	4~8mm ²	
Output cable diameter	5~10mm ²	
Protection level	IP54	
Operating temperature range	-10°C~40°C	
Net Weight(KG)	5.8KG	5.8KG
Gross Weight(KG)	6.7KG	6.7KG
Product Dimension(MM)	430×260×118MM	430×260×118MM
Package Dimension(MM)	487×337×179MM	487×337×179MM

Install Environment

