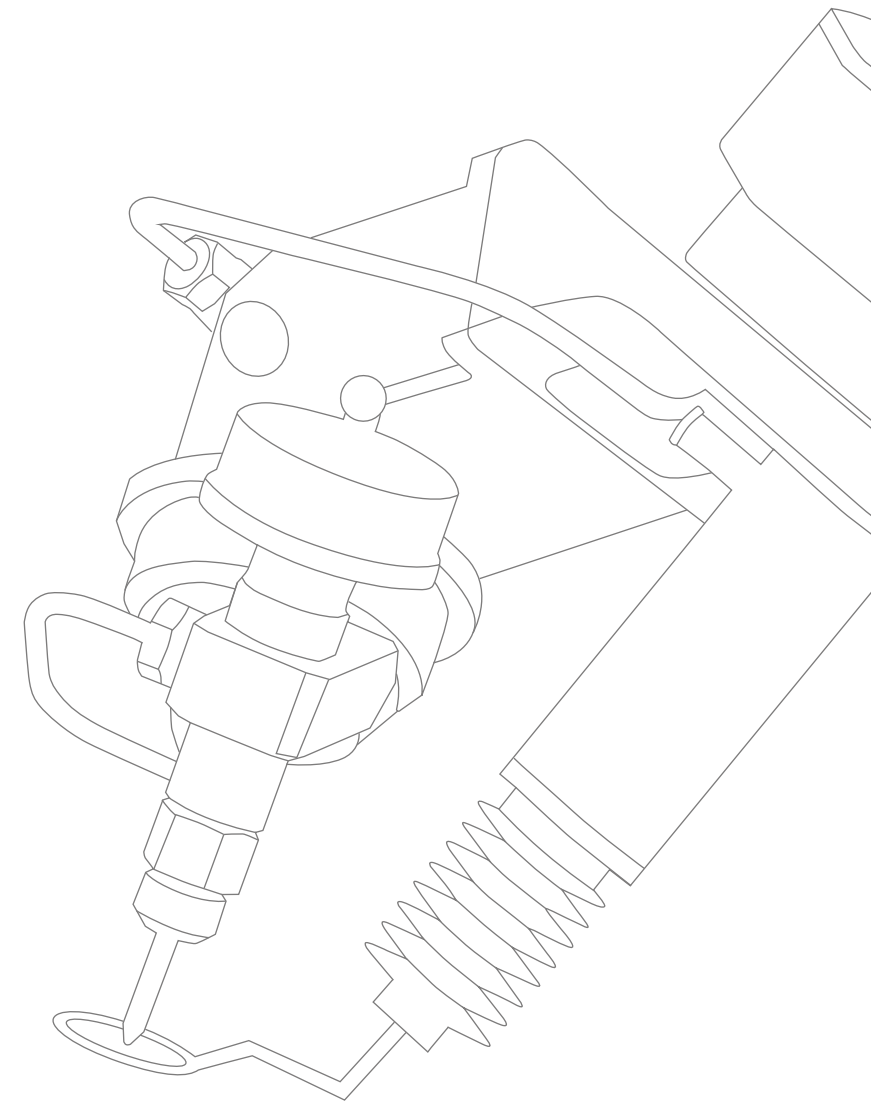


* The image shown here is indicative only. If there is inconsistency between the image and the actual product, the actual product shall govern.

* All technical data and specification in the brochure subject to change without notice.



创造客户价值
Value from innovation

UHP WATERJET CUTTING SYSTEM CATALOG



🌐 www.fedjetting.cn / www.fedjet.cn

☎ 025-8715 8850 / 18761833020

✉ wjsales@fedjetting.com

📍 No.1 Qianjin Road, Jiangning District,
Nanjing, Jiangsu Province, China



Wechat QR Code

JIANGSU FEDJETTING TECHNOLOGY CO., LTD.

CONTENTS

- 01 FedJet Precision Profile
- 02 FedJet Waterjet Cutting System
- 04 PowerJet C Cantilever Series Waterjet Cutting Machines
- 05 PowerJet G Gantry Series Waterjet Cutting Machines
- 06 SmartJet C Cantilever Series Waterjet Cutting Machines
- 07 SmartJet G Gantry Series Waterjet Cutting Machines
- 08 PrecisionJet Precision Series Waterjet Cutting Machines
- 09 Trend Series High Pressure Pumps
- 10 Waterjet Cutting System
- 11 Accessories

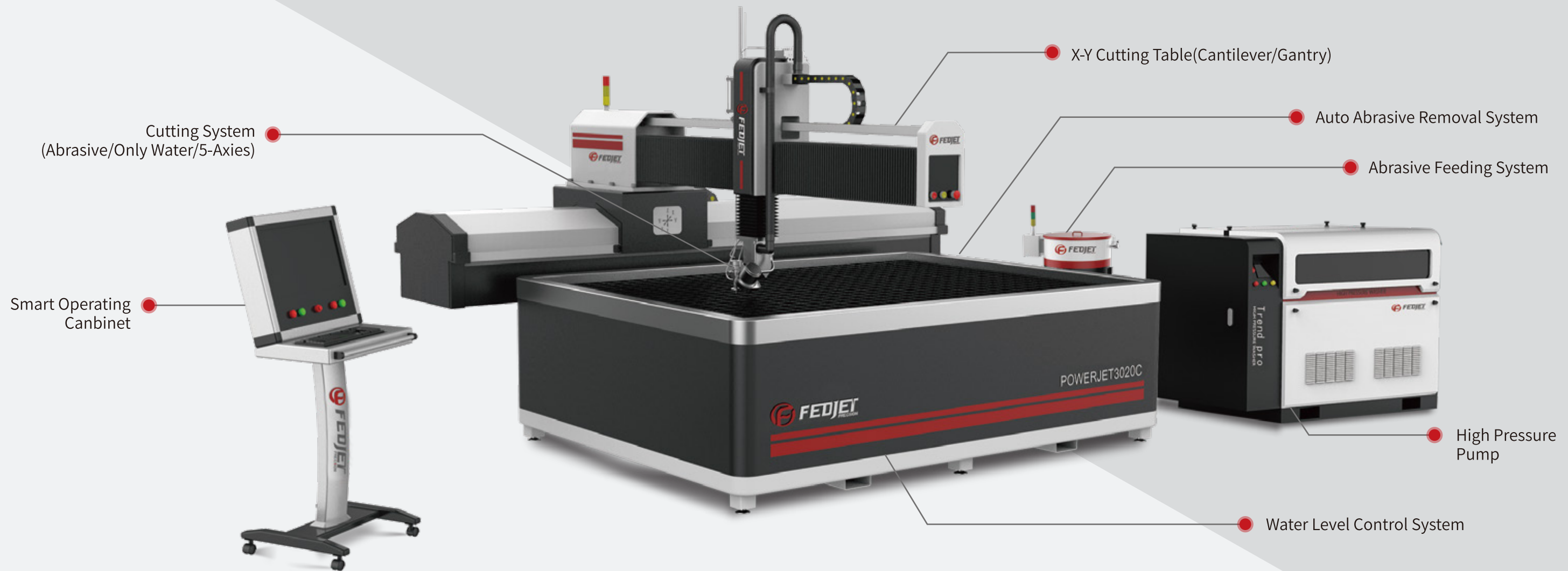
Professional Customized

Ultra-High Pressure Waterjet Cutting Solutions

FedJet Precision owned by Fedjetting Technology (Fedjetting Tech) is a high-tech enterprise specializing in the research, manufacture and sales of high precision waterjet cutting system. FedJet Precision provides professional and personalized waterjet cutting system solutions for customers in different industries.

FedJet has many years of experience engaged in ultra-high pressure system research and development and advocates a "quality and service to win the market" business philosophy. FedJet aims to improve production and quality control to ensure the stable and efficient operation of our product. FedJet product quality has always been at the forefront of the industry as the company uses international advanced testing equipment and implements stringent quality standards. We strive for personalized, effective, and fast service to our customers to help our customers improve their economic efficiency to the maximum extent.

FEDJET Precision WaterJet Cutting System



Other auxiliary systems:

- 5-axis Cutting System(Option)
- Multi-Cutting Heads(Option)
- Drill Head(Option)
- Auto Lifting System(Option)
- Water Softer (Option)
- Smart Oil Chiller (Option)
- Water Level Control System(Option)
- Auto Abrasive Feeding System(Option)
- Auto Abrasive Removal System(Option)
- Safty Grating System(Option)
- Laser Locating / Scanning System(Option)
- Wireless Remote Control Device(Option)

High Accuracy

High Stability

Enclosure Protection

Low Cost

Customization

PowerJet C Cantilever Series Waterjet Cutting Machines



Casting Base



High Accuracy



High Speed



Fully Enclosure Protection

BENEFITS:

- ✓ The whole casting foundation maintains high accuracy
- ✓ High precision transmission, fast travel speed and high precision
- ✓ Separated cutting table, 3-sided access for easy loading and unloading
- ✓ Cantilever structure is flexible for various materials and can adapt to larger parts
- ✓ Independent mobile operating cabinet
- ✓ Fully enclosed protective design to eliminate sand and water pollution of precision transmission components and to prolong the service life of the equipment
- ✓ The i-Telli Smart control system is a PC-based operating system, which is easy to use and reliable
- ✓ Wireless remote control handwheel
- ✓ Options and configurations to match your needs

Technical Data:

± 0.05 mm/m

linear Straightness Accuracy

20 m/min

Rapid Traverse Maximum

± 0.02 mm

Repeatability

X-axis(Base) Travel 2.5m/3.0m/4-12m | Y-axis(Bridge) 1.5m/2.0m | Z-axis Travel 150mm/200mm

PowerJet G Gantry Series Waterjet Cutting Machines



High Accuracy



High Speed



Fully Enclosure Protection

BENEFITS:

- ✓ Long bridge design for easy loading and unloading
- ✓ High precision transmission, fast travel speed and high accuracy
- ✓ Separated working table
- ✓ Fully enclosed protective design to eliminate sand and water pollution of precision transmission components and to prolong the service life of the equipment
- ✓ The i-Telli Smart control system is a PC-based operating system, which is easy to use and reliable
- ✓ Independent mobile operating cabinet
- ✓ Wireless remote control handwheel(Option)
- ✓ Options and configurations to match your needs(Option)

Technical Data:

± 0.05 mm/m

linear Straightness Accuracy

20 m/min

Rapid Traverse Maximum

± 0.02 mm

Repeatability

X-axis(Bridge) Travel 2.5m/3.0m/4.0m/5.0m | Y-axis(Base) 1.5m~20m | Z-axis Travel 150mm/200mm

SmartJet C Cantilever Series Waterjet Cutting Machines



Casting Base



High Stability



High Performance-Price Ratio

BENIFITS:

- ✓ The whole casting foundation maintains high accuracy
- ✓ Separated working table, 3-sided access for easy loading and unloading
- ✓ Cantilever structure is flexible for various materials and can adapt to larger parts
- ✓ Fully enclosed protective design to eliminate sand and water pollution of precision transmission components and to prolong the service life of the equipment
- ✓ The i-Telli Smart control system is a PC-based operating system, which is easy to use and reliable
- ✓ Independent mobile operating cabinet
- ✓ Wireless remote control handwheel
- ✓ Options and configurations to match your needs

Technical Data:

± 0.05 mm/m
linear Straightness Accuracy

10 m/min
Rapid Traverse Maximum

± 0.02 mm
Repeatability

X-axis(Base) Travel 2.5m/3.0m/4-12m | Y-axis(Bridge) 1.5m/2.0m | Z-axis Travel 150mm/200mm

SmartJet G Gantry Series Waterjet Cutting Machines



High Stability



Fully Enclosure Protection



High Performance-Price Ratio

BENIFITS:

- ✓ Long bridge design for easy loading and unloading
- ✓ Integrated structural design - perfect for smaller spaces
- ✓ Fully enclosed protective design to eliminate sand and water pollution of precision transmission components and to prolong the service life of the equipment
- ✓ Independent mobile operating cabinet
- ✓ The i-Telli Smart control system based on PC-Based operating system has high reliability and simple operation
- ✓ Wireless remote control handwheel
- ✓ Options and configurations to match your needs

Technical Data:

± 0.08 mm/m
linear Straightness Accuracy

8 m/min
Rapid Traverse Maximum

± 0.03 mm
Repeatability

X-axis(Bridge) Travel 2.5m/3.0m/4.0m | Y-axis(Base) 1.5m | Z-axis Travel 150mm/200mm

PrecisionJet High Precision Series Waterjet Cutting Machine Series



Full-enclosed



Casting Base



High Accuracy



High Stability

BENIFITS:

- ✓ The whole casting foundation maintains high accuracy
- ✓ High precision Bell screw and Linear guide
- ✓ Fully enclosed protective design to eliminate sand and water pollution of precision transmission components and to prolong the service life of the equipment
- ✓ 5A-Taper10 5-axis cutting system
- ✓ Integrated structural design- perfect for smaller spaces
- ✓ The i-Telli Smart control system is a PC-based operating system, which is easy to use and reliable
- ✓ Wireless remote control handwheel
- ✓ Options and configurations to match your needs

Technical Data:

$\pm 0.01/300\text{mm}$
linear Straightness Accuracy

10 m/min
Rapid Traverse Maximum

$\pm 0.01\text{mm}$
Repeatability

X-axis(Bridge) Travel 0.6m/0.8m/1.0m | Y-axis(Base) 0.8m/1.0m | Z-axis Travel 100mm/150mm

UHP Intensifier Pump



Trend Series Intensifier Pump



Trend Pro Series Intensifier Pump



High Stability



Long Life



High Performance-Price Ratio

FedJet pumps were engineered using AIPT(Advanced Intensifier Pump Technology) technology which serves to last longer and work more efficiently. This reduces operating costs and service times. The Fedjet pump creates a streamlined experience that includes a user-friendly operator interface.

BENIFITS:

- ✓ The intensifier assembly is based on ESL technology with the advantages of strong cutting ability, stable performance, long life, and usable for large-scale mass production.
- ✓ Designed for various materials and includes a unique dual pressure control, which provides a simple way to switch between two output pressures. This dual pressure control is especially suitable for cutting brittle and composite materials where a low pressure pierce may be necessary before a higher pressure cutting operation.
- ✓ The external PLC display screen of the high pressure pump is convenient and user-friendly. The customer can easily observe the operation data of the equipment, the engineer can easily operate the interface, set the alarm points, and make accurate and quick assessments.

Technical Data:

90/60K psi
Max. Output Pressure

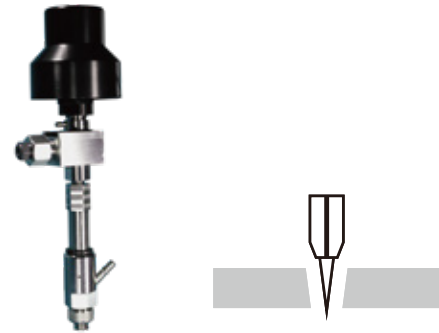
1L/2L
Capacity Of The Accumulator

Max. Flow Rate 1.14-6.8lpm | Horsepower 11-90kW | Max. Orifice Size 0.11~0.45mm

WaterJet Cutting Head

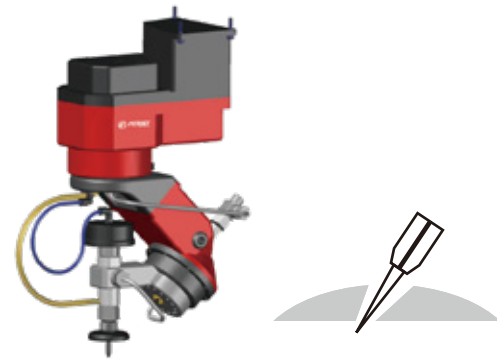
ACS/OWCS Standard Cutting System

For different materials, the Abrasive Cutting System(ACS)and the Only Water Cutting System(OWCS)are available. In standard waterjet cutting, the stream remains perpendicular to the material being cut at all times. The cut is usually in the shape of an "inverted horn", which is suitable for cutting various soft (rubber, leather, plastic, etc.) and hard materials (metal, glass, stone, composite materials, etc.).



5A-Taper10 5-Axis Cutting System

All waterjets exhibit stream lag and tapering when cutting through material. FedJet Precision's unique high precision 5A-Taper10($\pm 10^\circ$) five axis cutting system compensates for these inherent errors. The i-Telli smart PC control system 5A-Taper10 controls a wrist to automatically tilt and produces more accurate parts. When it is used in stone and ceramic processing, the perfect seam can be obtained when the cutting head is deflected 3-5°.



5A-Rotary60 5-Axis Cutting System

5A-Rotary60 is a five-axis cutting system with rotating axis developed by FedJet. It perfectly integrates 3D function with precision waterjet cutting technology, giving you the ultimate in accuracy, cutting speed and flexibility. The C axis can rotate around Z axis $\pm 360^\circ$, A axis can achieve $\pm 360^\circ$ deflection, which is usually used for plane or curved groove forming and cutting.

Accessories

AFS Automatic Feeding System

- AFS Abrasive Feeding System uses pneumatic pressure to automatically transport the garnet from an external abrasive hopper to the cutting head hopper. The 170L capacity allows for up to 8 hours of continuous feeding.



ARS Abrasive Removal System

- The abrasive waste in the worktable is automatically transported to the ARS removal system, which reduces labor and the downtime.

Smart Oil Chiller

- Smart Oil Chiller automatically controls the temperature of the hydraulic oil in the tank of ultra-high pressure pump, prolongs the service life of the high pressure seal and other spare parts and reduces the operation cost.



Accessories

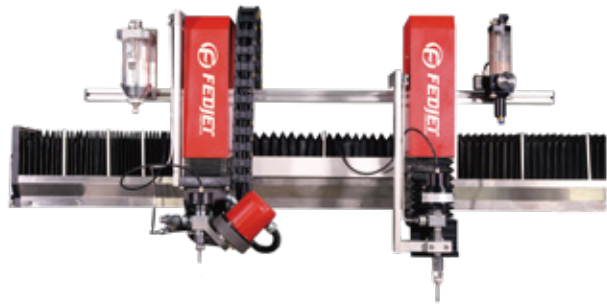
ALS Auto Lifting System

- The pneumatic / hydraulic drive Auto Lifting System can be turned over for automatic loading and unloading operation. This is especially suitable for stone and large size glass cutting.



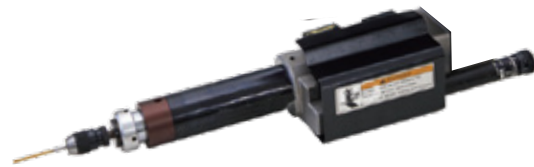
MCH Multi-Cutting Head

- Dual cutting head with the option of being with two different standard cutting heads. 5A-Taper10/5A-Bevel60/5A-Rotary60+standard cutting head or dual 5A-Taper10/5A-Bevel60/5A-Rotary60 cutting head.



DH Drill Head

- Achieve reliable piercing of composites and laminates with a pneumatic drill specifically designed for the waterjet environment.



WLCS Water Level Control System

- When cutting, the water level in the worktable will automatically adjust for underwater cutting and to effectively reduce noise.

