

# KSPOMVE®

PROFESSIONAL POWER SUPPLY MANUFACTURER

— 专业电源生产厂家 —



## 振欢集团有限公司

SHENZHENSHI ZHENHUAN ELECTRONIC CO., LTD  
SHENZHEN KEYSUN TECHNOLOGY LTD

深圳市振欢电子有限公司 ([www.szzhpower.com](http://www.szzhpower.com))

深圳市祺晨科技有限公司 ([www.keysuntech.com](http://www.keysuntech.com))

地址: 深圳市宝安区福永凤凰第一工业区凤兴巷  
1号景业坊工业园 2栋 8-9楼

电话: +86-755-81461285 传真: +86-755-81461215

TEL: +86-755-81461285

FAX: +86-755-81461215

ADDRESS: 8-9F, Building 2, Jingyefang Industrial Park, Fengxing Lane  
No.1, Fenghuang First Industrial Zone, Fuyong St., Bao'an District,  
Shenzhen, Guangdong, China 518103

<https://www.szzhpower.com> <https://www.keysuntech.com> E-mail: [power@szzhpower.com](mailto:power@szzhpower.com)



Shenzhen Zhenhuan Electronics Co, Ltd and Shenzhen Keysun Technology Limited. Founded in 2008, have own brand **KSPOWECS** is one professional manufacturer of China high quality power supply units. Set product development, design, manufacture, sales and service in one. We focus on Switching Power Supply, Ac -Dc Power Adapter, Battery Charger, Dimmable and non-dimmable Led Driver and so on.

The company has a number of automatic production line and excellent testing equipments, products of power from 5W~200W (voltage 4.2V-48V, current 0.1A-15A) a total of 1000 kinds of models, and most of its products approved UL, cUL, FCC, DOE, CEC, ErP, CE, RoHS, UKCA, CB, GS, SAA, C-TICK, PSE, KC, KCC, CCC, CQC, Safety Marks etc. certifications. With 3-5 years After-sales service.

Vision: To be a world famous power adapter enterprise with valuable and warm !

Mission: Concentrate on doing one thing well and provide competitive and reliable power supply for our customers !

深圳市振欢电子有限公司、深圳市祺晨科技有限公司，成立于2008年，自有品牌 **KSPOWECS**，是全球电源供应商、中国电子行业知名品牌；集产品研发、制造、销售、服务于一体，引领全球电源技术应用创新。我们专注于开关电源、电器、LED 驱动电源等，也致力于 LED 照明事业的发展，以向市场提供优质的产品为使命。产品功率从5W~200W (电压42-48V，电流0.1A-15A)共1000多种型号，公司拥有多条自动生产线及各种优良的检测设备，为生产高品质的产品提供了充分有力的保证，同时公司拥有一流的研发团队，以品质求生存，产品广泛应用于照明、通讯、家电、监控、医疗、音响、无人机、机器人3D打印机，按摩美容器材，自动化设备等。并通过了 UL, cUL, FCC, DOE, CEC, CE, RoHS, UKCA, CB, GS, Erp, SAA, C-TICK, PSE, KC, KCC, CCC, CQC, Safety Marks etc. 等多项国际认证，公司符合 ISO9001:2015质量管理体系认证。全系列产品实行符合RoHs 标准的无铅化生产，并定期将产品、原材料送第三方权威机构(SGS)测试，以确保产品符合RoHs 标准。我们以质量求生存，以技术求发展，坚持“顾客至上，群策群力，逐步完善，争创一流”的品质概念。同时，作为一个高新技术企业，本公司拥有一支高素质，高技术，充满活力和富有开拓精神批专业优秀的管理人员、工程师、技术员以及员工队伍，为公司之产品质量提供有力的保障。

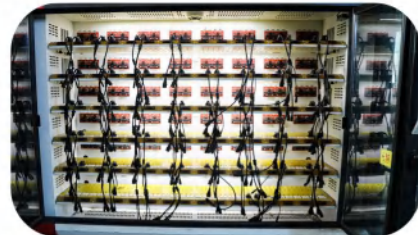
我们的愿景: 成为一个有价值有温度的世界知名电源品牌企业!

我们的使命: 专心致志做好一件事，为客户提供有竞争力，可信赖的好电源!

# 公司简介



## 老化设施 / AGING FACILITY



Every One of Our Products Goes through an Aging Facility

## 资质认证 / QUALIFICATION





## DIRECTORY INDEX 目录索引

## AC DC ADAPTER SERIES

## 电源适配器系列



# 5W-15W POWER ADAPTER

Optional Color

可选颜色

Black (黑色)

White (白色)

Gray (灰色)



Desktop Type (桌面式)  
2.79x1.53x0.98 (inch)/71x39x25mm



Fixed Line Type (固定线式)  
2.79x1.53x0.98 (inch)/71x39x25mm



Wall Mounted Square Type (插墙卧式)  
2.28x1.57x1.14 (inch)/58x40x29mm



Wall Mounted Narrow Type (插墙立式)  
2.28x1.73x1.14 (inch)/58x44x29mm



Detachable Plug Type (可拆卸插头式)  
2.28x1.57x1.14 (inch)/58x40x29mm

## Basic Technical Parameters / 基本技术参数

Input (输入): 100-240Vac 50/60Hz

Output Watts Option(适用功率范围): 5W~15W

Output Voltage Option(适用电压范围): 4.2V~36V

Output Current Option(适用电流范围): 100mA~1250mA

Output Mode (输出): Constant Voltage Mode (恒压模式)

Ripple & Noise(纹波噪声): 50mV~120mV

Energy Efficiency (能效等级): DOE, CEC, ErP, NRCAN, MEPS VI

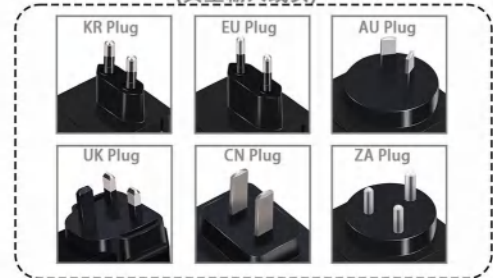
Certification (认证): UL/cUL FCC CE RoHS UKCA CB GS  
KC KCC SAA RCM PSE CCC etc.

Warranty (质保): 3 Years (3年)

OEM ODM Service (OEM ODM 服务)

LOGO/Color/Package/Case/Cord can be customized

### Typical AC Plug Option (典型输入线头)



### Typical DC Connector (典型输出接口)



## Typical Parameters (典型参数)

Watts (功率)	Output (输出)		Input (输入)	Optional Type (可选类型)	Optional AC Connector (可选输入接口)
	Volt (电压)	Amps (电流)			
5W - 15W	5V	1000mA	100-240Vac 50/60Hz	Desktop Type (桌面式) Fixed Line Type (固定线式) Wall Mounted (插墙式) Detachable Plug Type (可拆卸插头式)	 Fixed AC Plug (固定AC插头) Detachable AC Plug (可拆卸插头)
		2000mA			
	6V	1000mA			
		2000mA			
	12V	1000mA			
		1250mA			
	15V	500mA			
		1000mA			
	18V	500mA			
		250mA			
	24V	250mA			
		500mA			

# 18W-24W POWER ADAPTER

Optional Color  
可选颜色

Black (黑色)

White (白色)

Gray (灰色)



Desktop Type (桌面式)  
3.54x1.65x1.22 (inch)/90x42x31mm



Fixed Line Type (固定线式)  
3.54x1.65x1.22 (inch)/90x42x31mm



Wall Mounted Square Type (插墙卧式)  
2.75x1.49 x1.41 (inch)/70x38x36mm



Wall Mounted Narrow Type (插墙立式)  
2.75x1.73x1.14 (inch)/70x44x29mm



Detachable Plug Type (可拆卸插头式)  
2.75x1.49 x1.41 (inch)/70x38x36mm

## Basic Technical Parameters / 基本技术参数

Input (输入) : 100-240Vac 50/60Hz

Output Watts Option(适用功率范围): 18W~24W

Output Voltage Option(适用电压范围): 4.2V~36V

Output Current Option(适用电流范围): 100mA~3000mA

Output Mode (输出) : Constant Voltage Mode (恒压模式)

Ripple & Noise(纹波噪声) : 50mV~120mV

Energy Efficiency (能效等级) : DOE, CEC, ErP, NRCAN, MEPS VI

Certification (认证): UL/cUL FCC CE RoHS UKCA CB GS  
KC KCC SAA RCM PSE CCC etc.

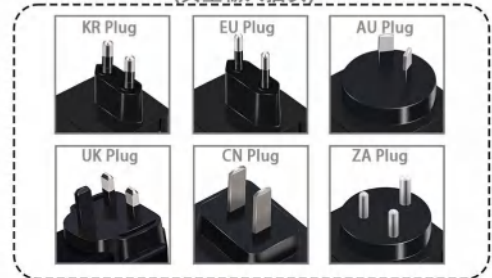
Warranty (质保) : 3 Years (3年)

OEM ODM Service (OEM ODM 服务)

LOGO/Color/Package/Case/Cord can be customized

### Typical AC Plug Option

(典型输入插头)



### Typical DC Connector

(典型输出接口)



## Typical Parameters (典型参数)

Watts (功率)	Output (输出)		Input (输入)	Optional Type (可选类型)	Optional AC Connector (可选输入接口)
	Volt (电压)	Amps (电流)			
18W - 24W	5V	2500mA	100-240Vac 50/60Hz	Desktop Type (桌面式) Fixed Line Type (固定线式) Wall Mounted (插墙式) Detachable Plug Type (可拆卸插头式)	 Fixed ac cable Fixed AC Plug (固定AC插头) Detachable AC Plug (可拆卸插头)
		3000mA			
	6V	2500mA			
		3000mA			
	12V	1500mA			
		2000mA			
	15V	1500mA			
	18V	1000mA			
	19V	1000mA			
	24V	750mA			
1000mA					
36V	500mA				

# 25W-39W POWER ADAPTER

Optional Color  
可选颜色

Black (黑色)

White (白色)

Gray (灰色)



Desktop Type (桌面式)  
3.7x1.81x1.26 (inch)/94x46x32mm



Fixed Line Type (固定线式)  
3.7x1.81x1.26 (inch)/94x46x32mm



Wall Mounted Type (插墙式)  
3.03x1.85x1.22 (inch)/77x47x31mm



Detachable Plug Type (可拆卸插头式)  
3.03x1.85x1.22 (inch)/77x47x31mm

## Basic Technical Parameters / 基本技术参数

Input (输入): 100-240Vac 50/60Hz

Output Watts Option(适用功率范围): 25W~39W

Output Voltage Option(适用电压范围): 4.2V~36V

Output Current Option(适用电流范围): 100mA~4000mA

Output Mode (输出): Constant Voltage Mode (恒压模式)

Ripple & Noise(纹波噪声): 50mV~120mV

Energy Efficiency (能效等级): DOE, CEC, ErP, NRCAN, MEPS VI

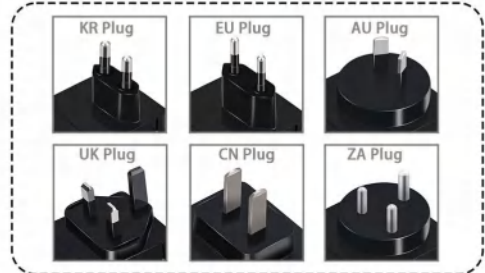
Certification (认证): UL/cUL FCC CE RoHS UKCA CB GS  
KC KCC SAA RCM PSE CCC etc.

Warranty (质保): 3 Years (3年)

OEM ODM Service (OEM ODM 服务)

LOGO/Color/Package/Case/Cord can be customized

### Typical AC Plug Option (典型输入插头)



### Typical DC Connector (典型输出接口)



## Typical Parameters (典型参数)

Watts (功率)	Output (输出)		Input (输入)	Optional Type (可选类型)	Optional AC Connector (可选输入接口)
	Volt (电压)	Amps (电流)			
25W - 39W	5V	3500mA	100-240Vac 50/60Hz	Desktop Type (桌面式) Fixed Line Type (固定线式) Wall Mounted (插墙式) Detachable Plug Type (可拆卸插头式)	 Fixed AC Plug (固定AC插头) Detachable AC Plug (可拆卸插头)
		4000mA			
	6V	3500mA			
		4000mA			
	12V	2500mA			
		3000mA			
	15V	2000mA			
		2500mA			
	18V	2000mA			
	19V	2000mA			
	24V	1250mA			
		1500mA			
36V	1000mA				



# 40W-65W POWER ADAPTER

Optional Color  
可选颜色

Black (黑色)

White (白色)

Gray (灰色)



Desktop Type (桌面式)  
4.49x1.97x1.22 (inch)/114x50x31mm



Fixed Line Type (固定线式)  
4.49x1.97x1.22 (inch)/114x50x31mm



Wall Mounted (插墙式)  
4.25x1.97x1.22 (inch)/108x50x31mm

## Basic Technical Parameters / 基本技术参数

Input (输入) : 100-240Vac 50/60Hz

Output Watts Option(适用功率范围) : 40W~65W

Output Voltage Option(适用电压范围) : 4.2V~36V

Output Current Option(适用电流范围) : 100mA~5400mA

Output Mode (输出) : Constant Voltage Mode (恒压模式)

Ripple & Noise(纹波噪声) : 50mV~120mV

Energy Efficiency (能效等级) : DOE, CEC, ErP, NRCAN, MEPS VI

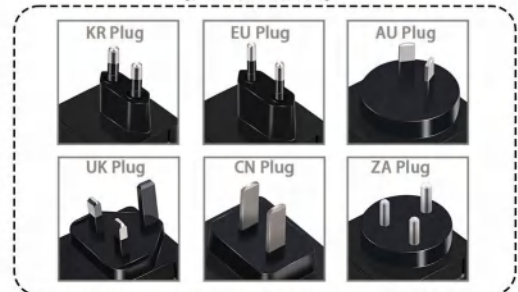
Certification (认证): UL/cUL FCC CE RoHS UKCA CB GS  
KC KCC SAA RCM PSE CCC etc.

Warranty (质保) : 3 Years (3年)

OEM ODM Service (OEM ODM 服务)

LOGO/Color/Package/Case/Cord can be customized

### Typical AC Plug Option (典型输入插头)



### Typical DC Connector (典型输出接口)



## Typical Parameters (典型参数)

Watts (功率)	Output (输出)		Input (输入)	Optional Type (可选类型)	Optional AC Connector (可选输入接口)
	Volt (电压)	Amps (电流)			
40W - 65W	5V	5000mA	100-240Vac 50/60Hz	Desktop Type (桌面式) Fixed Line Type (固定线式) Wall Mounted (插墙式)	
		6000mA			
	6V	5000mA			
		6000mA			
	12V	3500mA			
		4000mA			
	15V	3000mA			
		4000mA			
	18V	3000mA			
		3500mA			
	19V	3000mA			
	24V	2000mA			
		2500mA			
	36V	1500mA			
48V	1000mA				

# 67W-75W POWER ADAPTER

Optional Color  
可选颜色

Black (黑色)

White (白色)

Gray (灰色)



Desktop Type (桌面式)  
4.72x2.01x1.26 (inch)/120x51x32mm



Fixed Line Type (固定线式)  
4.72x2.01x1.26 (inch)/120x51x32mm

## Basic Technical Parameters / 基本技术参数

Input (输入) : 100-240Vac 50/60Hz

Output Watts Option(适用功率范围) : 67W~75W

Output Voltage Option(适用电压范围) : 4.2V~36V

Output Current Option(适用电流范围) : 100mA~6250mA

Output Mode (输出) : Constant Voltage Mode (恒压模式)

Ripple & Noise(纹波噪声) : 50mV~120mV

Energy Efficiency (能效等级) : DOE, CEC, ErP, NRCAN, MEPS VI

Certification (认证) : UL/cUL FCC CE RoHS UKCA CB GS  
KC KCC SAA RCM PSE CCC etc.

Warranty (质保) : 3 Years (3年)

OEM ODM Service (OEM ODM 服务)

LOGO/Color/Package/Case/Cord can be customized

### Typical AC Cable Plug (典型输入线插头)



### Typical DC Connector (典型输出接口)



## Typical Parameters (典型参数)

Watts (功率)	Output (输出)		Input (输入)	Optional Type (可选类型)	Optional AC Connector (可选输入接口)
	Volt (电压)	Amps (电流)			
67W - 75W	5V	6500mA	100-240Vac 50/60Hz	Desktop Type (桌面式) Fixed Line Type (固定线式)	
	6V	6500mA			
	12V	6000mA			
		6250mA			
	15V	4500mA			
		5000mA			
	18V	4000mA			
	19V	3500mA			
	24V	3000mA			
	36V	2000mA			
48V	1500mA				

# 78W-100W POWER ADAPTER

Optional Color  
可选颜色

Black (黑色)

White (白色)

Gray (灰色)



Desktop Type (桌面式)  
6.02x2.36x1.49 (inch)/153x60x38mm



Fixed Line Type (固定线式)  
6.02x2.36x1.49 (inch)/153x60x38mm

## Basic Technical Parameters / 基本技术参数

Input (输入) : 100-240Vac 50/60Hz

Output Watts Option(适用功率范围) : 78W~100W

Output Voltage Option(适用电压范围) : 4.2V~36V

Output Current Option(适用电流范围) : 100mA~8330mA

Output Mode (输出) : Constant Voltage Mode (恒压模式)

Ripple & Noise(纹波噪声) : 50mV~120mV

Energy Efficiency (能效等级) : DOE, CEC, ErP, NRCAN, MEPS VI

Certification (认证) : UL/cUL FCC CE RoHS UKCA CB GS  
KC KCC SAA RCM PSE CCC etc.

Warranty (质保) : 3 Years (3年)

OEM ODM Service (OEM ODM 服务)

LOGO/Color/Package/Case/Cord can be customized

### Typical AC Cable Plug (典型输入线插头)



### Typical DC Connector (典型输出接口)



## Typical Parameters (典型参数)

Watts (功率)	Output (输出)		Input (输入)	Optional Type (可选类型)	Optional AC Connector (可选输入接口)
	Volt (电压)	Amps (电流)			
78W - 100W	5V	7000mA	100-240Vac 50/60Hz	Desktop Type (桌面式) Fixed Line Type (固定线式)	
		8000mA			
	6V	7000mA			
		8000mA			
	12V	6500mA			
		7000mA			
		8000mA			
	15V	5500mA			
		6000mA			
		6500mA			
	18V	4500mA			
		5000mA			
		5500mA			
	19V	4000mA			
		4500mA			
		5000mA			
	24V	3500mA			
		3750mA			
4000mA					
36V	2250mA				
	2500mA				
	2000mA				

# 105W-150W POWER ADAPTER

Optional Color  
可选颜色

Black (黑色)

White (白色)

Gray (灰色)



Desktop Type (桌面式)  
6.77x2.83x1.65 (inch)/172x72x42mm



Fixed Line Type (固定线式)  
6.77x2.83x1.65 (inch)/172x72x42mm

## Basic Technical Parameters / 基本技术参数

Input (输入): 100-240Vac 50/60Hz

Output Watts Option(适用功率范围): 105W~150W

Output Voltage Option(适用电压范围): 4.2V~36V

Output Current Option(适用电流范围): 100mA~12500mA

Output Mode (输出): Constant Voltage Mode (恒压模式)

Ripple & Noise(纹波噪声): 50mV~120mV

Energy Efficiency (能效等级): DOE, CEC, ErP, NRCAN, MEPS VI

Certification (认证): UL/cUL FCC CE RoHS UKCA CB GS  
KC KCC SAA RCM PSE CCC etc.

Warranty (质保): 3 Years (3年)

OEM ODM Service (OEM ODM 服务)

LOGO/Color/Package/Case/Cord can be customized

### Typical AC Cable Plug (典型输入线插头)



### Typical DC Connector (典型输出接口)



## Typical Parameters (典型参数)

Watts (功率)	Output (输出)		Input (输入)	Optional Type (可选类型)	Optional AC Connector (可选输入接口)
	Volt (电压)	Amps (电流)			
105W - 150W	12V	8500mA	100-240Vac 50/60Hz	Desktop Type (桌面式) Fixed Line Type (固定线式)	
		9000mA			
		9500mA			
		10000mA			
		12500mA			
	15V	7000mA			
		7500mA			
		8000mA			
		9000mA			
		10000mA			
	18V	6000mA			
		6500mA			
		7000mA			
	19V	8000mA			
		5500mA			
		6000mA			
	24V	6500mA			
		7000mA			
		4500mA			
		5000mA			
	36V	5500mA			
		3000mA			
		3500mA			
	48V	4000mA			
2500mA					
		3000mA			

# 160W-200W POWER ADAPTER

Optional Color  
可选颜色

Black (黑色)

White (白色)

Gray (灰色)



Desktop Type (桌面式)  
6.69x3.34x1.61 (inch)/170x85x41mm



Fixed Line Type (固定线式)  
6.69x3.34x1.61 (inch)/170x85x41mm

## Basic Technical Parameters / 基本技术参数

Input (输入): 100-240Vac 50/60Hz

Output Watts Option(适用功率范围): 160W~200W

Output Voltage Option(适用电压范围): 4.2V~36V

Output Current Option(适用电流范围): 100mA~15000mA

Output Mode (输出): Constant Voltage Mode (恒压模式)

Ripple & Noise(纹波噪声): 50mV~120mV

Energy Efficiency (能效等级): DOE, CEC, ErP, NRCAN, MEPS VI

Certification (认证): UL/cUL FCC CE RoHS UKCA CB GS  
KC KCC SAA RCM PSE CCC etc.

Warranty (质保): 3 Years (3年)

OEM ODM Service (OEM ODM 服务)

LOGO/Color/Package/Case/Cord can be customized

### Typical AC Cable Plug (典型输入线插头)



### Typical DC Connector (典型输出接口)



## Typical Parameters (典型参数)

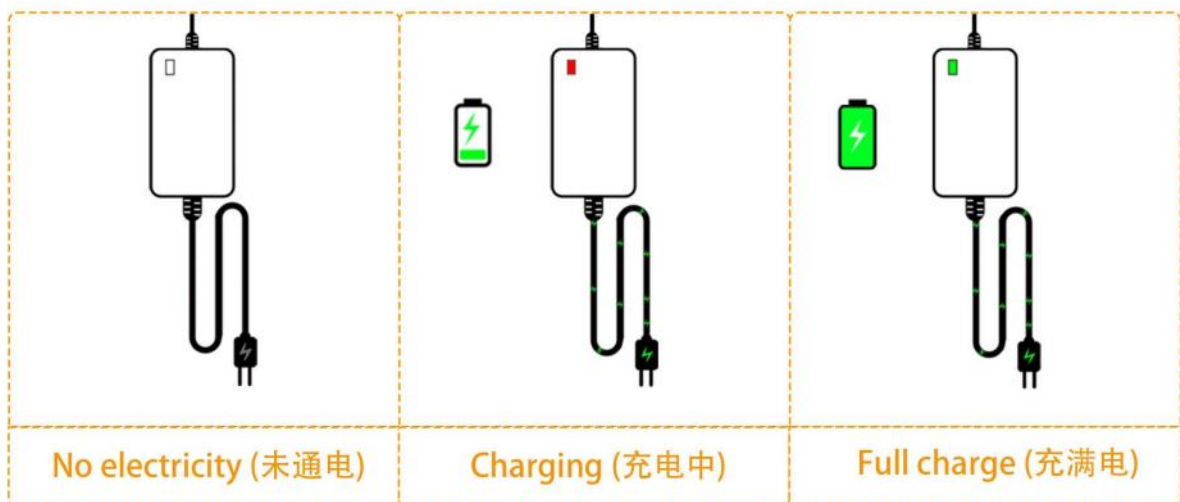
Watts (功率)	Output (输出)		Input (输入)	Optional Type (可选类型)	Optional AC Connector (可选输入接口)
	Volt (电压)	Amps (电流)			
160W - 200W	12V	14000mA	100-240Vac 50/60Hz	Desktop Type (桌面式) Fixed Line Type (固定线式)	
		15000mA			
	15V	11000mA			
		12000mA			
	18V	9000mA			
		10000mA			
	19V	8000mA			
		9000mA			
	24V	6500mA			
		7000mA			
		8300mA			
	36V	5000mA			
		5500mA			
	48V	3500mA			
4000mA					

**LITHIUM BATTERY CHARGER SERIES**

**锂电池充电器系列**



**Charging status / 充电状态**



# 5W-15W LI-ION BATTERY CHARGER

Optional Color  
可选颜色

Black (黑色)

White (白色)

Gray (灰色)



Desktop Type (桌面式)  
2.79x1.53x0.98 (inch) / 71x39x25mm



Fixed Line Type (固定线式)  
2.79x1.53x0.98 (inch) / 71x39x25mm



Wall Mounted Square Type (插墙卧式)  
2.28x1.57x1.14 (inch) / 58x40x29mm



Wall Mounted Narrow Type (插墙立式)  
2.36x1x1.77 (inch) / 60x26x45mm

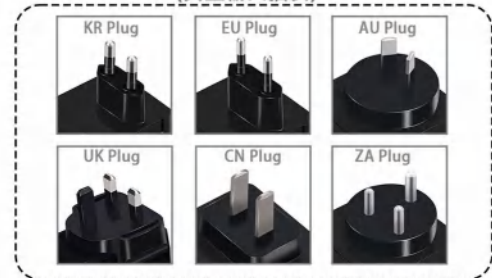


Detachable Plug Type (可拆卸插头式)  
2.28x1.57x1.14 (inch) / 58x40x29mm

## Basic Technical Parameters / 基本技术参数

- Input (输入): 100-240Vac 50/60Hz
- Output Watts Option(适用功率范围): 5W~15W
- Output Voltage Option(适用电压范围): 4.2V~36V
- Output Current Option(适用电流范围): 100mA~1250mA
- Output Mode (输出): CC + CV Mode (恒流恒压模式)
- Ripple & Noise(纹波噪声): 50mV~120mV
- Energy Efficiency (能效等级): DOE, CEC, ErP, NRCAN, MEPS VI
- Certification (认证): UL/cUL FCC CE RoHS UKCA CB GS KC KCC SAA RCM PSE CCC etc.
- Warranty (质保): 3 Years (3年)
- OEM ODM Service (OEM ODM 服务)
- LOGO/Color/Package/Case/Cord can be customized

### Typical AC Plug Option (典型输入插头)



### Typical DC Connector (典型输出接口)



## Typical Parameters (典型参数)

Lithium Battery (锂电池)	Nominal Voltage (标称电压)	Charging Voltage (充电电压)	Maximum charging current (最高可充电电流)	Optional Type (可选类型)
1 String (1串)	3.7V	4.2V	2000mA	Desktop Type (桌面式) Fixed Line Type (固定线式) Wall Mounted (插墙式) Detachable Plug Type (可拆卸插头式)
	3.2V	3.6V ~ 3.65V	2000mA	
2 String (2串)	7.4V	8.4V	1780mA	
	6.4V	7.2V ~ 7.3V	2000mA	
3 String (3串)	11.1V	12.6V	1190mA	
	9.6V	10.8V ~ 10.95V	1380mA	
4 String (4串)	14.8V	16.8V	890mA	
	12.8V	14.4V ~ 14.6V	1040mA	

# 18W-39W LI-ION BATTERY CHARGER

Optional Color  
可选颜色

Black (黑色)

White (白色)

Gray (灰色)



Desktop Type (桌面式)  
3.7x1.81x1.26 (inch) / 94x46x32mm



Fixed Line Type (固定线式)  
3.7x1.81x1.26 (inch) / 94x46x32mm



Wall Mounted Type (插墙式)  
3.03x1.85x1.22 (inch) / 77x47x31mm



Detachable Plug Type (可拆卸插头式)  
3.03x1.85x1.22 (inch) / 77x47x31mm

## Basic Technical Parameters / 基本技术参数

Input (输入): 100-240Vac 50/60Hz

Output Watts Option(适用功率范围): 18W~39W

Output Voltage Option(适用电压范围): 4.2V~36V

Output Current Option(适用电流范围): 100mA~4000mA

Output Mode (输出): CC + CV Mode (恒流恒压模式)

Ripple & Noise(纹波噪声): 50mV~120mV

Energy Efficiency (能效等级): DOE, CEC, ErP, NRCAN, MEPS VI

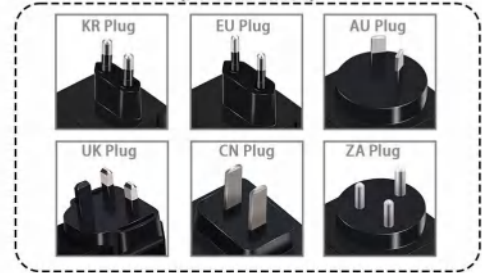
Certification (认证): UL/cUL FCC CE RoHS UKCA CB GS  
KC KCC SAA RCM PSE CCC etc.

Warranty (质保): 3 Years (3年)

OEM ODM Service (OEM ODM 服务)

LOGO/Color/Package/Case/Cord can be customized

### Typical AC Plug Option (典型输入插头)



### Typical DC Connector (典型输出接口)



## Typical Parameters (典型参数)

Lithium Battery (锂电池)	Nominal Voltage (标称电压)	Charging Voltage (充电电压)	Maximum charging current (最高可充电电流)	Optional Type (可选类型)
1 String (1串)	3.7V	4.2V	4000mA	Desktop Type (桌面式) Fixed Line Type (固定线式) Wall Mounted (插墙式) Detachable Plug Type (可拆卸插头式)
	3.2V	3.6V ~ 3.65V	4000mA	
2 String (2串)	7.4V	8.4V	4000mA	
	6.4V	7.2V ~ 7.3V	4000mA	
3 String (3串)	11.1V	12.6V	3100mA	
	9.6V	10.8V ~ 10.95V	3600mA	
4 String (4串)	14.8V	16.8V	2300mA	
	12.8V	14.4V ~ 14.6V	2700mA	
5 String (5串)	18.5V	21V	1850mA	
	16V	18V ~ 18.25V	2160mA	
6 String (6串)	22.2V	25.2V	1540mA	
	19.2V	21.6V ~ 21.9V	1800mA	
7 String (7串)	25.9V	29.4V	1320mA	
	22.4V	25.2V ~ 25.55V	1540mA	
8 String (8串)	29.6V	33.6V	1160mA	
	25.6V	28.8V ~ 29.2V	1350mA	
9 String (9串)	33.3V	37.8V	1030mA	
	28.8V	32.4V ~ 32.85V	1200mA	



# 40W-65W LI-ION BATTERY CHARGER

Optional Color  
可选颜色

Black (黑色)

White (白色)

Gray (灰色)



Desktop Type (桌面式)  
4.49x1.97x1.22 (inch) / 114x50x31mm



Fixed Line Type (固定线式)  
4.49x1.97x1.22 (inch) / 114x50x31mm



Wall Mounted (插墙式)  
4.49x1.97x1.22 (inch) / 114x50x31mm

## Basic Technical Parameters / 基本技术参数

Input (输入): 100-240Vac 50/60Hz

Output Watts Option(适用功率范围): 40W~65W

Output Voltage Option(适用电压范围): 4.2V~36V

Output Current Option(适用电流范围): 100mA~5400mA

Output Mode (输出): CC + CV Mode (恒流恒压模式)

Ripple & Noise(纹波噪声): 50mV~120mV

Energy Efficiency (能效等级): DOE, CEC, ErP, NRCAN, MEPS VI

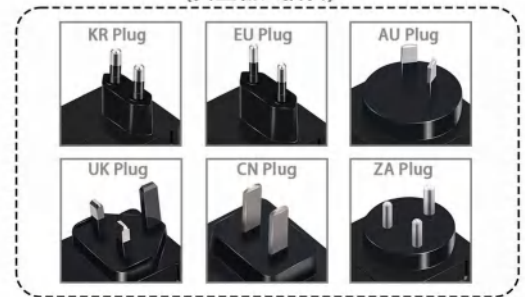
Certification (认证): UL/cUL FCC CE RoHS UKCA CB GS  
KC KCC SAA RCM PSE CCC etc.

Warranty (质保): 3 Years (3年)

OEM ODM Service (OEM ODM 服务)

LOGO/Color/Package/Case/Cord can be customized

### Typical AC Plug Option (典型输入插头)



### Typical DC Connector (典型输出接口)



## Typical Parameters (典型参数)

Lithium Battery (锂电池)	Nominal Voltage (标称电压)	Charging Voltage (充电电压)	Maximum charging current (最高可充电电流)	Optional Type (可选类型)
2 String (2串)	7.4V	8.4V	6000mA	Desktop Type (桌面式) Fixed Line Type (固定线式) Wall Mounted (插墙式)
	6.4V	7.2V ~ 7.3V	6000mA	
3 String (3串)	11.1V	12.6V	5200mA	
	9.6V	10.8V ~ 10.95V	6000mA	
4 String (4串)	14.8V	16.8V	3900mA	
	12.8V	14.4V ~ 14.6V	4500mA	
5 String (5串)	18.5V	21V	3100mA	
	16V	18V ~ 18.25V	3600mA	
6 String (6串)	22.2V	25.2V	2600mA	
	19.2V	21.6V ~ 21.9V	3000mA	
7 String (7串)	25.9V	29.4V	2200mA	
	22.4V	25.2V ~ 25.55V	2600mA	
8 String (8串)	29.6V	33.6V	1900mA	
	25.6V	28.8V ~ 29.2V	2250mA	
9 String (9串)	33.3V	37.8V	1700mA	
	28.8V	32.4V ~ 32.85V	2000mA	

# 67W-75W LI-ION BATTERY CHARGER

Optional Color  
可选颜色

Black (黑色)

White (白色)

Gray (灰色)



Desktop Type (桌面式)  
4.72x2.01x1.26 (inch) / 120x51x32mm



Fixed Line Type (固定线式)  
4.72x2.01x1.26 (inch) / 120x51x32mm

## Basic Technical Parameters / 基本技术参数

Input (输入): 100-240Vac 50/60Hz

Output Watts Option(适用功率范围): 67W~75W

Output Voltage Option(适用电压范围): 4.2V~36V

Output Current Option(适用电流范围): 100mA~6250mA

Output Mode (输出): CC + CV Mode (恒流恒压模式)

Ripple & Noise(纹波噪声): 50mV~120mV

Energy Efficiency (能效等级): DOE, CEC, ErP, NRCAN, MEPS VI

Certification (认证): UL/cUL FCC CE RoHS UKCA CB GS  
KC KCC SAA RCM PSE CCC etc.

Warranty (质保): 3 Years (3年)

OEM ODM Service (OEM ODM 服务)

LOGO/Color/Package/Case/Cord can be customized

### Typical AC Cable Plug (典型输入线插头)



### Typical DC Connector (典型输出接口)



## Typical Parameters (典型参数)

Lithium Battery (锂电池)	Nominal Voltage (标称电压)	Charging Voltage (充电电压)	Maximum charging current (最高可充电电流)	Optional Type (可选类型)
2 String (2串)	7.4V	8.4V	6500mA	Desktop Type (桌面式) Fixed Line Type (固定线式)
	6.4V	7.2V ~ 7.3V	6500mA	
3 String (3串)	11.1V	12.6V	5900mA	
	9.6V	10.8V ~ 10.95V	6500mA	
4 String (4串)	14.8V	16.8V	4460mA	
	12.8V	14.4V ~ 14.6V	5200mA	
5 String (5串)	18.5V	21V	3570mA	
	16V	18V ~ 18.25V	4160mA	
6 String (6串)	22.2V	25.2V	3000mA	
	19.2V	21.6V ~ 21.9V	3470mA	
7 String (7串)	25.9V	29.4V	2550mA	
	22.4V	25.2V ~ 25.55V	3000mA	
8 String (8串)	29.6V	33.6V	2230mA	
	25.6V	28.8V ~ 29.2V	2600mA	
9 String (9串)	33.3V	37.8V	2000mA	
	28.8V	32.4V ~ 32.85V	2300mA	

# 78W-100W LI-ION BATTERY CHARGER

Optional Color  
可选颜色

Black (黑色)

White (白色)

Gray (灰色)



Desktop Type (桌面式)  
6.02x2.36x1.49 (inch) / 153x60x38mm



Fixed Line Type (固定线式)  
6.02x2.36x1.49 (inch) / 153x60x38mm

## Basic Technical Parameters / 基本技术参数

Input (输入): 100-240Vac 50/60Hz

Output Watts Option(适用功率范围): 78W~100W

Output Voltage Option(适用电压范围): 4.2V~36V

Output Current Option(适用电流范围): 100mA~8330mA

Output Mode (输出): CC + CV Mode (恒流恒压模式)

Ripple & Noise(纹波噪声): 50mV~120mV

Energy Efficiency (能效等级): DOE, CEC, ErP, NRCAN, MEPS VI

Certification (认证): UL/cUL FCC CE RoHS UKCA CB GS  
KC KCC SAA RCM PSE CCC etc.

Warranty (质保): 3 Years (3年)

OEM ODM Service (OEM ODM 服务)

LOGO/Color/Package/Case/Cord can be customized

### Typical AC Cable Plug (典型输入线插头)



### Typical DC Connector (典型输出接口)



## Typical Parameters (典型参数)

Lithium Battery (锂电池)	Nominal Voltage (标称电压)	Charging Voltage (充电电压)	Maximum charging current (最高可充电电流)	Optional Type (可选类型)
2 String (2串)	7.4V	8.4V	8000mA	Desktop Type (桌面式) Fixed Line Type (固定线式)
	6.4V	7.2V ~ 7.3V	8000mA	
3 String (3串)	11.1V	12.6V	7900mA	
	9.6V	10.8V ~ 10.95V	8000mA	
4 String (4串)	14.8V	16.8V	6000mA	
	12.8V	14.4V ~ 14.6V	7000mA	
5 String (5串)	18.5V	21V	4760mA	
	16V	18V ~ 18.25V	5550mA	
6 String (6串)	22.2V	25.2V	4000mA	
	19.2V	21.6V ~ 21.9V	4630mA	
7 String (7串)	25.9V	29.4V	3400mA	
	22.4V	25.2V ~ 25.55V	4000mA	
8 String (8串)	29.6V	33.6V	3000mA	
	25.6V	28.8V ~ 29.2V	3470mA	
9 String (9串)	33.3V	37.8V	2640mA	
	28.8V	32.4V ~ 32.85V	3080mA	

# 105W-150W LI-ION BATTERY CHARGER

Optional Color  
可选颜色

Black (黑色)

White (白色)

Gray (灰色)



Desktop Type (桌面式)  
6.77x2.83x1.65 (inch) / 172x72x42mm



Fixed Line Type (固定线式)  
6.77x2.83x1.65 (inch) / 172x72x42mm

## Basic Technical Parameters / 基本技术参数

Input (输入): 100-240Vac 50/60Hz

Output Watts Option(适用功率范围): 105W~150W

Output Voltage Option(适用电压范围): 4.2V~36V

Output Current Option(适用电流范围): 100mA~12500mA

Output Mode (输出): CC + CV Mode (恒流恒压模式)

Ripple & Noise(纹波噪声): 50mV~120mV

Energy Efficiency (能效等级): DOE, CEC, ErP, NRCAN, MEPS VI

Certification (认证): UL/cUL FCC CE RoHS UKCA CB GS  
KC KCC SAA RCM PSE CCC etc.

Warranty (质保): 3 Years (3年)

OEM ODM Service (OEM ODM 服务)

LOGO/Color/Package/Case/Cord can be customized

Typical AC Cable Plug  
(典型输入线插头)



Typical DC Connector  
(典型输出接口)



## Typical Parameters (典型参数)

Lithium Battery (锂电池)	Nominal Voltage (标称电压)	Charging Voltage (充电电压)	Maximum charging current (最高可充电电流)	Optional Type (可选类型)
2 String (2串)	7.4V	8.4V	10000mA	Desktop Type (桌面式) Fixed Line Type (固定线式)
	6.4V	7.2V ~ 7.3V	10000mA	
3 String (3串)	11.1V	12.6V	11900mA	
	9.6V	10.8V ~ 10.95V	10000mA	
4 String (4串)	14.8V	16.8V	8900mA	
	12.8V	14.4V ~ 14.6V	10400mA	
5 String (5串)	18.5V	21V	7140mA	
	16V	18V ~ 18.25V	8330mA	
6 String (6串)	22.2V	25.2V	6000mA	
	19.2V	21.6V ~ 21.9V	7000mA	
7 String (7串)	25.9V	29.4V	5100mA	
	22.4V	25.2V ~ 25.55V	6000mA	
8 String (8串)	29.6V	33.6V	4460mA	
	25.6V	28.8V ~ 29.2V	5200mA	
9 String (9串)	33.3V	37.8V	4000mA	
	28.8V	32.4V ~ 32.85V	4630mA	



# KSPOWIEC®

## 振欢集团有限公司

SHENZHENSHI ZHENHUAN ELECTRONIC CO., LTD  
SHENZHEN KEYSUN TECHNOLOGY LTD

深圳市振欢电子有限公司([www.szzhpower.com](http://www.szzhpower.com))

深圳市祺晨科技有限公司([www.keysuntech.com](http://www.keysuntech.com))

地址:深圳市宝安区福永凤凰第一工业区凤兴巷  
1号景业坊工业园 2栋 8-9楼

电话: +86-755-81461285 传真: +86-755-81461215

TEL: +86- 755-81461285

FAX: +86-755-81461215

ADDRESS: 8-9F, Building 2, Jingyefang Industrial Park, Fengxing Lane  
No.1, Fenghuang First Industrial Zone, Fuyong St., Bao'an District,  
Shenzhen, Guangdong, China 518103

<https://www.szzhpower.com> <https://www.keysuntech.com> E-mail: [power@szzhpower.com](mailto:power@szzhpower.com)