

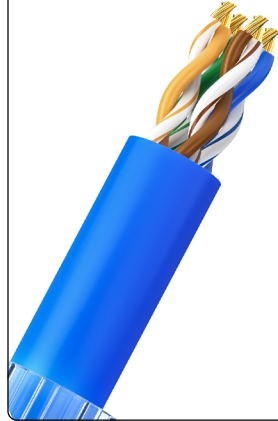
Installation steps

① Thread the nut into the wire



② Strip approx. 40mm of wire cover

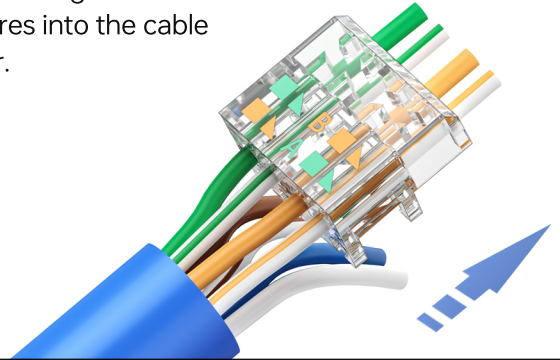
(remove crossbones and aluminum foil layer)



③ After running the cores together, identify them in B-sequence.



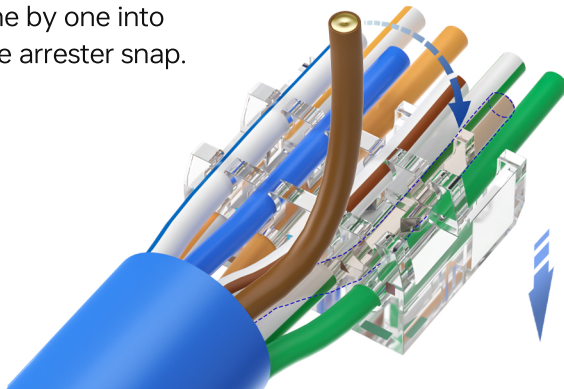
Thread the green/green-white /orange/orange-white color wire cores into the cable arrester.



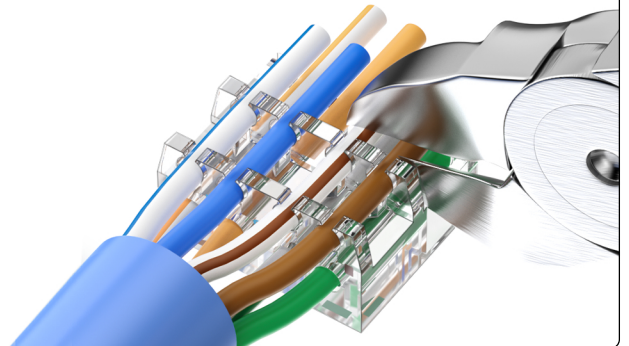
④ Marking according to B-line sequence



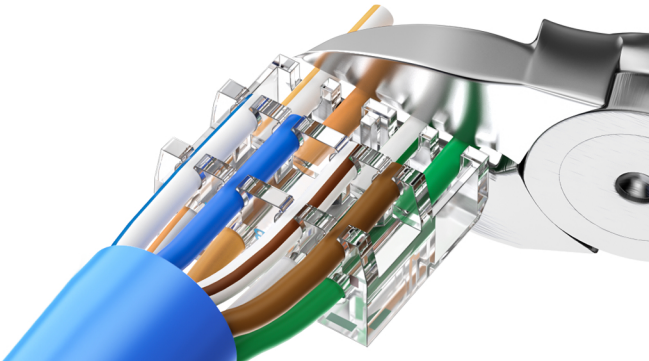
Toggle the brown/brown-white /blue/blue-white color cores one by one into the cable arrester snap.



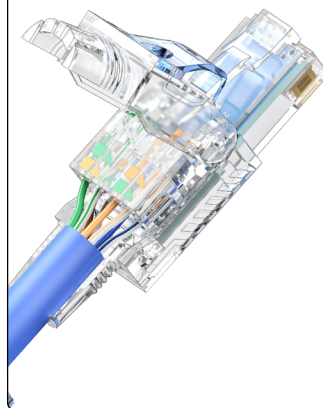
⑤ Cut off the top layer of excess wire cores flush with the slot (not more than 0.2mm recommended).



⑥ Cut off the lower layer of excess wire cores flush with the slot (not more than 0.2mm recommended).



⑦ Insert the cable stripper into the body of the RJ45 Connector.



⑧ Fasten the outer cover, tighten the nut, the installation is complete

