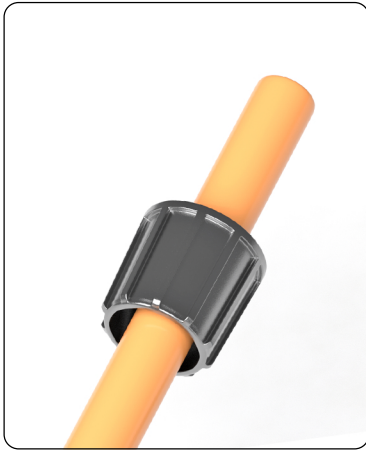
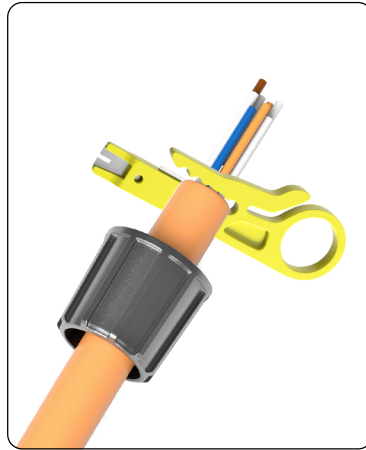


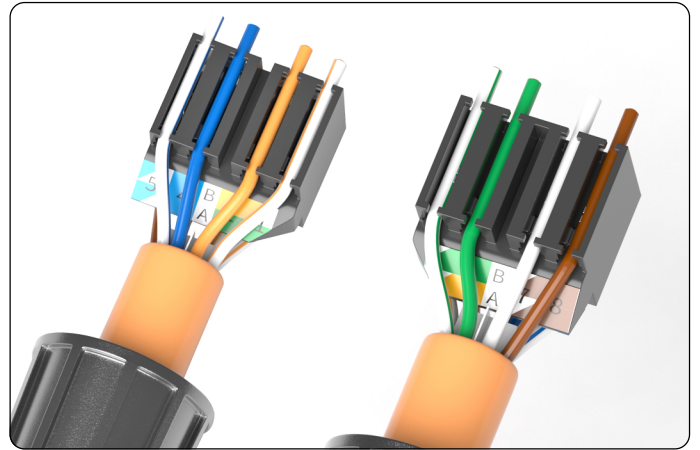
Installation steps



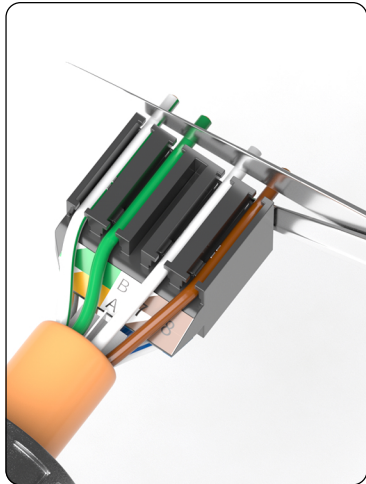
1 Insert the nut into the network cable



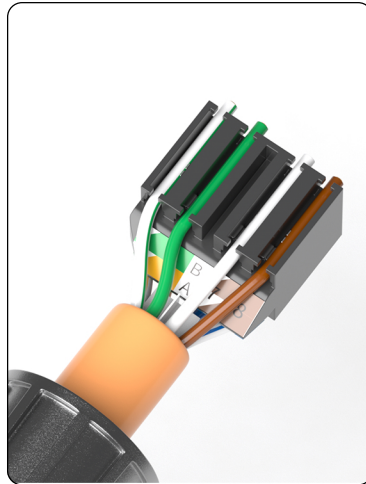
2 Strip the network cable



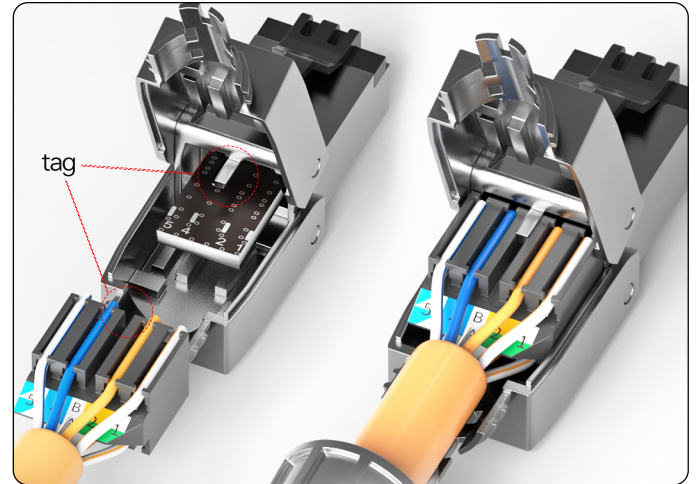
3 Insert cores into slots in order of label B
front left: blue-white, blue, orange, orange-white
back right: green-white, green, brown-white, brown



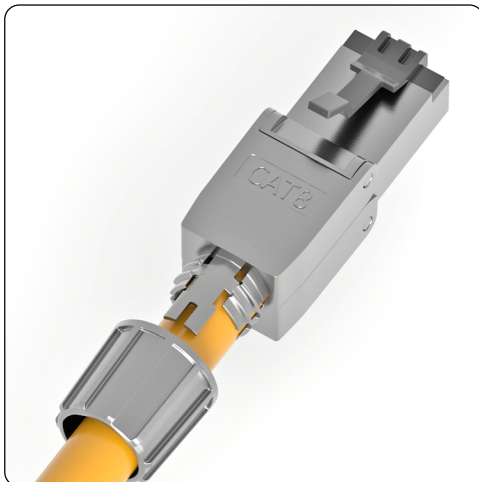
4 Cut along the edges
Redundant core



5 Clip to complete



6 Push the wire setter into the body as marked



7 Close the shell and
press to close



8 Screw on the nuts to
complete the installation