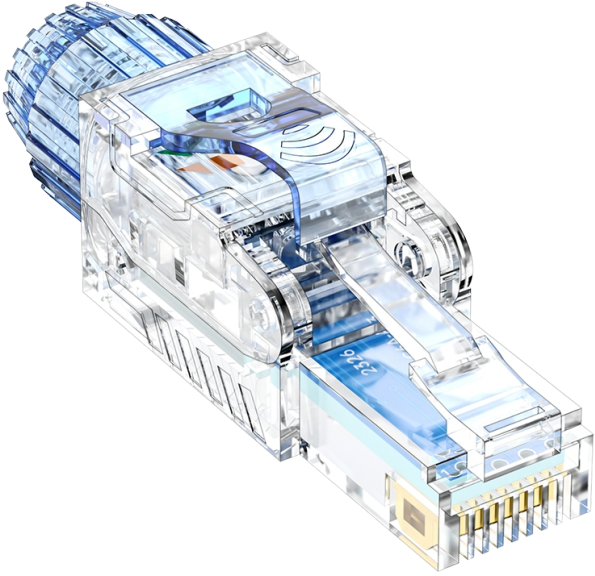


Product User Guide

1.Product Gallery



2.Installation Steps

Prepare an Ethernet cable of any length; CAT5E, CAT6, CAT6A, or similar are all acceptable.

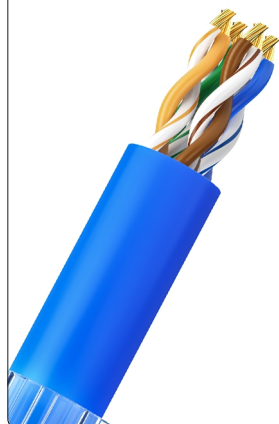
Note: The following installation steps use a CAT6 network cable as an example.

① Thread the nut into the wire



② Strip approx. 40mm of wire cover

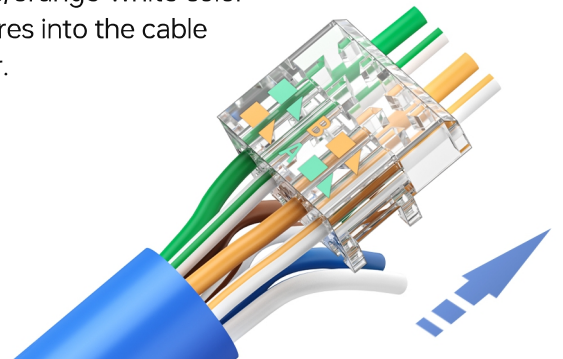
(remove crossbones and aluminum foil layer)



③ After running the cores together, identify them in B-sequence.



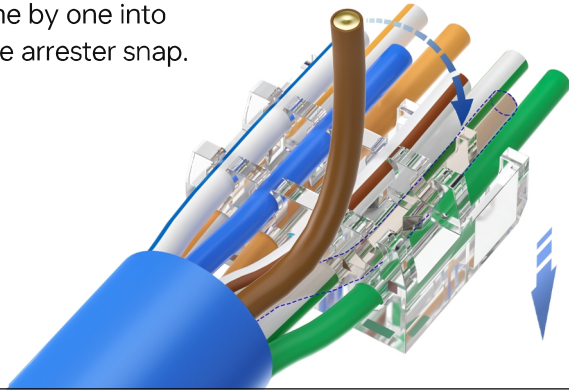
Thread the green/green-white /orange/orange-white color wire cores into the cable arrester.



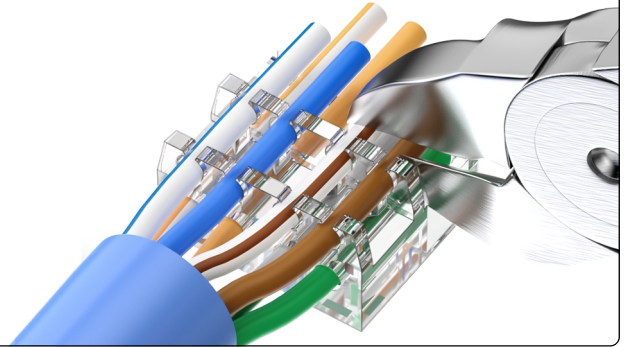
④ Marking according to B-line sequence



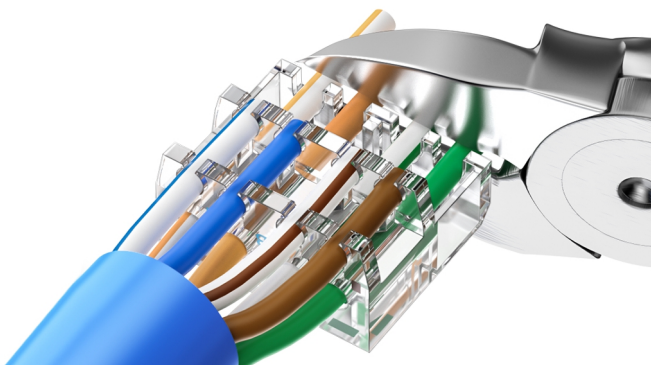
Toggle the brown/brown-white /blue/blue-white color cores one by one into the cable arrester snap.



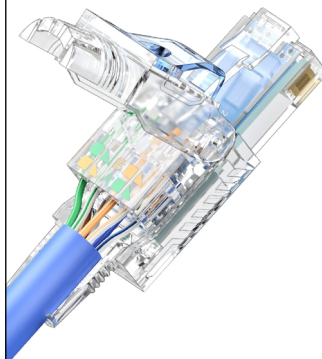
⑤ Cut off the top layer of excess wire cores flush with the slot (not more than 0.2mm recommended).



⑥ Cut off the lower layer of excess wire cores flush with the slot (not more than 0.2mm recommended).



⑦ Insert the cable stripper into the body of the RJ45 Connector.



⑧ Fasten the outer cover, tighten the nut, the installation is complete

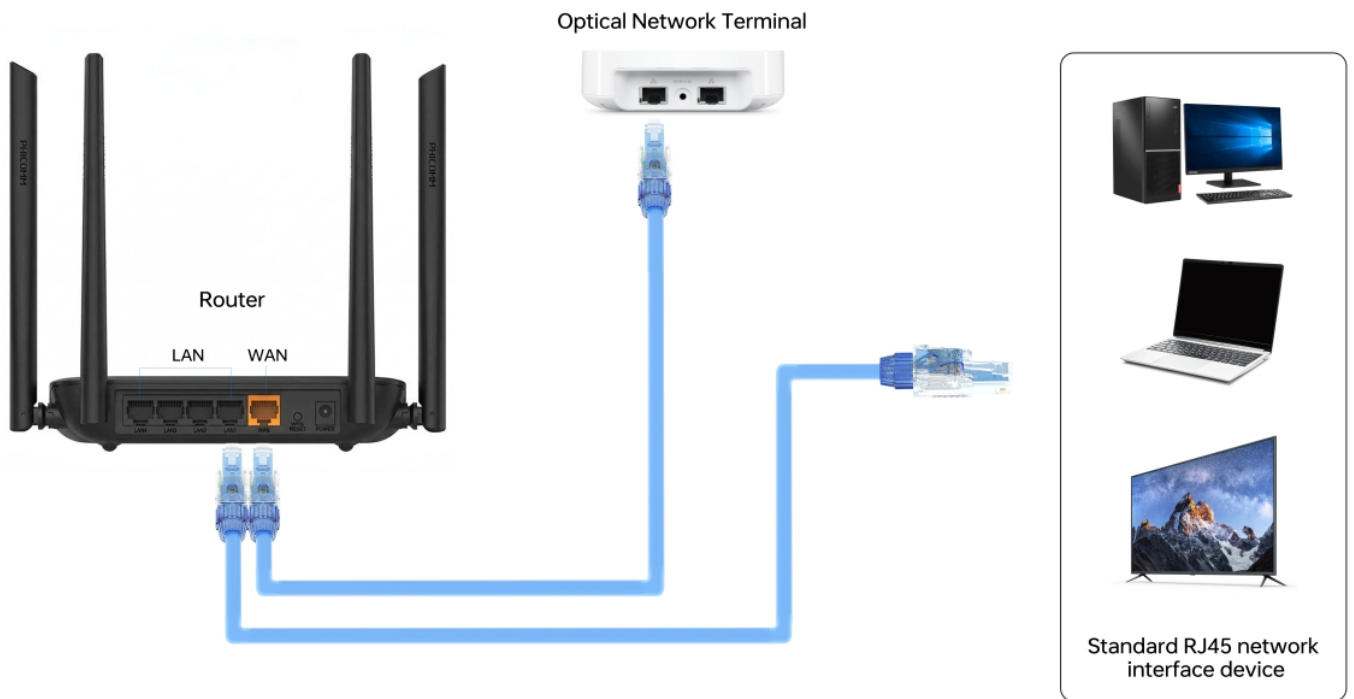


3.Installation Completion Diagram



4. Use Cases

(1). Router Connection Diagram



(2). Other use cases



Home Wiring



Office Cabling



Data Center Cabling