



Digitalization of full arch scanning— MUA scan kit

Solve the scanning distortion of full arch case
| Apply to multiunit abutment restorative full arch case



 **MY Digital Implant**® Hetailai M6 Dental Solution

<https://m6cadcam-dental.com/>

Building A9, Gunangsha Road, Fuyong street,
Bao'an district, Shenzhen, Guangdong Province, China Postal code: 518103



M6 Brand - Introduction

M6 enterprise was established in 2007. As a professional medical equipment manufacturer ,M6 is driven by the mission to build a top quality implant company.By stating the long-lasting faith for the health of all human being ,sustainable growth of a green world,we are committed to research & develop with great effort.With abundance of time, capital ,human-resources invested into M6 implant project and supportive production,M6 obtained CRISC and FDA501(K) .As an international medical company with global vision,an enterprise in oral healthy professional Pled M6 has been exported implant to Mexico , United States ,countries in Europe and Asia. Among those more than 20 countries , M6 builds a trusted image by providing high quality implant , dental material, and general medical product.It is , and it will be, the customers-oriented point of core value, to motivate M6 keening on researching developing, innovating best quality product and services.



INNOVATION for A SMART FUTURE

ONE STOP SHOP FOR DIGITAL IMPLANTOLOGY

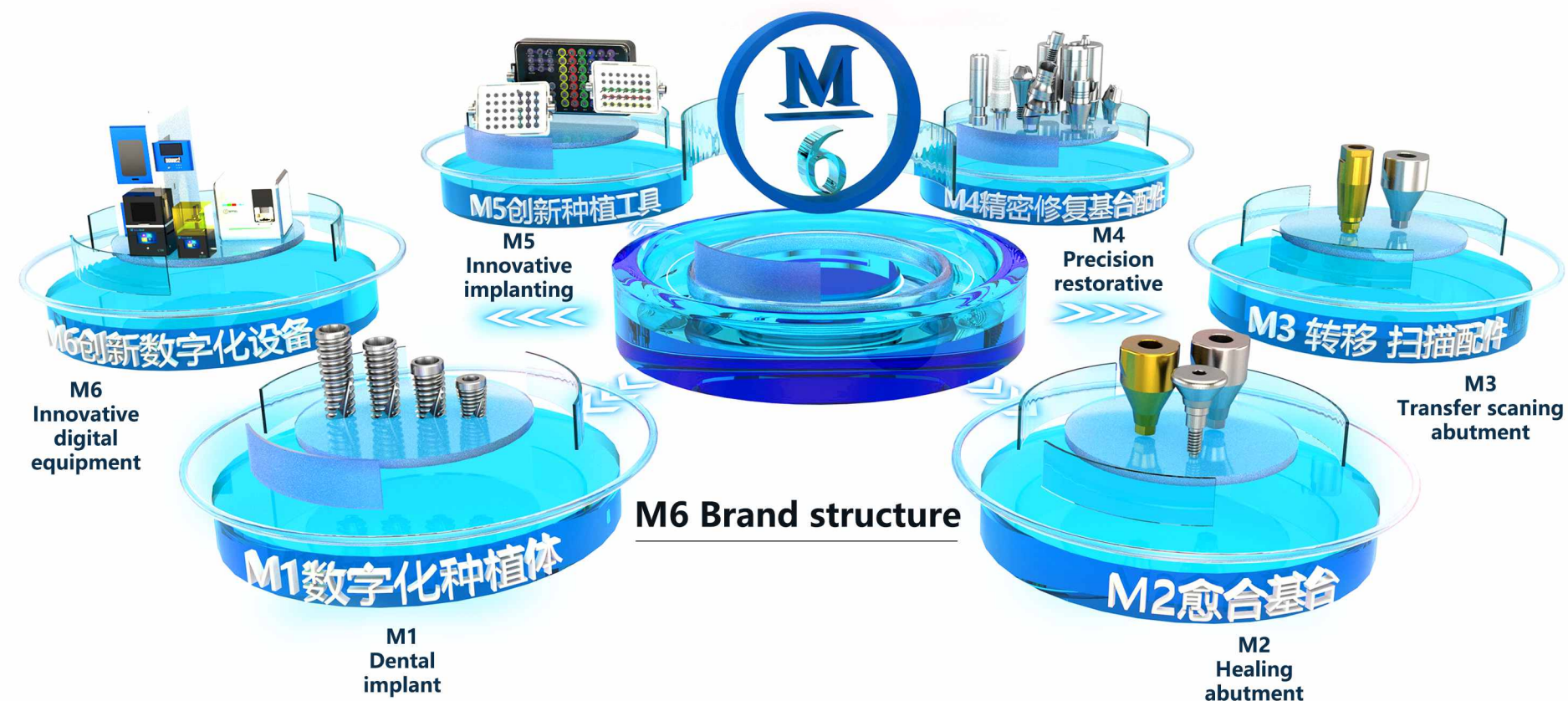
Choose M6

With the perfect implant restoration as the guide, focus on innovative technology, through the clinical technician digital application of knowledge based on equipment/ implant accessories/ professional training/difficult cases to solve/surgical solutions, from the first phase of cavity preparation implants to the upper permanent restoration to provide you with digital oral implants one-stop service.

Core Values

With the core values of innovation, customer achievement, integrity and responsibility, Hetailai people promote new technologies together with industry colleagues and step into the digital future.

INNOVATION FOR A SMART FUTURE



Hetailai Group - Introduction

Founded in 2012 in Shenzhen, the capital of innovation, Hetailai is an innovative dental technology company dedicated to helping dentists solve the complex challenges of restorative dentistry while improving the quality of life of patients around the world. After 13 years of development, the company has formed a digital dentistry group that is now in its infancy. With the core values of innovation, customer satisfaction, integrity and responsibility, we are committed to promoting new technologies with our colleagues in the industry and moving into the digital future together.

Hetailai Dental Digital Industrial Park

covers an area of 7000+ square meters



Comprehensive service



He Tai Lai brand



Research and development of planting accessories



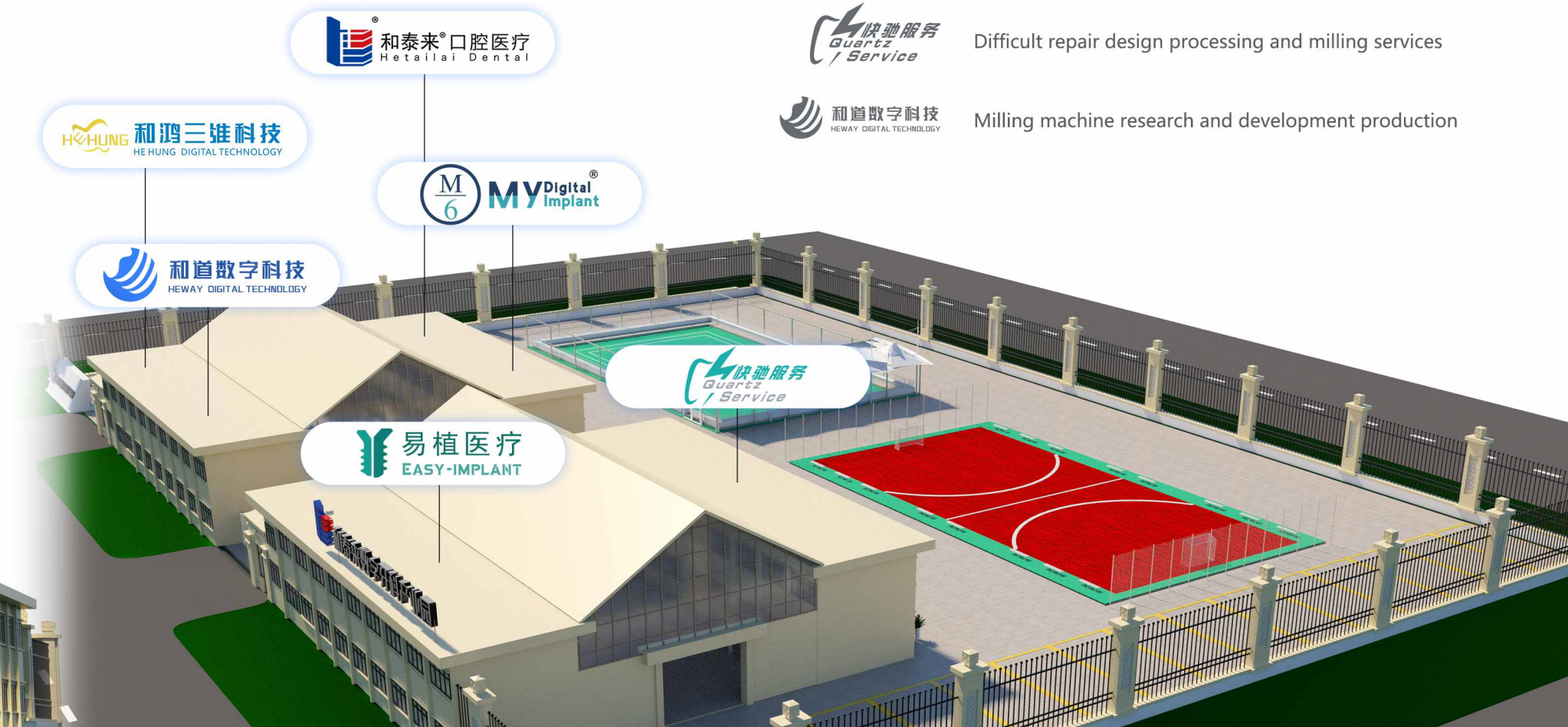
Technical support | 3 D printing | operation program training



Difficult repair design processing and milling services



Milling machine research and development production



The production capacity is 467,000 pieces per month

50 imported automatic production lines in **3** workshops in Shenzhen, Dongguan and South Korea

Quality assurance

Product quality inspection process must pass intelligent full inspection of equipment - semi-automatic inspection equipment - manual inspection, average 20 procedures and quality inspection process, to ensure product accuracy and quality.



和泰来
13
年历程
13 years history of Hetailai dental

2012

Founded in 2012, Hetailai dental has been focusing on the innovative application of digital dental implants for 11 years. We provide one-stop service to the dental labs by "total solution". Our original "3S Digital Implant Service" has supported the start and development of more than 1000 implant restoration businesses.

2016

In 2016, with the participation of several implantologists and restorative dentists, we set up a "Research and Development Center" and a presentation center for digital dentistry. The collaboration of all parties provides high-quality technical support for the growing number of implant

2018

In 2018, we launched the research and development of implant restoration category, focusing on the research and development of AIO system in the field of implant restoration segment to fully carry out the licensing of AIO system. In the same year, we invested in the research and development of 3D printers and materials, and launched a variety of complex implant solutions.

2019

In 2019, we obtained several CFDA licenses for implant accessories. Completed M6 brand system implants and peripheral accessories, and DEN-TOP brand successfully opened overseas market.

2017

In 2017, our high quality products and complete solutions won the favor of foreign partners to expand our products to the United States, Australia, Russia, etc. on an OEM service.

2020

In 2020, we built a digital industrial park to fully realize the integrated industry chain from equipment production to implant restoration. And the establishment of the implant milling machine division will not forget the original intention to focus on the innovative application of digital dental implants, and constantly overcome complex problems to make implantation more simple.

2015

In 2015, we set up a 24-hour digital service center to provide design and processing services for dental labs, and our 24-hour commitment to high quality and fast delivery has been recognized by our European and American customers.

2021

In 2021, in order to solve technical problems, we do training 200+ times, oriented to perfect implant restoration, dedicated to the complex challenges of dental restoration, the professional technical team composed of professors from Taiwan provides free training public courses on digital technical knowledge, equipment operation, software design, etc. The first 10 cooperative tour exhibitions with Shining 3D were held in Hangzhou, Quanzhou, Fuzhou, Changsha, Shijiazhuang, Taiyuan, Chengdu, Chongqing, Luoyang and Xi'an. The tour courses are digital-oriented combined with clinical applications, case studies, analysis of difficult cases, and seminars on new technology solutions for colleagues to exchange and share, and make progress together to promote the progressive development of the industry.

2022

In 2022, we started a number of CFDA Class III certifications, focusing on research and development of innovative implant restorations, investing more manpower and equipment for research and development, and setting up several laboratories and corresponding instruments for new product testing. The capital investment more than 10 million, 12 imported fully automatic production equipment, now Shenzhen / Korea / Dongguan a total of 40 fully automatic production line, the monthly production capacity of 370,000 pieces.

2023

In 2023, we Hetailai M6 were the first company in China to get the Class III medical devices registration certificate for Scannable Healing Abutment, Customized Abutment and Screws, and Cutting Abutment Blank and Screws. At the same time, we obtained the certificate of "High-tech Enterprise". we add 5 imported fully automatic production equipments, and own 50 fully automatic production lines for now, the monthly production capacity reaches 467,000 pcs.

2024

In 2024, Hetailai will develop a new multi-unit scanning rod toolbox to open a new era of edentulous oral scanning, bravely climb a new peak of dental technology, and solve the pain points of edentulous single-form oral scanning distortion in the industry. At the same time, it ushered in the good news that three types of registration certificates [personalized abutments and screws] were approved. In 2024, Hetailai Dental Digital Industrial Park will expand its use area to 7,000+ square meters, and in terms of hardware facilities, it will invest heavily in imported equipment such as vacuum titanium nitride gold plating machine, five-axis cutting machine, anodizing equipment, automatic full inspection equipment, automatic packaging and other advanced equipment and instruments, laying a solid foundation for innovative R&D and production, and moving forward at full speed towards the future of dental digitalization.

No more challenge of scanning in full arch case

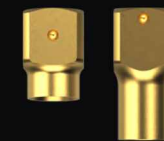
Sterilization Box

Apply to multiunit abutment restorative full arch case



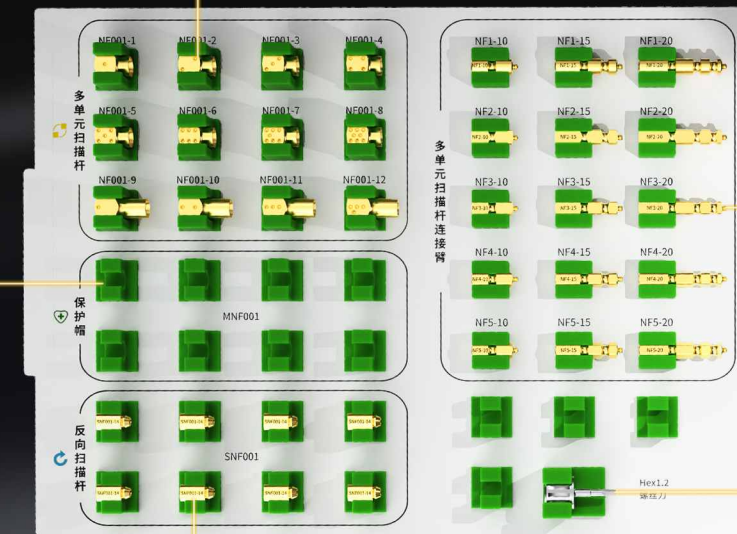
Maxillary tray
Record jaws relationship

MUA healing cap
Protect the platform of MUA and assist the scanning of occlusion



Scan body

8pcs scan bodies with short gingival height
4pcs scan bodies with long gingival height
Connect to MUA



Connect-pin
According to space between implants and identified notches, choose the right scan bodies



Final screwdriver



Opposite scan body

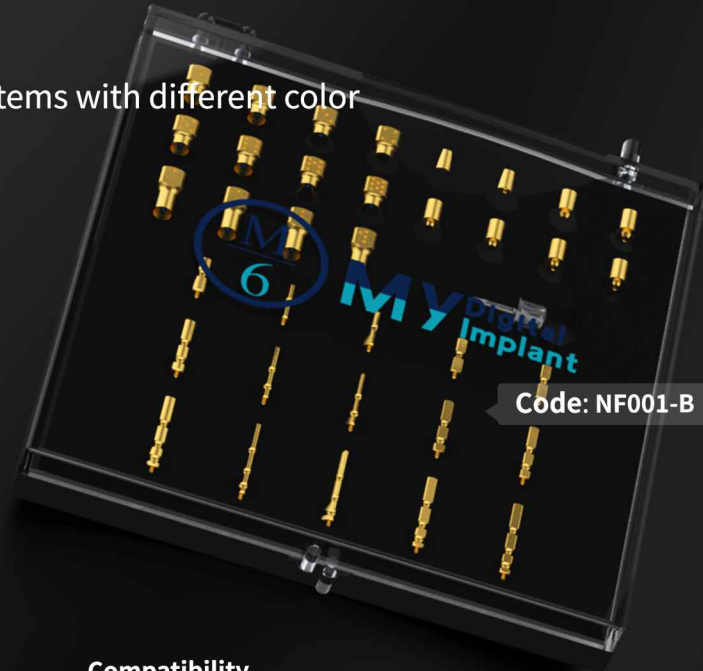
Extra-oral scanning Save patients' time
Release patient's pain of mouth opening
Improve treatment experience

Multi-unit abutment restorative case
Apply to full arch case
Loss multi-unit tooth
Immediate restoration case

Simple Box

Recognize different systems with different color

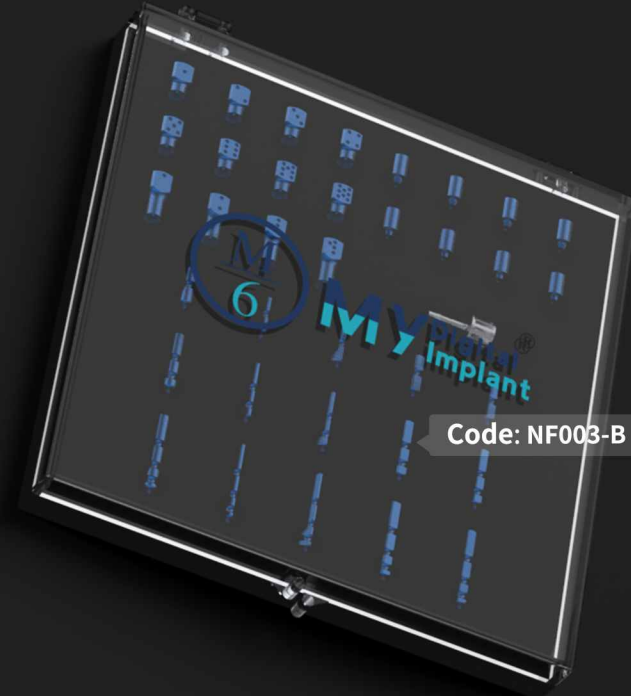
Multiple compatibility



Code: NF001-B

Compatibility

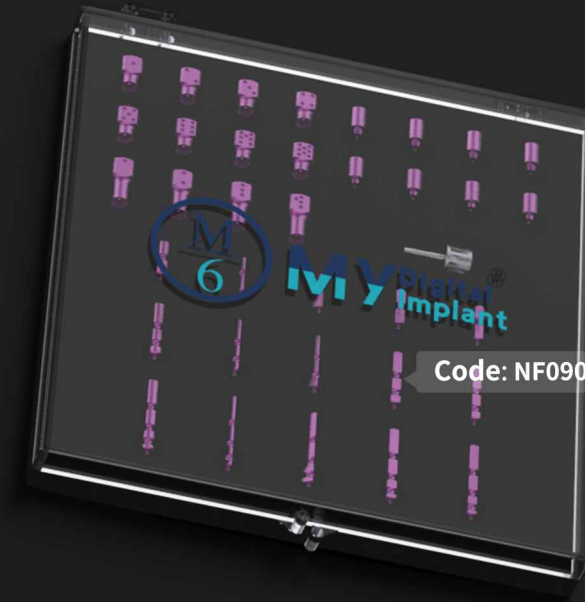
Osstem, Noble, Straumann, ICX, Adin, B&B, C-tech, Neobiotech, Zuga, Cansun



Code: NF003-B

Compatibility

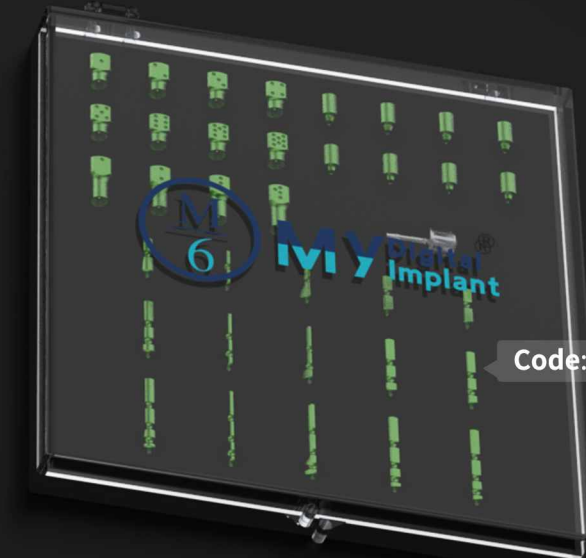
Dentium, Zimmer



Code: NF090-B

Compatibility

MEGAGEN



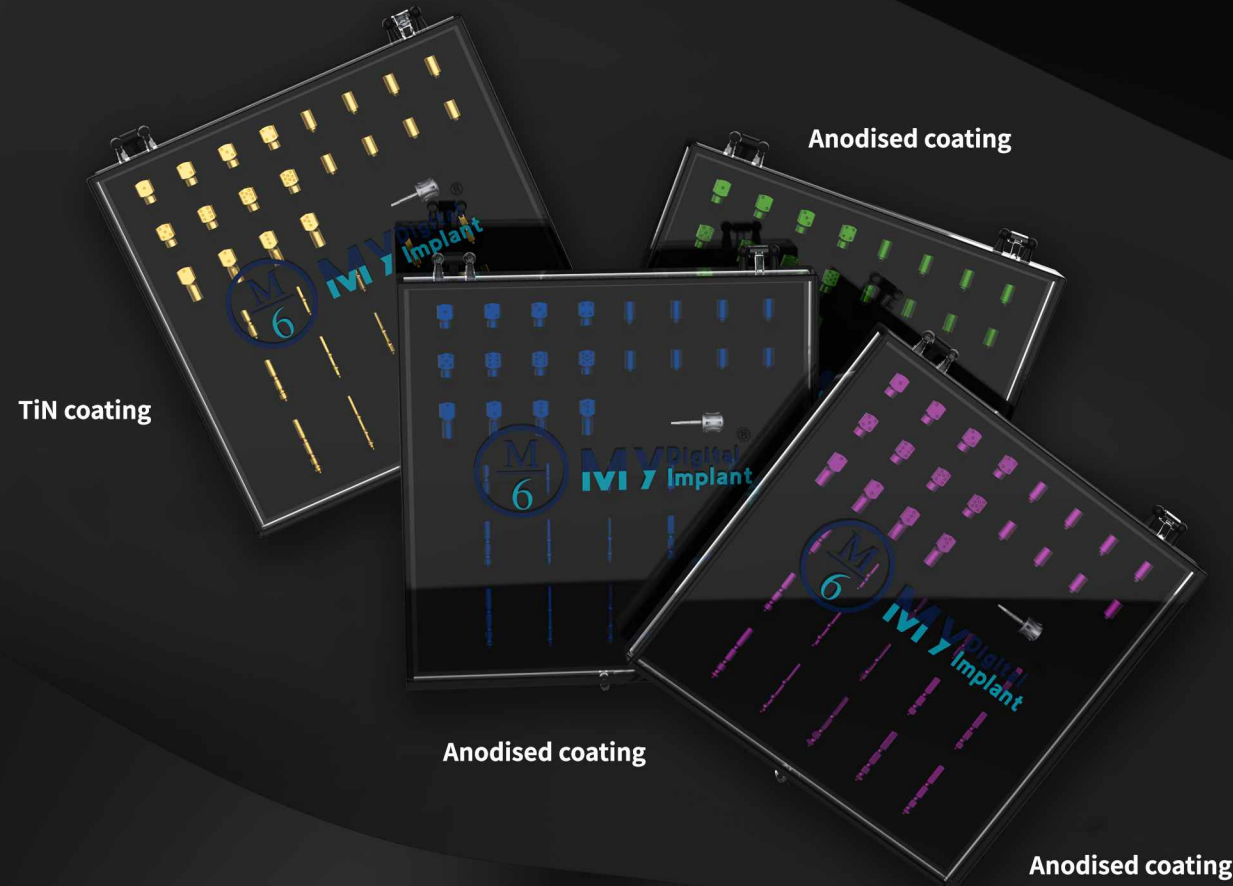
Code: NF033UF-B

Compatibility

DIO UF

TiN coating+ Anodised coating

Reduce probability of peri-abutmentitis



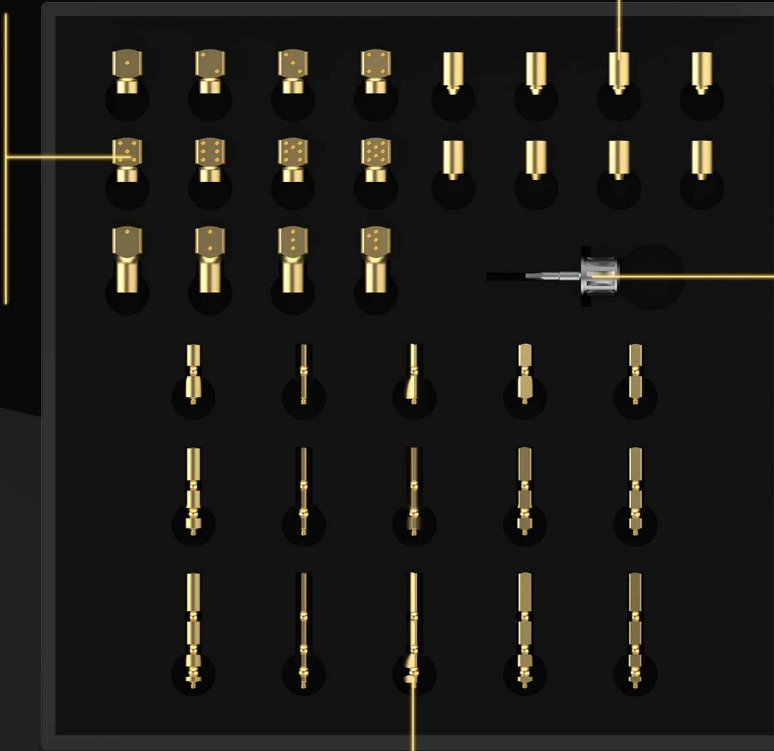
Scan body

8pcs scan bodies with short gingival height
4pcs scan bodies with long gingival height
Connect to MUA



Opposite scan body

Extra-oral scanning Save patients' time
Release patient's pain of mouth opening
Improve treatment experience



Final screwdriver



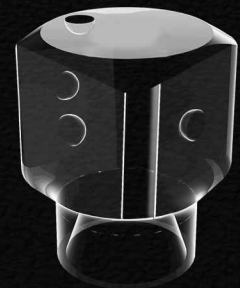
Connect-pin

According to space between implants and identified notches,
choose the right scan bodies

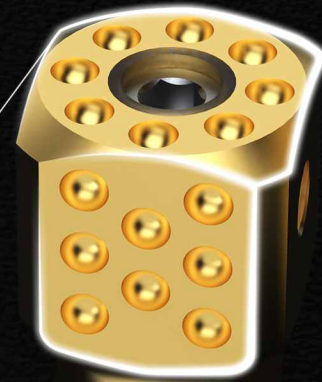
MUA scan body with 5 designs

Solve the scanning distortion of full arch case

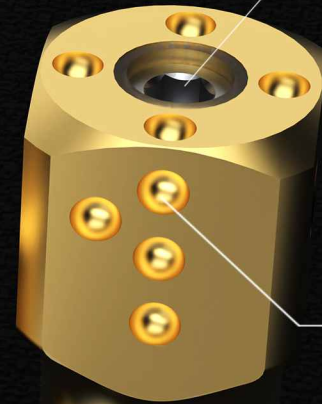
Could be used in different restorative stage



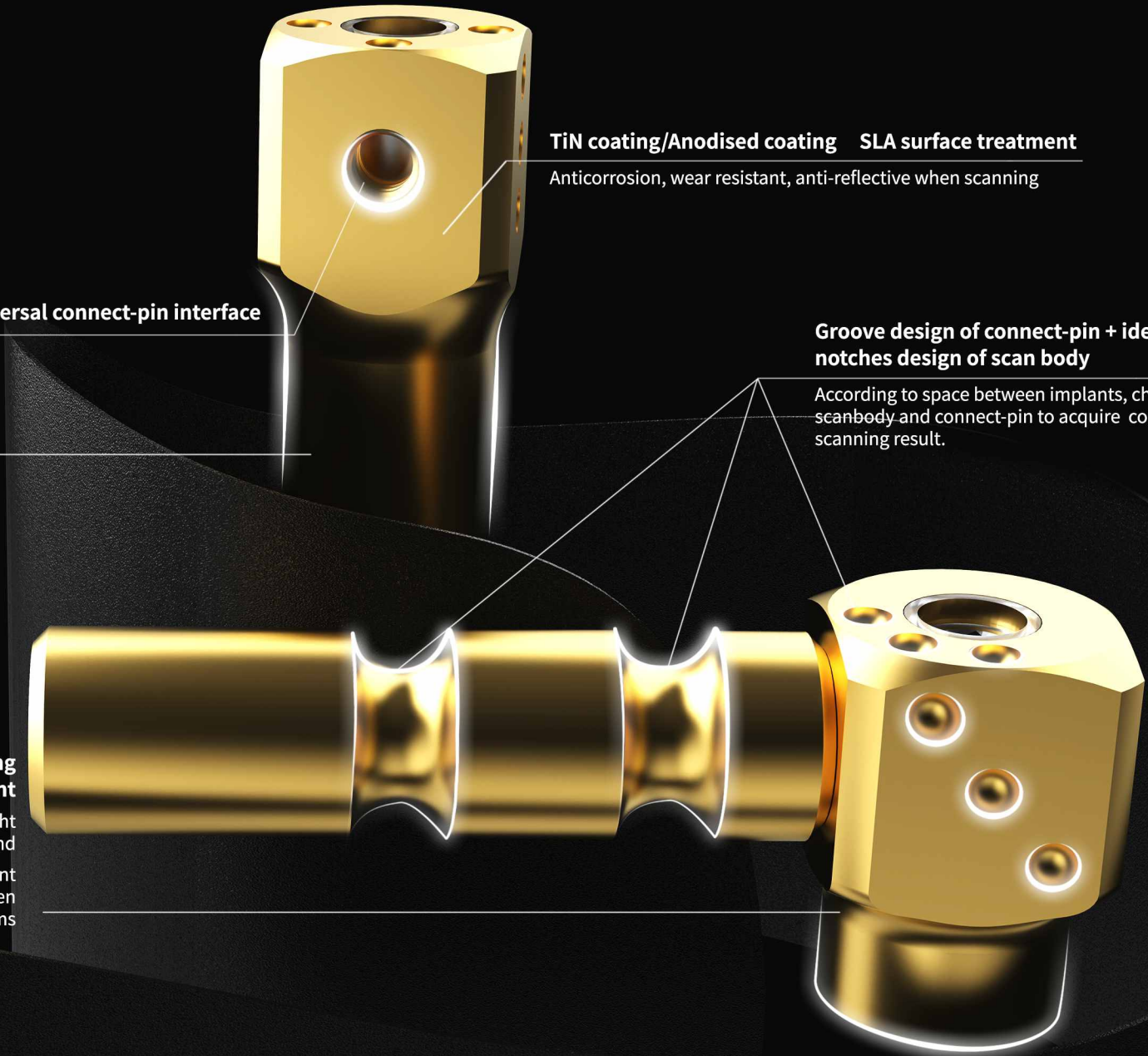
high-effective scanning
Big Identified area



Different identified feature notches
Increase scanning efficiency and accuracy
Determine position quickly and add scan



Fixed screw anti-falling
Increase safety



TiN coating/Anodised coating SLA surface treatment
Anticorrosion, wear resistant, anti-reflective when scanning

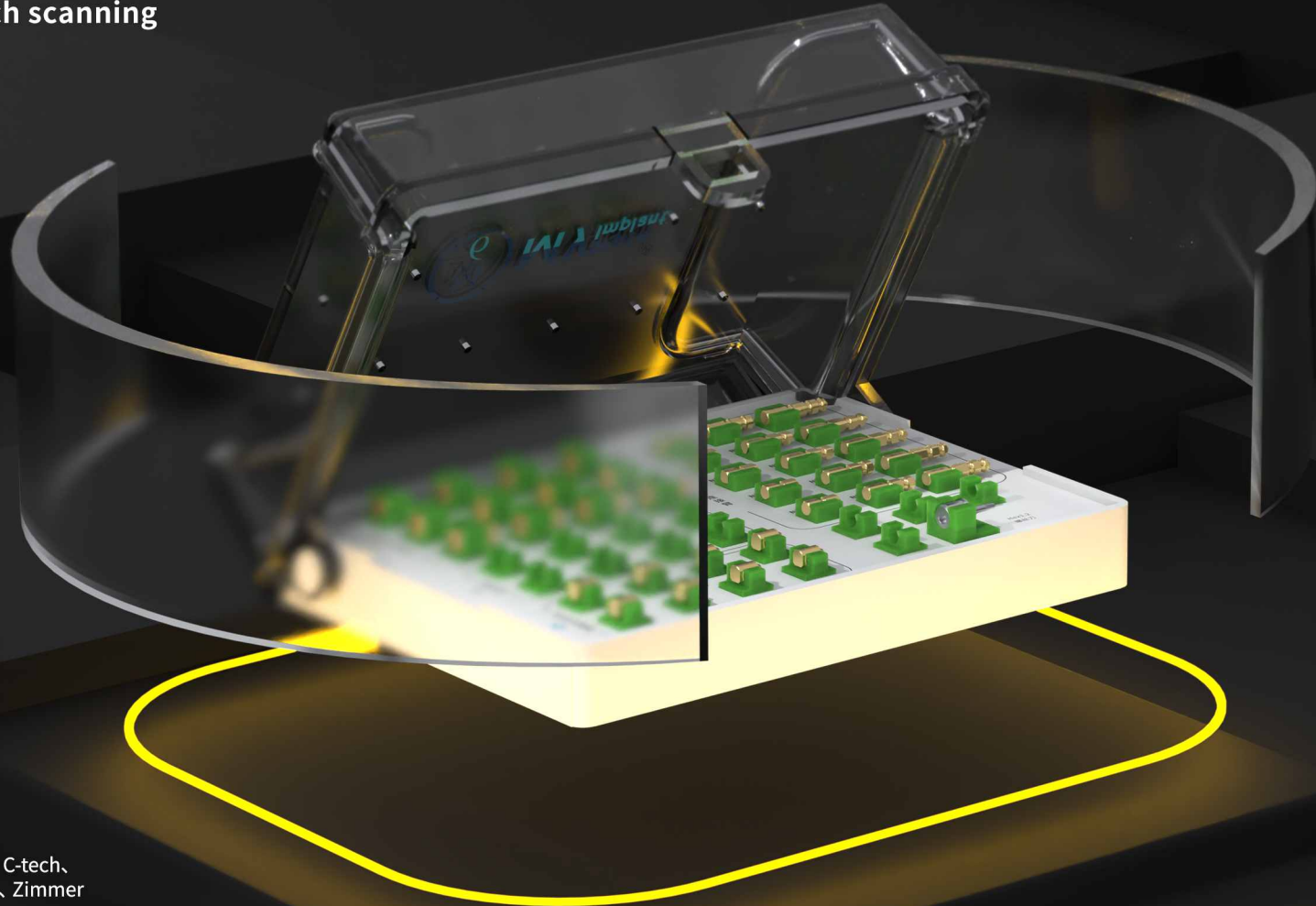
Universal connect-pin interface

Groove design of connect-pin + identified notches design of scan body
According to space between implants, choose right scanbody and connect-pin to acquire continuous scanning result.

3mm/7mm short and long gingival height
• Meet different gingival height case demand
• solve the problem: Inconvenient placement on red and swollen gums

MUA scan kit
Digitalization of full arch scanning

could do autoclave sterilisation
 at high frequency and high
 temperature!



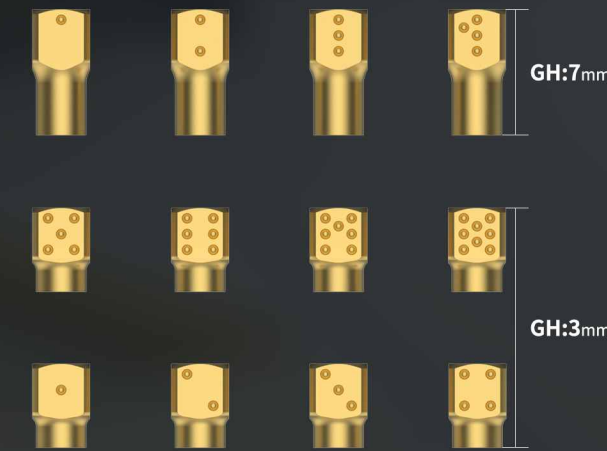
Compatibility

Osstem, Noble, ITI, ICX, Adin, B&B, C-tech,
 Neobiotech, Zuga, Cansun, Dentium, Zimmer

More implant system will be available soon

180 different combinations

Zero-repeat of in different feature area
 Apply to MUA restorative full arch case



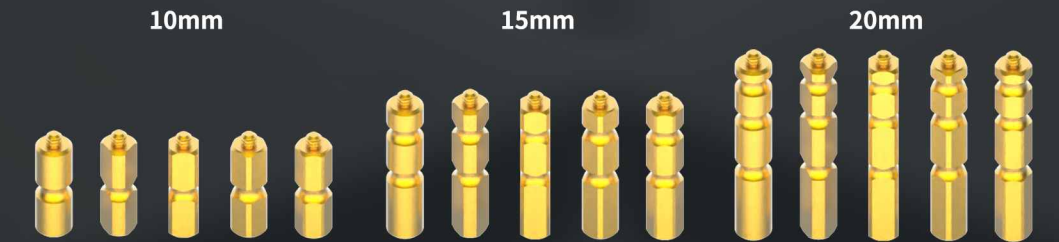
12 types scan bodies

Different identified notches
 avoid scanning distortion
 when scan similar structure.



connect-pins in 5 different shapes

With the identified different notch designed nodal, scanning
 continuity could be acquired.



connect-pin in 3 different lengths

Choose the right length pin according to the distance between implants.

MUA scan body steps to place
 Easy to install
 Release patient's pain of mouth opening

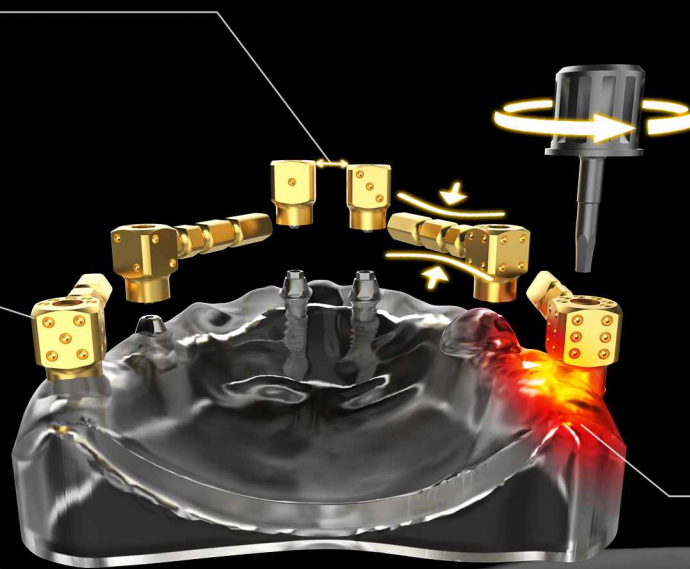


100% apply to MUA restorative case

1
 Fix connect-pin with scan body

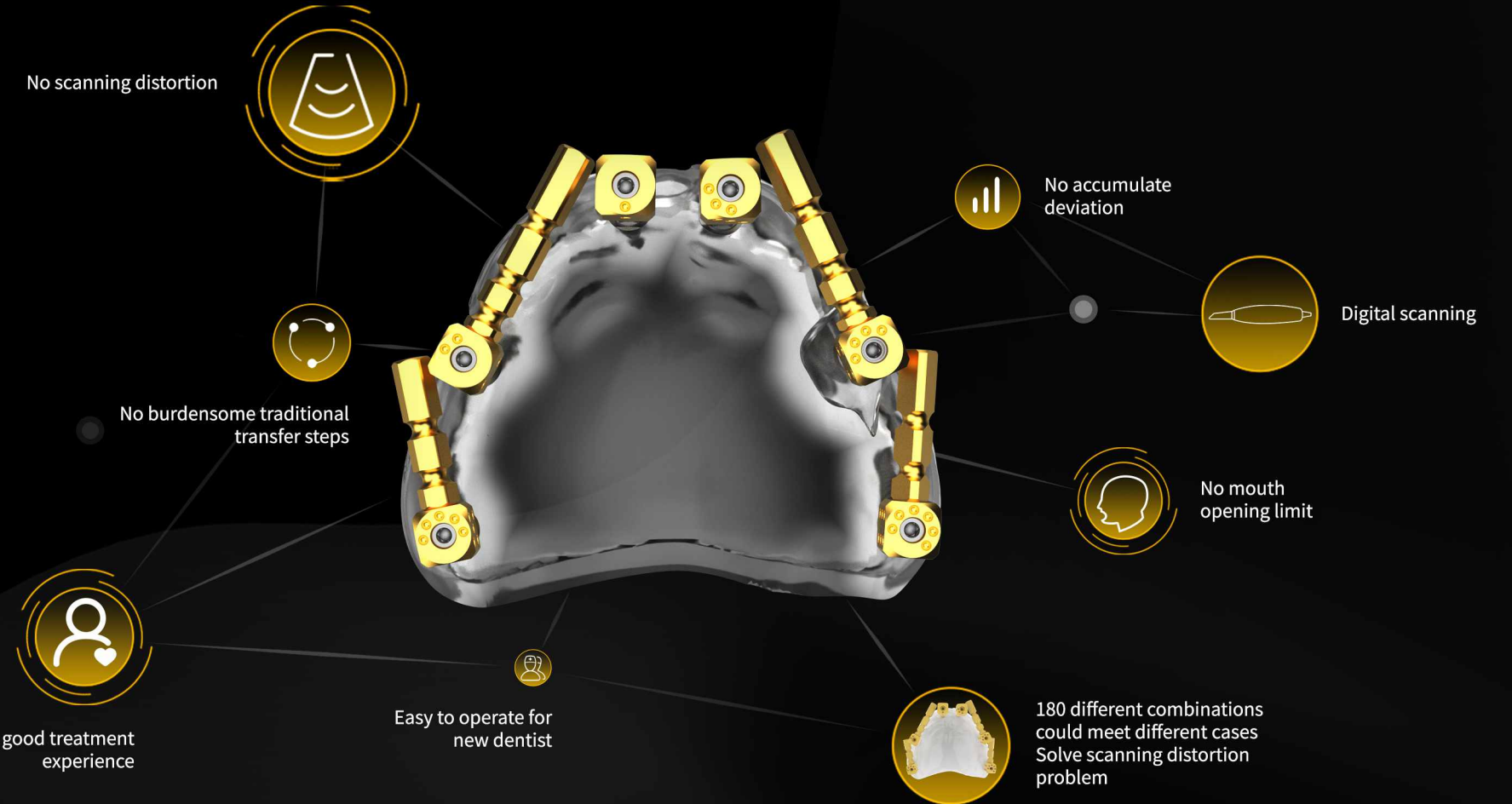


Space between implants <math>< 5\text{mm}</math>:
 no need connect-pin



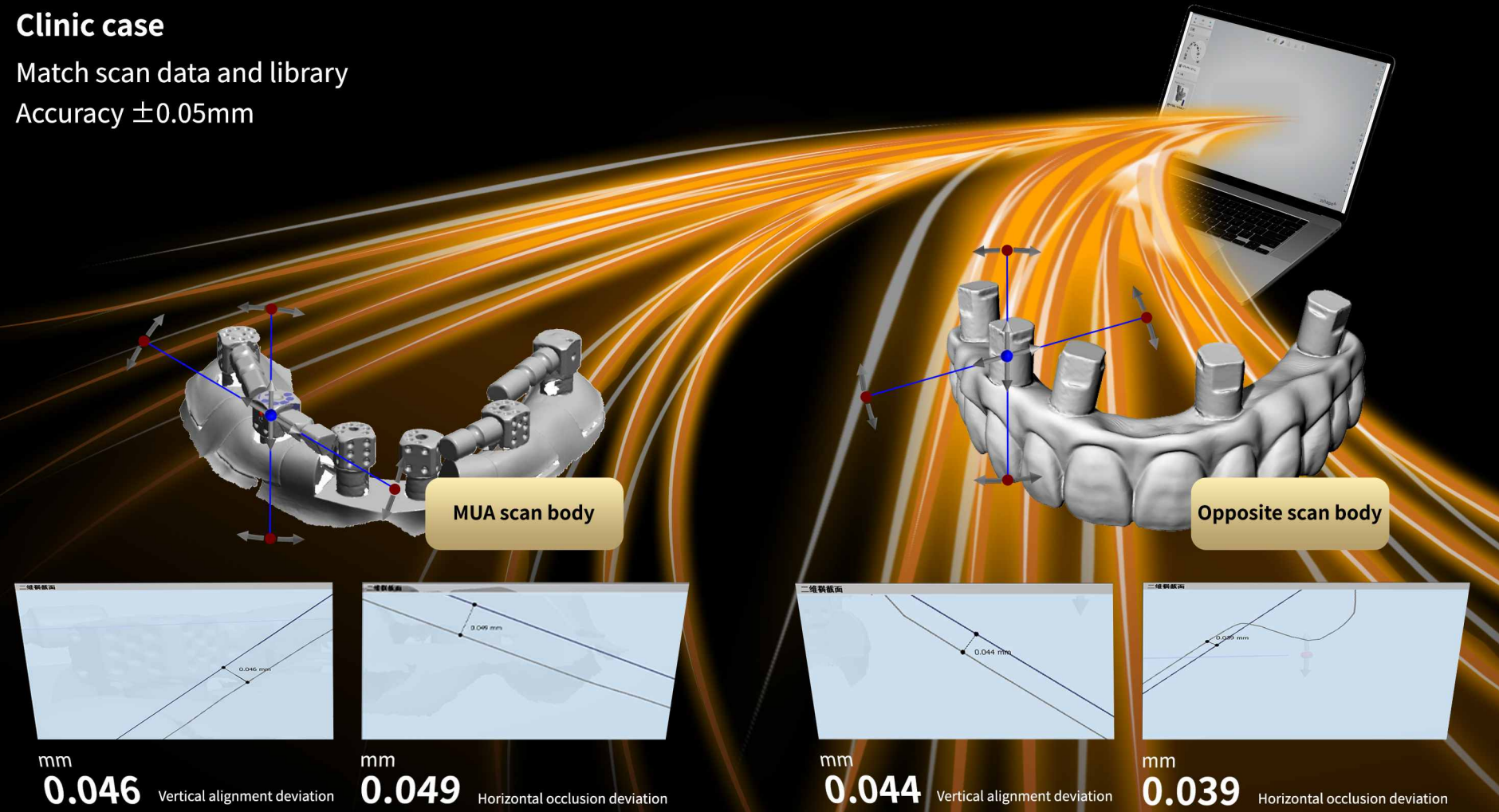
2
Fix scan body to MUA with final screwdriver
 We suggest you to place MUA scanbody to posterior first, and anterior later
 Release patient's pain, easy for dentist to place into oral

Solve the placement problem of immediate restoration
 Long and short different gh scanbody solve the placement problem on to red and swollen gums



Clinic case

Match scan data and library
Accuracy $\pm 0.05\text{mm}$



Opposite scan body

Opposite scanbody is used to acquire implant position extra-oral (passive in-position use)
Save patient's time
Improve treatment experience

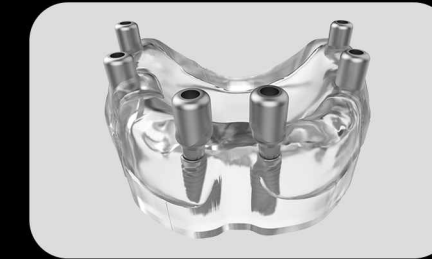
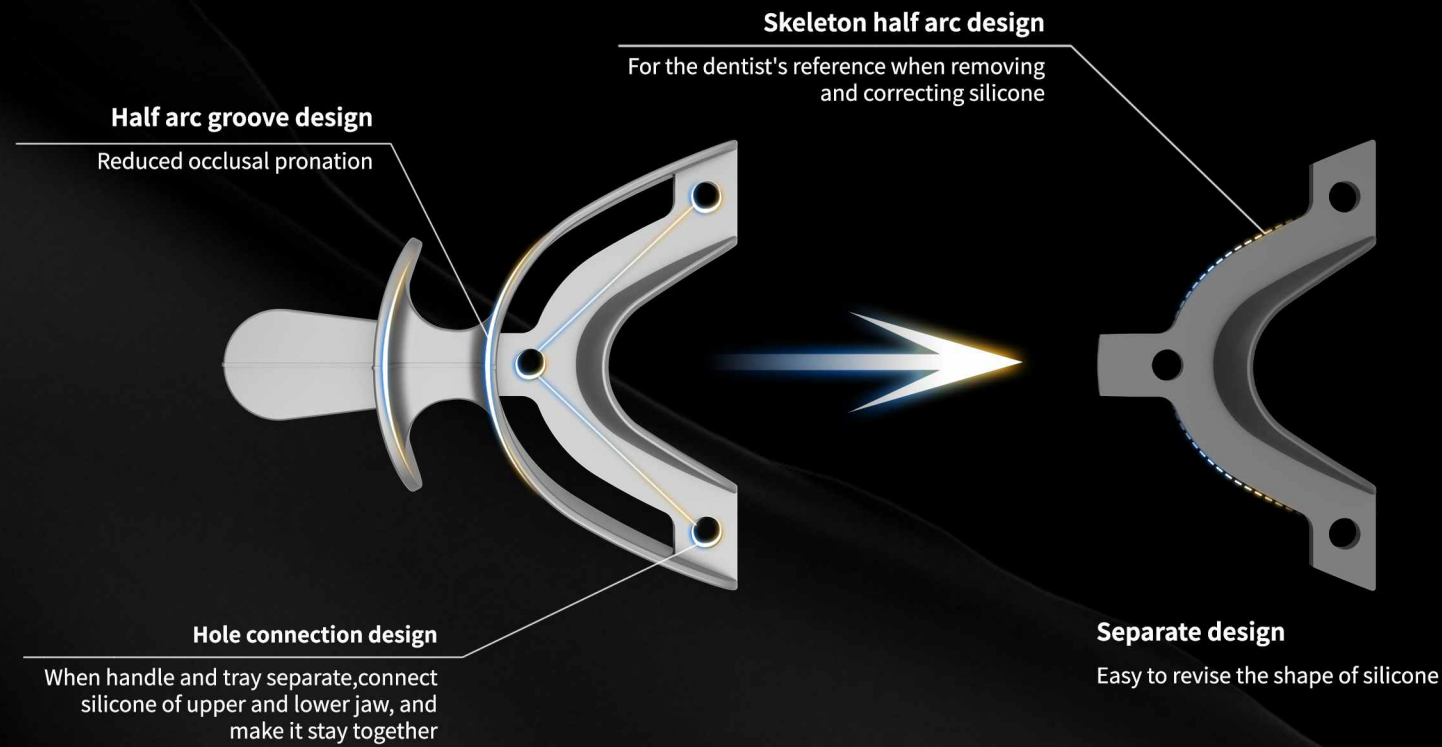


ACCURATE SCANNING

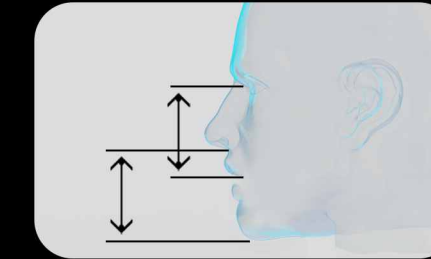
Maxillary tray

Record jaws relationship

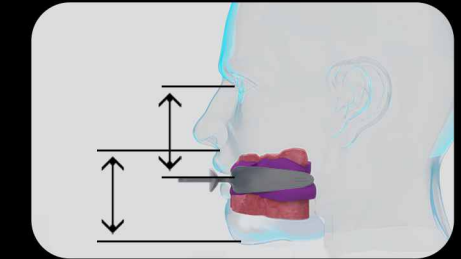
Maxillary tray operation steps



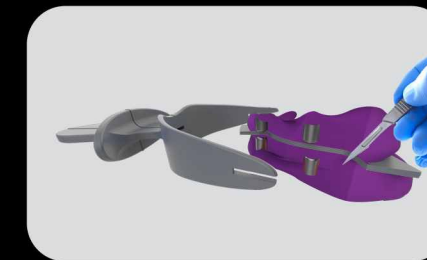
1. Place healing cap and scan soft tissue



2. Determine vertical distance



3. Using a maxillary tray and silicone (heavy body/light body) to record the jaw relationship, the patient is instructed to bite slowly to the target distance.



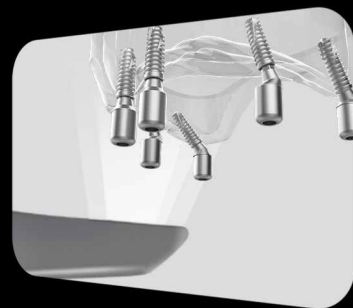
4. Wait for the silicone to cure and then remove the tray and trim to expose 1/2 of the protective cap.



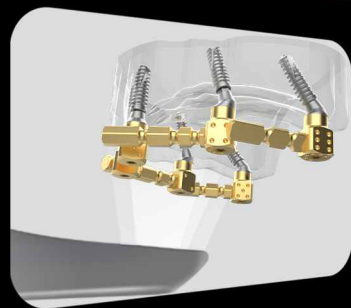
5. After jaw record reset, scan occlusion relationship to do occlusion match

Steps of Non-immediate restoration stage II transfer case

Accurate scanning Easy workflow No burdensome traditional transfer steps



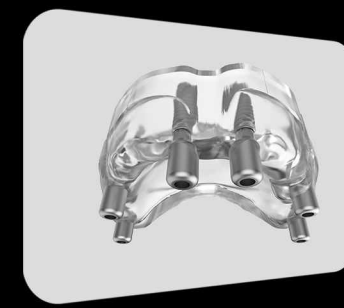
1. Place protective cap
Scan soft tissue



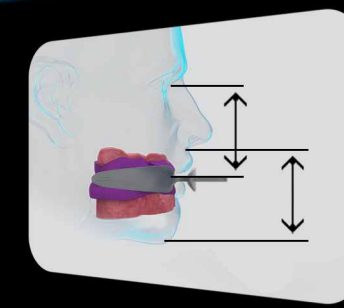
2. Remove cap, place MUA scanbody to MUA and scan (the cap could be used in active and passive in-position)



3. Scan opposite jaw



4. Place protective cap



5. After determine the vertical distance, use maxillary tray and protective cap to record jaw relationship, and scan occlusion



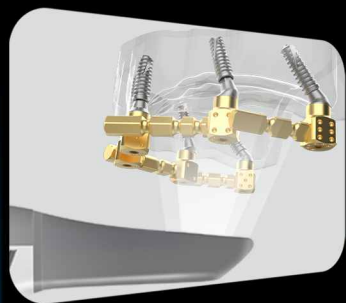
6. Produce and place permanent restoration

MUA scanbody-application

Immediate and permanent restoration transfer workflow



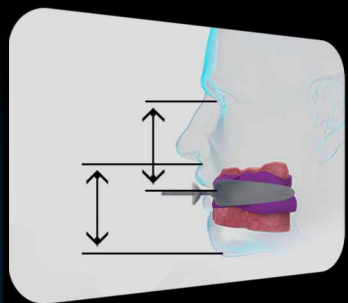
1. Place protective cap
Scan soft tissue



2. Remove cap, place MUA scanbody to MUA and scan (the cap could be used in active and passive in-position)



3. Scan opposite jaw



4. After determine the vertical distance, use maxillary tray and protective cap to record jaw relationship, and scan occlusion



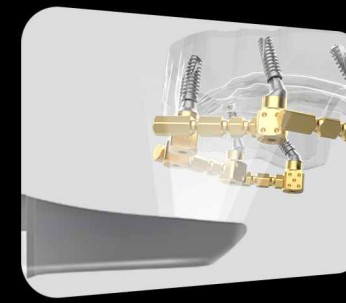
5. Produce and place temporary restoration



6. Remove temporary restoration



7. Scan the soft tissue which is with MUA



8. Place and scan MUA scan body, and also scan the opposite jaw (apply to active and passive in-position)



9. Produce and place permanent restoration

Immediate restoration stage

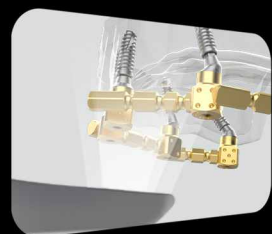
Permanent restoration stage

Opposite scanbody-application

Immediate and permanent restoration transfer workflow



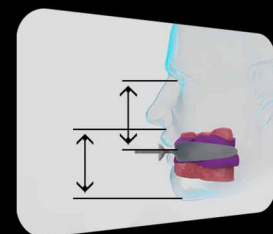
1. Place protective cap
Scan soft tissue



2. Remove cap, place MUA scanbody to MUA and scan (the cap could be used in active and passive in-position)



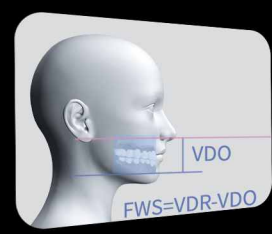
3. Scan opposite jaw



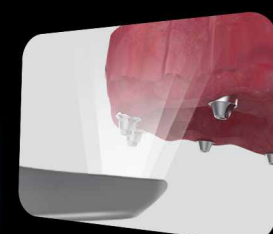
4. After determine the vertical distance, use maxillary tray and protective cap to record jaw relationship, and scan occlusion



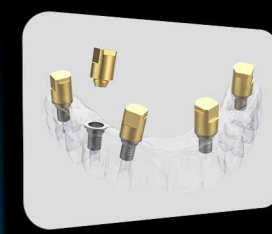
5. Produce and place temporary restoration



6. After determine the jaws relationship of temporary restoration, remove the MUA screw and confirm the temporary restoration is passive in-position



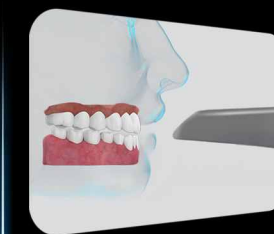
7. Remove temp restoration, scan soft tissue with MUA



8. place opposite scanbody on temporary restoration



9. scan the opposite scanbody (apply to passive fit)



10. Place temp restoration back intra-oral, and scan the upper, lower jaws and occlusion



11. Produce and place permanent restoration

Immediate restoration stage

Permanent restoration stage



$\frac{M}{6}$ **MY** Digital[®]
Implant