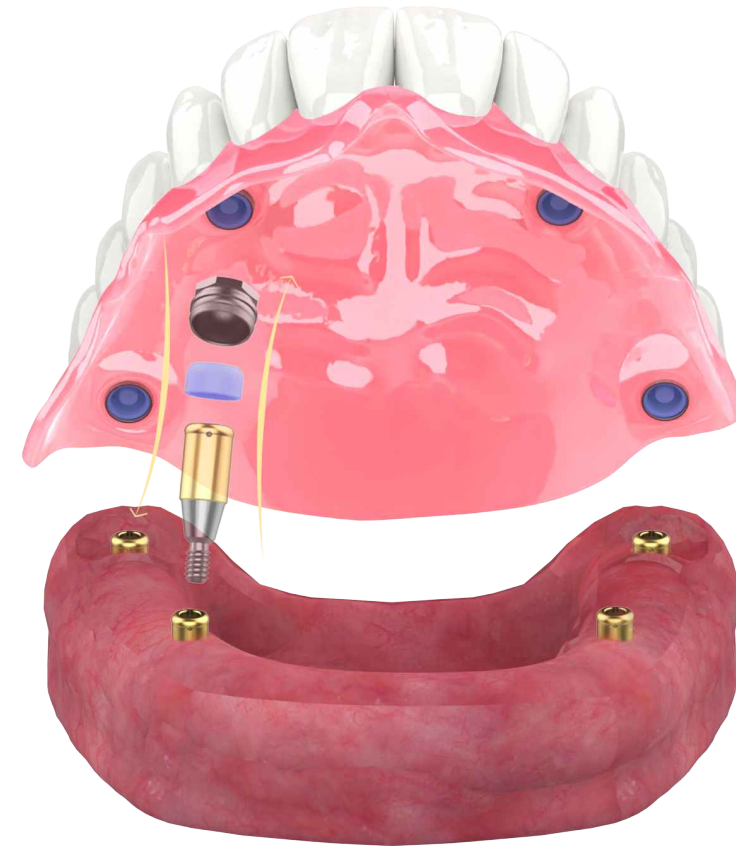




Locator abutment—
Reduce treatment risk

Strong Position Force |
middle-aged and elderly edentulous



WeChat



WhatsApp



+8619128063813

lisalee@szhetailai.com

<https://m6cadcam-dental.com/>

Building A9, Gunangsha Road, Fuyong street, Bao'an district, Shenzhen, Guangdong Province, China. Postal . code: 518103



M6 Brand - Introduction

M6 enterprise was established in 2007. As a professional medical equipment manufacturer ,M6 is driven by the mission to build a top quality implant company.By stating the long-lasting faith for the health of all human being ,sustainable growth of a green world,we are committed to research & develop with great effort.With abundance of time, capital ,human-resources invested into M6 implant project and supportive production,M6 obtained CRISC and FDA501(K) .As an international medical company with global vision,an enterprise in oral healthy professional Pled M6 has been exported implant to Mexico , United States ,countries in Europe and Asia. Among those more than 20 countries , M6 builds a trusted image by providing high quality implant , dental material, and general medical product.It is , and it will be, the customers-oriented point of core value, to motivate M6 keening on researching developing, innovating best quality product and services.



INNOVATION for A SMART FUTURE

ONE STOP SHOP FOR DIGITAL IMPLANTOLOGY

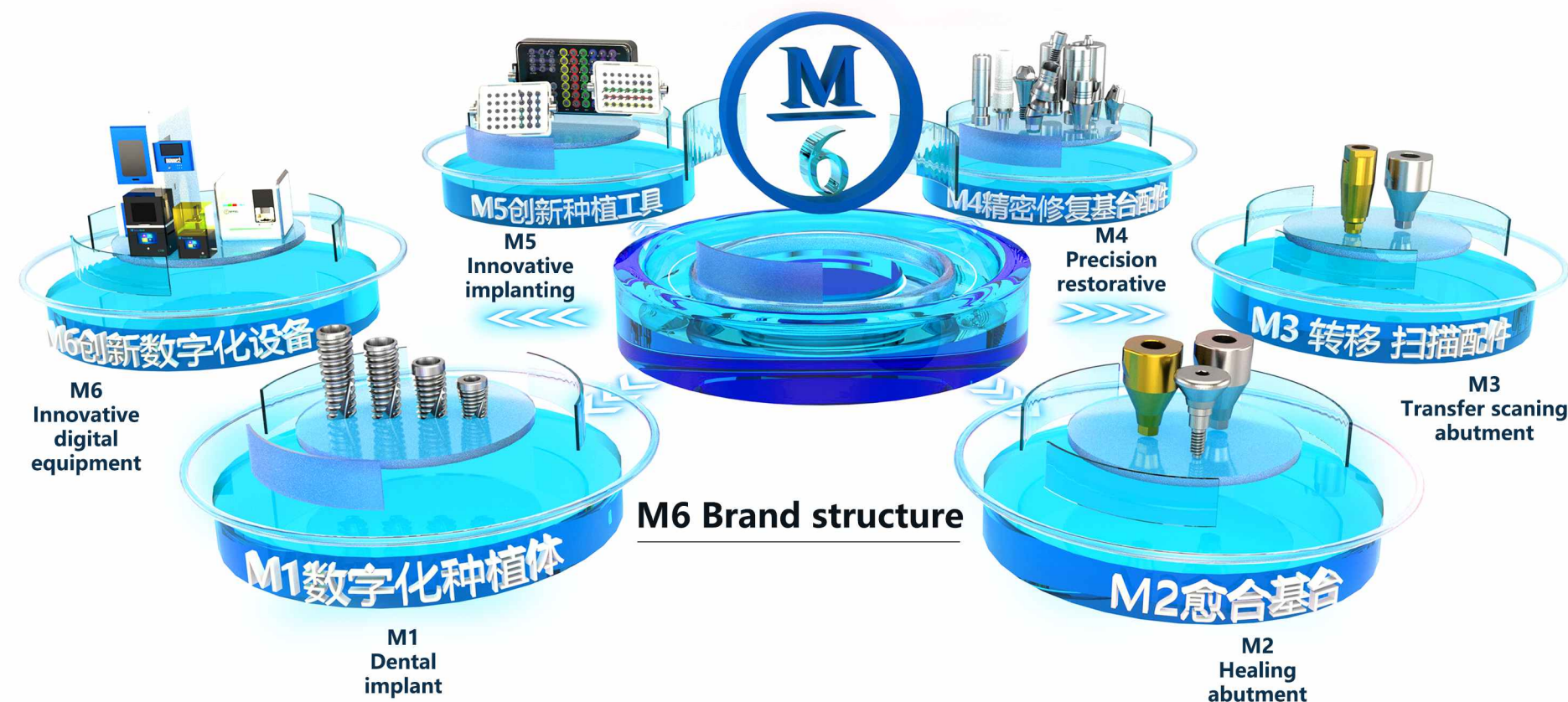
Choose M6

With the perfect implant restoration as the guide, focus on innovative technology, through the clinical technician digital application of knowledge based on equipment/ implant accessories/ professional training/difficult cases to solve/surgical solutions, from the first phase of cavity preparation implants to the upper permanent restoration to provide you with digital oral implants one-stop service.

Core Values

With the core values of innovation, customer achievement, integrity and responsibility, Hetailai people promote new technologies together with industry colleagues and step into the digital future.

INNOVATION FOR A SMART FUTURE



The production capacity is 420,000 pieces per month

45 imported automatic production lines in **3** workshops in Shenzhen, Dongguan and South Korea

Quality assurance

Product quality inspection process must pass intelligent full inspection of equipment - semi-automatic inspection equipment - manual inspection, average 20 procedures and quality inspection process, to ensure product accuracy and quality.



2012

Founded in 2012, Hetele Digital Dental has been focusing on the innovative application of digital dental implants for 10 years. We provide one-stop service to the dental labs by "total solution". Our original "3S Digital Implant Service" has supported the start and development of

2016

In 2016, with the participation of several implantologists and restorative dentists, we set up a "Research and Development Center" and a presentation center for digital dentistry. The collaboration of all parties provides high-quality technical support for the growing number of

2018

In 2018, we launched the research and development of implant restoration category, focusing on the research and development of AIO system in the field of implant restoration segment to fully carry out the licensing of AIO system. In the same year, we invested in the research and development of 3D printers and

2015

In 2015, we set up a 24-hour digital service center to provide design and processing services for dental labs, and our 24-hour commitment to high quality and fast delivery has been recognized by our European and

2017

In 2017, our high quality products and complete solutions won the favor of foreign partners to expand our products to the United States, Australia, Russia, etc. on an OEM service.

2019

In 2019, we obtained several CFDA licenses for implant accessories. Completed M6 brand system implants and peripheral accessories, and DEN-TOP brand successfully opened overseas market.

2020

In 2020, we built a digital industrial park to fully realize the integrated industry chain from equipment production to implant restoration. And the establishment of the implant milling machine division will not forget the original intention to focus on the innovative application of digital dental implants, and constantly overcome

2021

In 2021, in order to solve technical problems, we do training 200+ times, oriented to perfect implant restoration, dedicated to the complex challenges of dental restoration, the professional technical team composed of professors from Taiwan provides free training public courses on digital technical knowledge, equipment operation, software design, etc. The first 10 cooperative tour exhibitions with Shining 3D were held in Hangzhou, Quanzhou, Fuzhou, Changsha, Shijiazhuang, Taiyuan, Chengdu, Chongqing, Luoyang and Xi'an. The tour courses are digital-oriented combined with clinical applications, case studies, analysis of difficult cases, and seminars on new technology solutions for colleagues to exchange and share, and make progress together to promote the progressive development of the industry.

2022

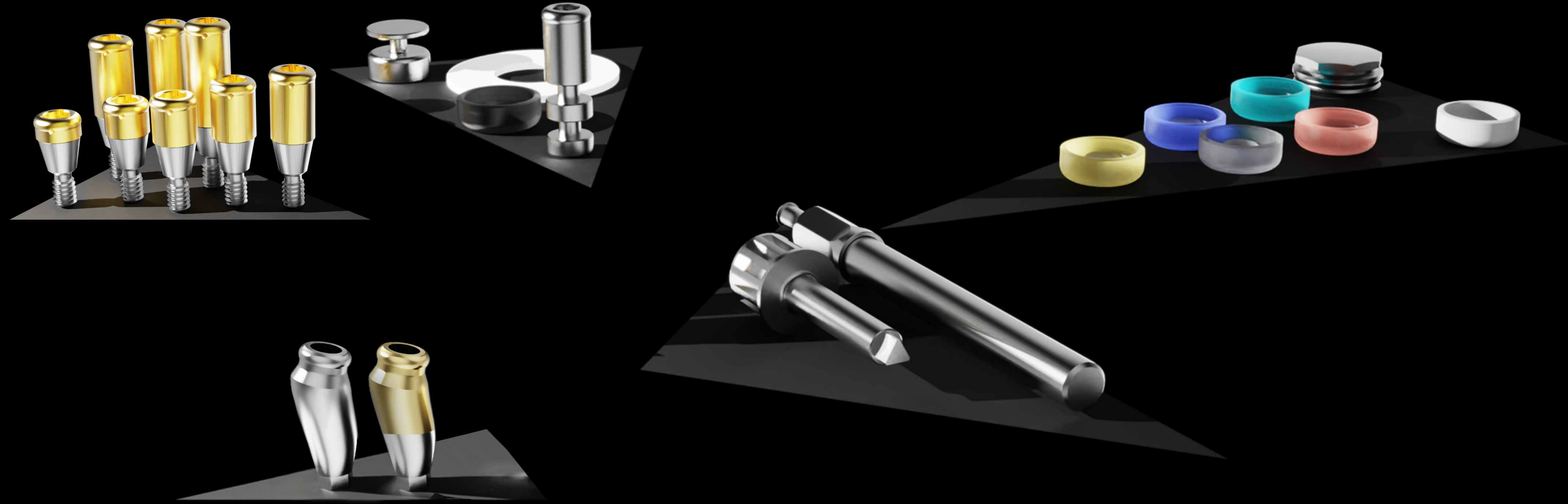
In 2022, we started a number of CFDA Class III certifications, focusing on research and development of innovative implant restorations, investing more manpower and equipment for research and development, and setting up several laboratories and corresponding instruments for new product testing. The capital investment more than 10 million, 12 imported fully automatic production equipment, now Shenzhen / Korea / Dongguan a total of 40 fully automatic production line, the monthly production capacity of 370,000 pieces.

Ten years
10
history of Hetailai dental

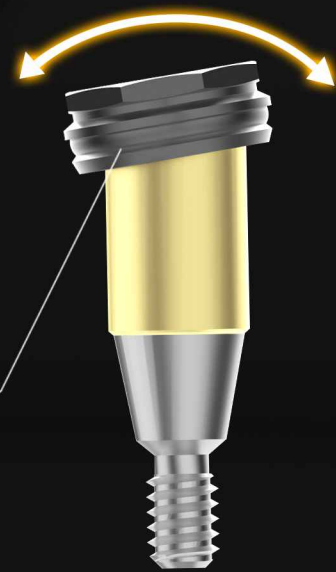
“The best solution for middle aged and elderly edentulous patients”

Locator abutment

Locator restorations require only 2-4 implants, reducing patient pain and treatment risk

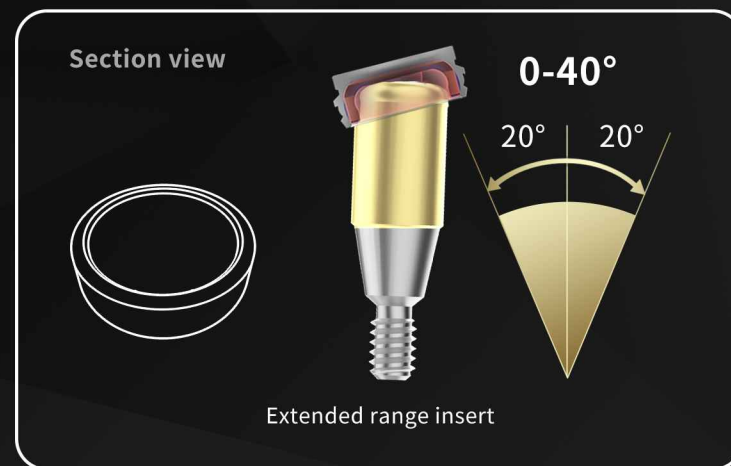
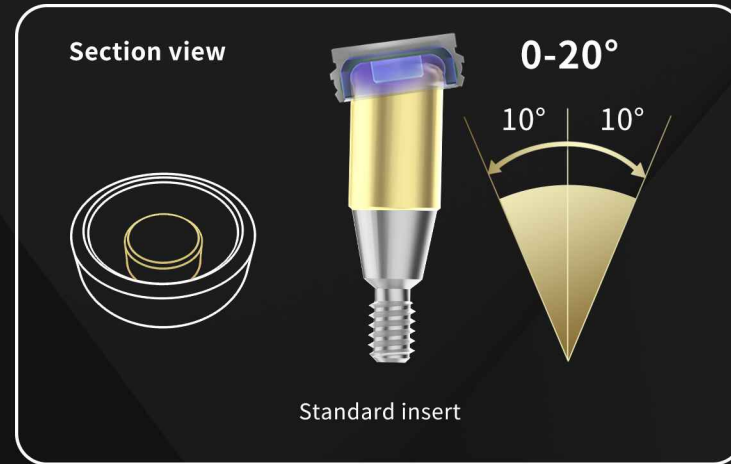


Divergence retention
Reduce retention loss



Divergence retention

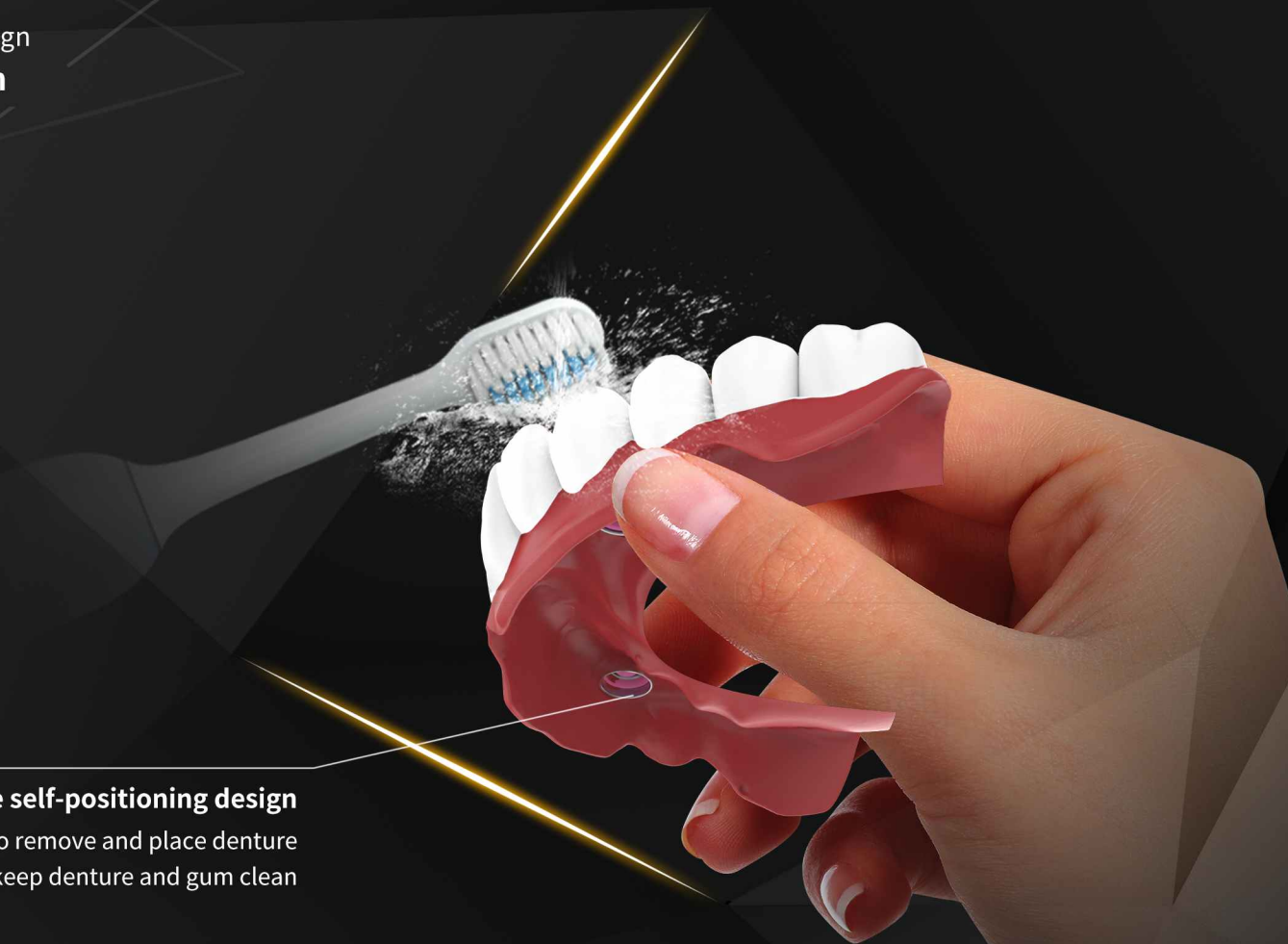
Could do a implant divergence up to 40°. The permanent retention insert in the metal housing in the restorative resin allows for rotational movement to absorb stress without loss of retention



Removable design
Easy to clean



Removable self-positioning design
Easy for patients to remove and place denture
Good to keep denture and gum clean



Reduce treatment risk

Shorten surgical time

Reduce treatment risk

Only 2-4 implants are required, and patient pain is reduced at the same time



Vacuum TiN coating

Gr5 titanium from Germany
High strength anti-corrosion and wear-resistant



Shorten surgical time

Less implant position, save time and labour

Triple retention force Make it stable

Steps to place retention insert and metal housing

2

Permanent retention insert
with groove design

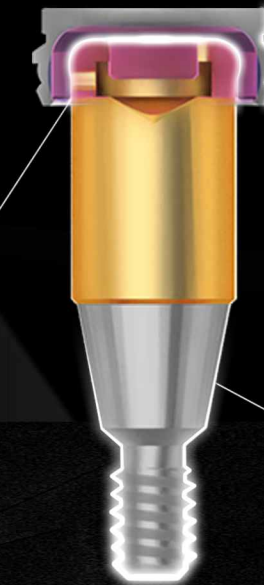
1

Metal housing with groove design

3

Integral design

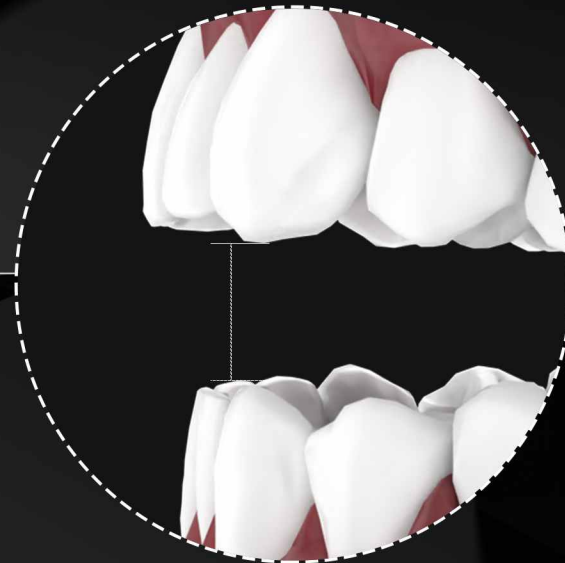
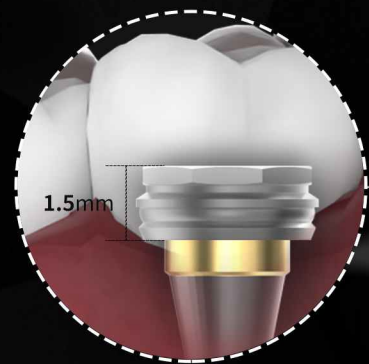
screw fixation free from dropping
reduce the risk of breakage



For special indications

Indications for short vertical distance of the occlusion

Minimum supragingival distance is only 1.5 mm.



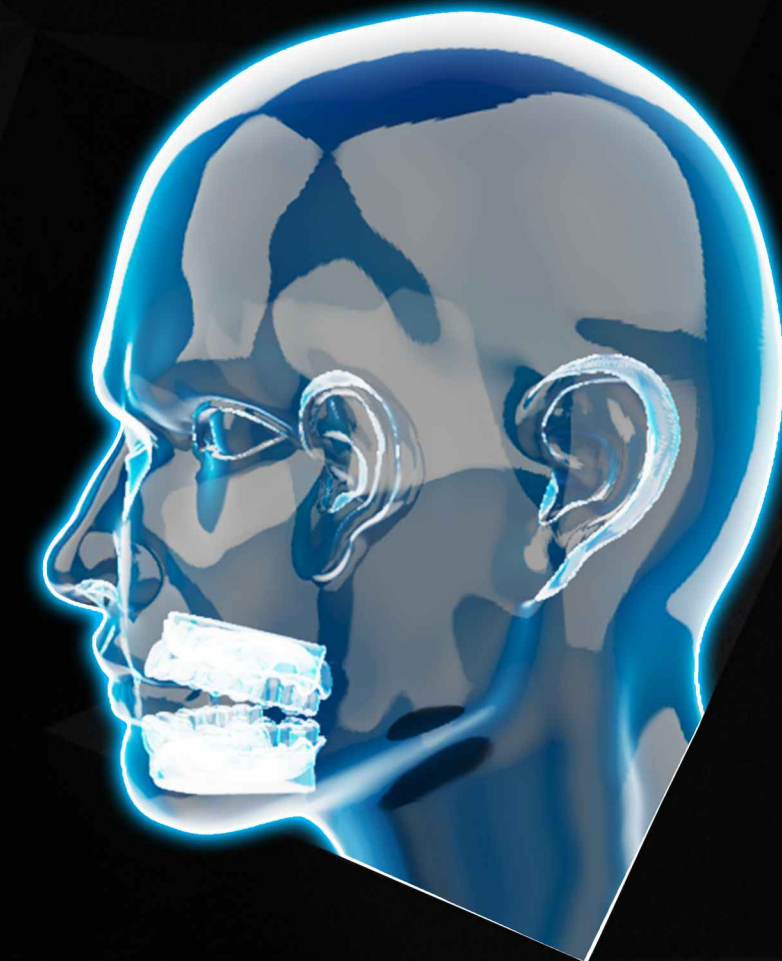
Accidents, TMJ ankylosis, mandibular dysplasia, limited mouth opening...
Indications leading to short vertical distance of occlusion

Aesthetic restoration

Slows down face collapse

Slows down face collapse

Restoration of the lip line and hard and soft tissue contours to improve aesthetics in cases of poor jaw relations, compensating for alveolar bone resorption and achieving a certain aesthetic restorative effect.

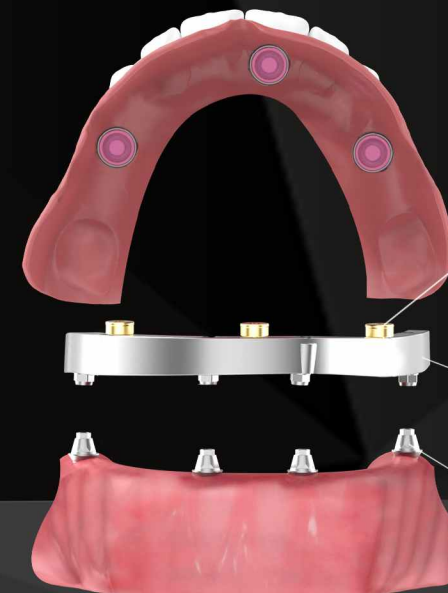
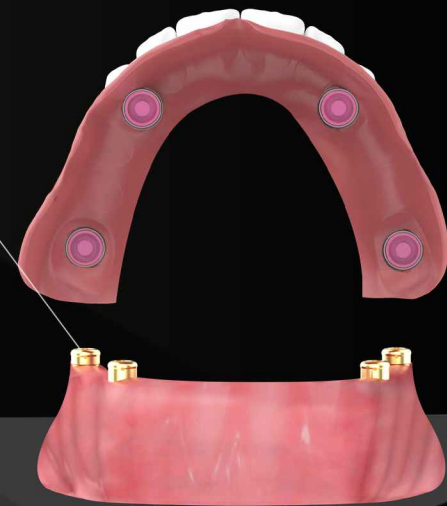


Effective restoration

Restoration method with locator abutment

2-4 implant restoration

The denture connect to the abutment through the housing and retention insert, and the implant carries the chewing force, avoiding complications such as compression of the gums by the conventional adsorptive denture, low chewing efficiency, alveolar bone atrophy, etc., and the chewing force is 4-5 times higher than that of the conventional denture.



Bar locator

balance the carrying force

Bar

Multi-unit abutment



Bar locator



Custom locator abutment



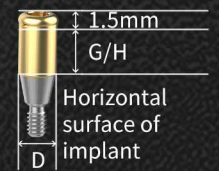
Locator abutment

Locator abutment - Custom locator abutment

Different size and shape, could be customized, meets different complex cases needs

Work flow of locator restoration

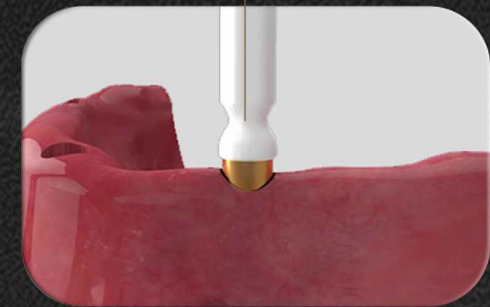
Locator abutment



GH: 1-8mm



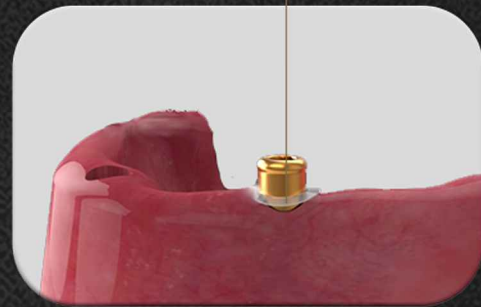
Custom locator abutment



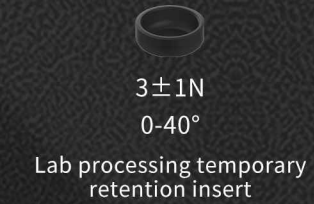
Use carrier to place locator, and fix it with screwdriver



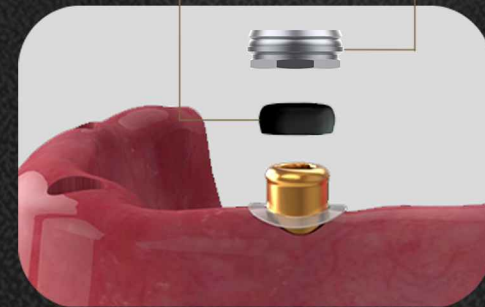
block-out spacer Anti-adhesive



Place block-out spacer



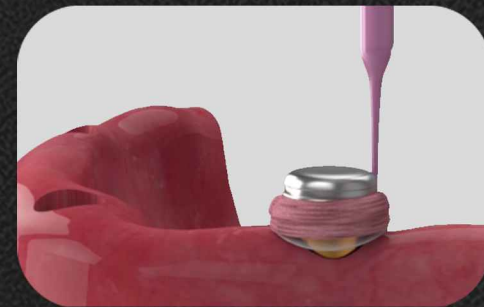
3±1N
0-40°
Lab processing temporary retention insert



Place lab processing temporary retention insert



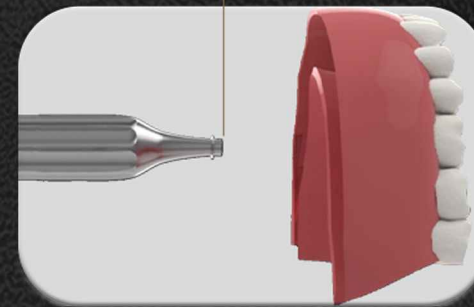
Metal housing



Bonding of the lab's temporary retention insert and the metal housing to the denture with a self-curing base resin



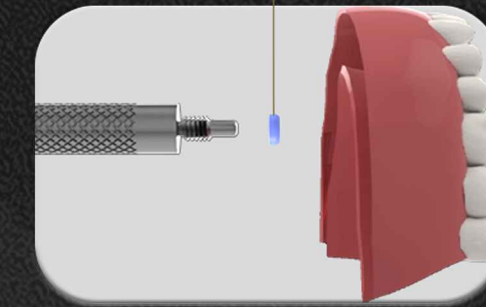
Core tool



After the self-curing base resin has set, trim and remove the lab's temporary retention insert with the core tool

Transparent-standard insert 6±1N 0-20°	Yellow-standard insert 12±1N 0-20°	Purple-standard insert 18±1N 0-20°
--	--	--

White-extended range insert 6±1N 0-40°	Green-extended range insert 12±1N 0-40°	Red-extended range insert 18±1N 0-40°
--	---	---



Place permanent retention insert



Final restoration



Place denture, finish the final restoration

