

## B&B

### System: EV/3P

Size	Engaged	Non-engaged
------	---------	-------------

M



### System: EV/3P/WIDE

Size	Engaged	Non-engaged
------	---------	-------------

R



## Anthogyr

### System: Bone Level

Size	Engaged	Non-engaged
------	---------	-------------

2.8



R



## Zimmer

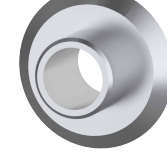
### System: Tapered Screw-Vent

Size	Engaged	Non-engaged
------	---------	-------------

M3.5



R4.5



W5.7



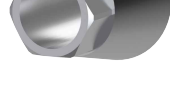
### System: Azure

Size	Engaged	Non-engaged
------	---------	-------------

3.5/4.0



4.5/5.0



## Biomet 3i

### System: Certain

Size	Engaged	Non-engaged
------	---------	-------------

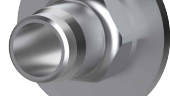
3.4



4.0



5.0



6.0



## XIVE

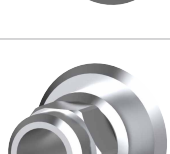
### System: xive-s plus

Size	Engaged	Non-engaged
------	---------	-------------

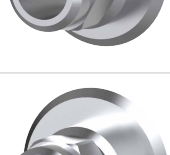
3.4



3.8



4.5



5.5



## ICX

### System: Premium/ACTIVELIQUID/ACTIVE-MASTER

Size	Engaged	Non-engaged
------	---------	-------------

BL

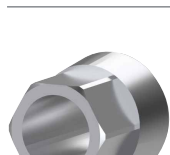


## CLC

### System: CONIC

Size	Engaged	Non-engaged
------	---------	-------------

/



## ITI Straumann

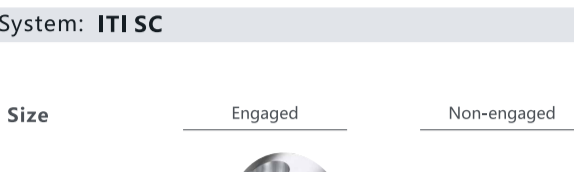
### System: Tissue Level

Size Engaged Non-engaged



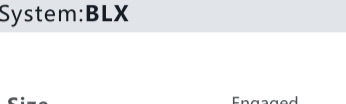
### System: Bone level

Size Engaged Non-engaged



### System: ITI SC

Size Engaged Non-engaged



### System: BLX

Size Engaged Non-engaged



### System: TLX

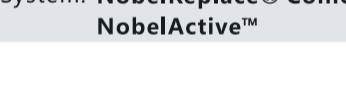
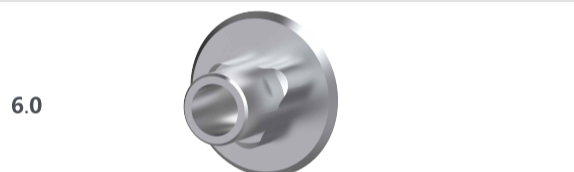
Size Engaged Non-engaged



## Nobel BioCare

### System: NobelReplace® Tapered Replace Select™ Tapered Replace Select™ Tapered PMC

Size Engaged Non-engaged



### System: NobelReplace® Conical Connection NobelReplace® Conical Connection PMC NobelActive™

Size Engaged Non-engaged



## Thommen

### System: SPI

Size Engaged Non-engaged



## Neodent

### System: GM

Size Engaged Non-engaged



## Bredent

### System: narrowSKY/blueSKY/SKY® classic

Size Engaged Non-engaged

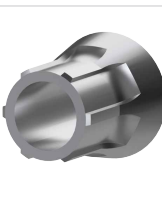



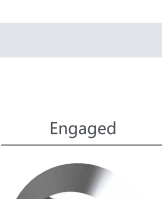


## Astra

### System: Osseo Speed™-TX

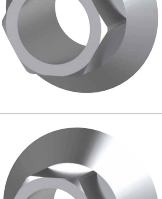

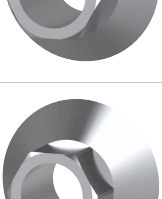

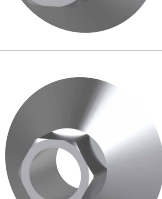
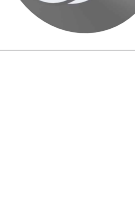

Size	Engaged	Non-engaged
3.0		
3.5/4.0		
4.5/5.0		

### System: Osseo Speed™ EV

Size	Engaged	Non-engaged
3.0		
3.6		
4.2		
4.8		
5.4		


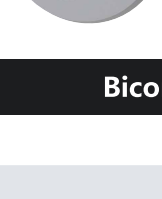
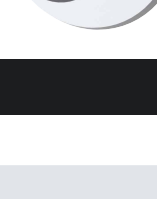
## Bego

### System: S /RI

Size	Engaged	Non-engaged
3.25/3.75		
4.1		
4.5		
5.5		



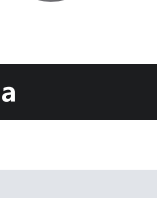
## SIC

### System: ace/max/tapered

Size	Engaged	Non-engaged
3.3		
4.2		


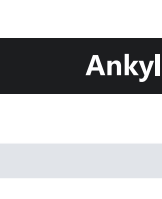
## Bicon

### System: /

Size	Engaged	Non-engaged
2.0		
2.5		
3.0		

## Sweden&Martina

### System: premium

Size	Engaged	Non-engaged
3.3		
3.8		
4.3		
5.0		

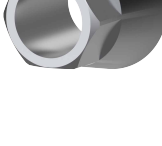
## Ankylos

### System: C

Size	Engaged	Non-engaged
R		

## Pattop

### System: /

Size	Engaged	Non-engaged
/		

## Biohorizons

System: /

Size

Engaged

Non-engaged

3.0



3.5



4.5



5.7



## Biodenta

System: Bone Level

Size

Engaged

Non-engaged

B0



B1



B2



## C tech

System: EL

Size

Engaged

Non-engaged

/



## ZUGA

System: /

Size

Engaged

Non-engaged

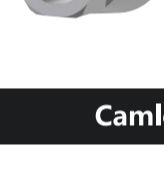
3.5



4.3



5.0



## Camlog

System: Camlog

Size

Engaged

Non-engaged

3.3



3.8



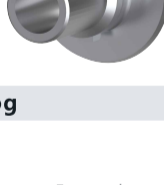
4.3



5.0



6.0



System: Conelog

Size

Engaged

Non-engaged

3.3



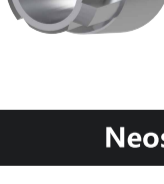
3.8



4.3



5.0



## Neoss

System: /

Size

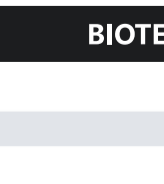
Engaged

Non-engaged

3.25



R



## BIOTECH

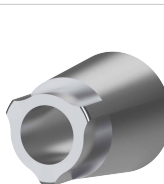
System: /

Size

Engaged

Non-engaged

3.0



R



## Ratio

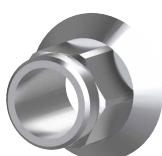
System: /

Size

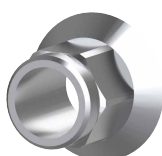
Engaged

Non-engaged

mini



S/RP



L/WP



## Implant direct

System: LEGACY™ 4

Size

Engaged

Non-engaged

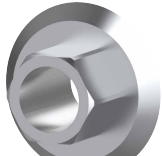
3.0



3.5



4.5



5.7



## Medentika

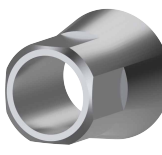
System: /

Size

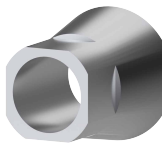
Engaged

Non-engaged

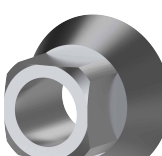
M



R



W



## Duplo

System: /

Size

Engaged

Non-engaged

2.0



2.5



3.0

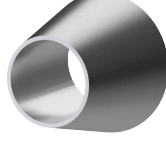


## Osstem

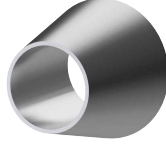
### System: TS

Size	Engaged	Non-engaged
------	---------	-------------

M



R



### System: SS

Size	Engaged	Non-engaged
------	---------	-------------

4.8



6.0

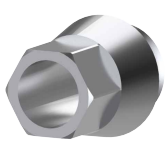


## CSM

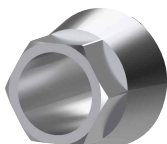
### System: /

Size	Engaged	Non-engaged
------	---------	-------------

2.1



2.5

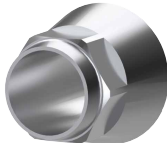


## Dentium

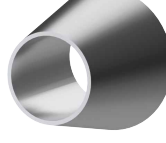
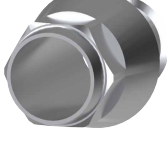
### System: Super Line

Size	Engaged	Non-engaged
------	---------	-------------

3.6



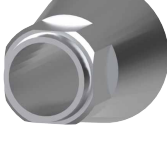
R



### System: NR Line

Size	Engaged	Non-engaged
------	---------	-------------

R



### System: SimpleLine II

Size	Engaged	Non-engaged
------	---------	-------------

R



W



## S NUC

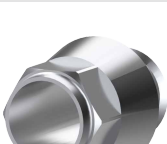
### System: AF

Size	Engaged	Non-engaged
------	---------	-------------

M



R

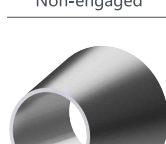


## DIO

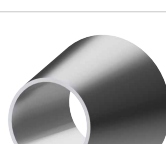
### System: SM Torx

Size	Engaged	Non-engaged
------	---------	-------------

N



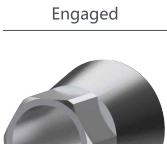
R/W



### System: UFII

Size	Engaged	Non-engaged
------	---------	-------------

N



R/W

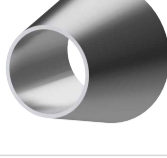
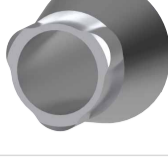


## Megagen

### System: EZ PIUS

Size	Engaged	Non-engaged
------	---------	-------------

M



R/W



### System: Any Ridge

Size	Engaged	Non-engaged
------	---------	-------------

/



### System: Mini

Size	Engaged	Non-engaged
------	---------	-------------

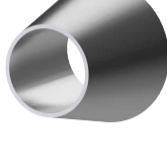
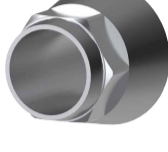
/



### System: Any One

Size	Engaged	Non-engaged
------	---------	-------------

/

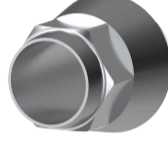


## NeoBiotech

### System: IS

Size	Engaged	Non-engaged
------	---------	-------------

R

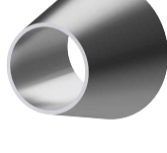
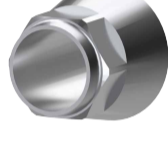


## INNO/CWM

### System: /

Size	Engaged	Non-engaged
------	---------	-------------

R



## Dentis

### System: Dentis-SQ

Size	Engaged	Non-engaged
------	---------	-------------

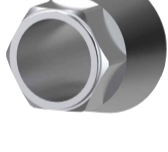
3.0



M



R

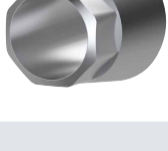


## Warantec

### System: IT-R

Size	Engaged	Non-engaged
------	---------	-------------

R



### System: IU-R

Size	Engaged	Non-engaged
------	---------	-------------

R



## SG

### System: SST

Size	Engaged	Non-engaged
------	---------	-------------

/



## IBS

### System: /

Size	Engaged	Non-engaged
------	---------	-------------

R

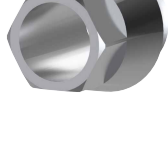


## ZENOIS

### System: /

Size	Engaged	Non-engaged
------	---------	-------------

R



## JUST

System: /

Size

Engaged

Non-engaged

2.0



3.0



## AB

System: /

Size

Engaged

Non-engaged

R



System: /

Size

Engaged

Non-engaged

M



## Adin

System: Touareg-OS/S

Size

Engaged

Non-engaged

R



System: CloseFit

Size

Engaged

Non-engaged

UNP



NP



RP



WP



## Cortex

System: Hexagonal

Size

Engaged

Non-engaged

/



System: Conical Connection

Size

Engaged

Non-engaged

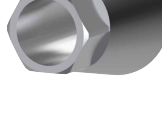
NP



RP



WP



## MIS

System: Seven/Lance

Size

Engaged

Non-engaged

M



R



W



System: C1

Size

Engaged

Non-engaged

NP



SP



WP



## Alpha-Bio

System: ICE/SPI/DFI

Size

Engaged

Non-engaged

R



## Dentin

System: Classic/Prestige

Size

Engaged

Non-engaged

R



## Datsing

### System: Datsing (I)

Size	Engaged	Non-engaged
------	---------	-------------

M



R



## CANSUN/TAISHAN

### System: TK-GY

Size	Engaged	Non-engaged
------	---------	-------------

M



R



## Trausim

### System: BL

Size	Engaged	Non-engaged
------	---------	-------------

NC



RC



### System: TL

Size	Engaged	Non-engaged
------	---------	-------------

RP



WP



## KeRunXi Medical

### System: Apex

Size	Engaged	Non-engaged
------	---------	-------------

NC



RC



## Wego

### System: /

Size	Engaged	Non-engaged
------	---------	-------------

N



R



## Bioconcept

### System: BV

Size	Engaged	Non-engaged
------	---------	-------------

M



R



### System: BC-Tissue Level

Size	Engaged	Non-engaged
------	---------	-------------

RN



WN



### System: BC-Bone Level

Size	Engaged	Non-engaged
------	---------	-------------

NC



RC



## LeadOss

### System: BL

Size	Engaged	Non-engaged
------	---------	-------------

N



R



## CASANGELS

### System: /

Size	Engaged	Non-engaged
------	---------	-------------


M



R



# Dental Master

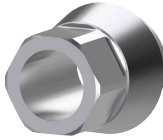
 System: **DM**

Size

Engaged

Non-engaged


NP



RP



# Anker

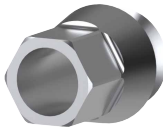
 System: **SB-I/SB-II/SB-III**

Size

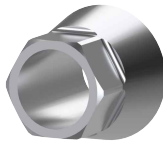
Engaged

Non-engaged


N



R



# T Plus

 System: /

Size

Engaged

Non-engaged

R

