

MUA platform+screw+ screwdriver reference chart

30+brands 40+systems 60+sizes


Europe&USA 



Nobel BioCare

Platform diameter

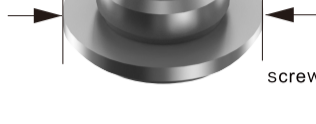
4.8

 System: Active
Size: NP




screw interface

 System: Active
Size: RP



screwdriver interface

 angle: 0~30°customizable

Straumann

Platform diameter

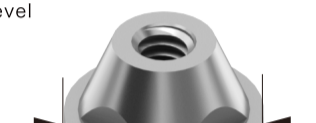
4.6


 System: Bonelevel
Size: NC




screw interface

 System: Bonelevel
Size: RC



 System: BLX
Size: RB/WB

 angle: 0~30°customizable

Platform diameter

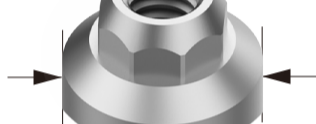
4.8


 System: Tissue level
Size: RN



screw interface

 System: Tissue level
Size: WN




 angle: 0~30°customizable

ICX

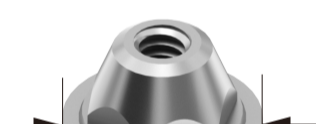
Platform diameter

4.8


 System: Templant
Size: BL



screw interface



screwdriver interface

 angle: 0~30°customizable

B&B

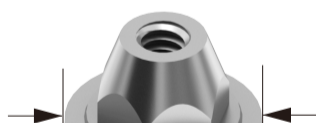
Platform diameter

5.0


 System: /
Size: R



screw interface




screwdriver interface

 angle: 0~30°customizable

C-TECH

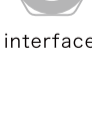
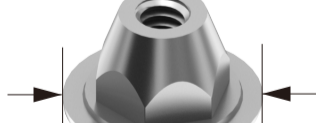
Platform diameter

5.0

 System: EL
Size: R



screw interface




screwdriver interface

 angle: 0~30°customizable

BEGO


Platform diameter

5.1

 System: /
Size: 3.25-3.75



screw interface

 System: /
Size: 4.1




screwdriver interface

 angle: 0~30°customizable

ZIMMER


Platform diameter

4.5

 **System:** Tapered Screw-Vent
Size: 3.5

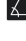


screw interface

 **System:** Tapered Screw-Vent
Size: 4.5

 **System:** Tapered Screw-Vent
Size: 5.7




 **angle:** 0~30°customizable

SIC


Platform diameter

5.0

 **System:** ace/max
Size: 3.3



screw interface

 **System:** ace/max
Size: 4.2



screwdriver interface

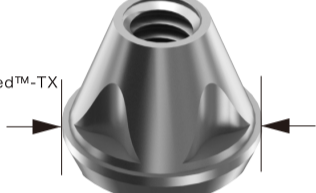
 **angle:** 0~30°customizable

ASTRA

Platform diameter

3.5

 **System:** Osseo Speed™-TX
Size: 3.5-4.0



F042/F043



screw interface

 **System:** Osseo Speed™-TX
Size: 4.5-5.0



F042-1/F043-1



screwdriver interface

 **angle:** 0~30°customizable


Platform diameter


3.6


 **System:** EV
Size: 3.0




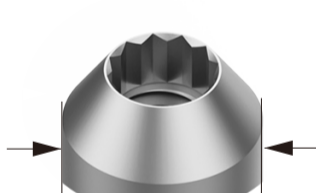
screw interface

 **System:** EV
Size: 3.6

 **System:** EV
Size: 4.2

 **System:** EV
Size: 4.8

 **System:** EV
Size: 5.4



screwdriver interface

 **angle:** 0~30°customizable

COMLOG


Platform diameter


4.3

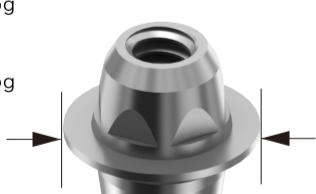
 **System:** conelog
Size: 3.3



screw interface

 **System:** conelog
Size: 3.8

 **System:** conelog
Size: 4.3




screwdriver interface

 **angle:** 0~30°customizable

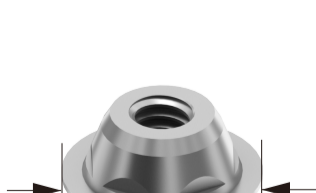
Platform diameter

6.0

 **System:** conelog
Size: 5.0



screw interface




screwdriver interface

 **angle:** 0~30°customizable

Anthogyr

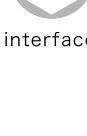
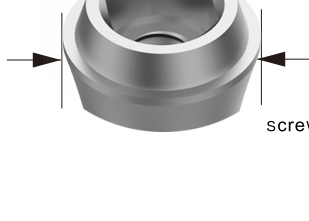
Platform diameter

4.0

 **System:** REG/PX
Size: Ø4.0



screw interface



screwdriver interface

 **angle:** 0~30°customizable

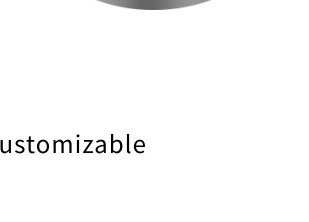
Platform diameter

4.8

 **System:** REG/PX
Size: Ø4.8



screw interface




 **angle:** 0~30°customizable

CLC

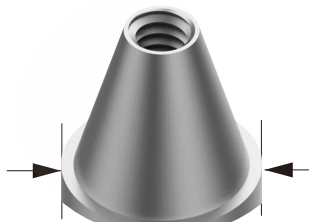
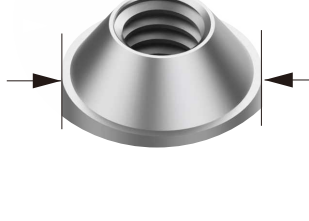
Platform diameter

4.2

 **System:** Conic
Size: /



screw interface




 **angle:** 0~30°customizable

Zuga

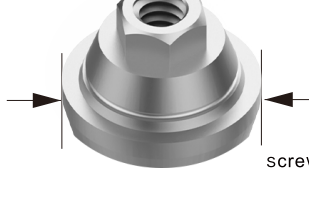
Platform diameter

4.8

 **System:** /
Size: /



screw interface




screwdriver interface

 **angle:** 0~30°customizable

ANKYLOS

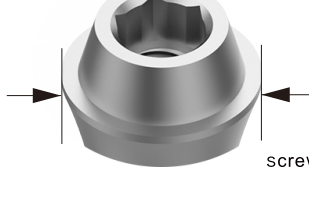
Platform diameter

4.2

 **System:** C
Size: /



screw interface



screwdriver interface

 **angle:** 0~30°customizable

NEOSS

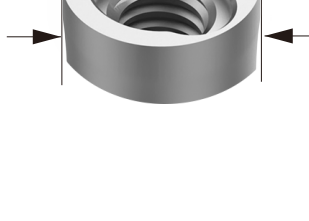
Platform diameter

4.0

 **System:** /
Size: R



screw interface



 **angle:** 0~30°customizable

BIODENTA

Platform diameter

4.5

 **System:** BL
Size: B1



screw interface

 **System:** BL
Size: B2



screwdriver interface

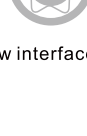
 **angle:** 0~30°customizable

Bredent

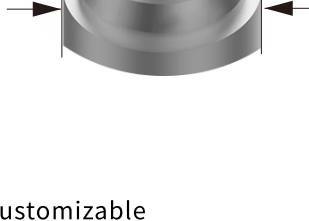
Platform diameter

4.5

 **System:** SKY
Size: NP



screw interface



 **angle:** 0~30°customizable

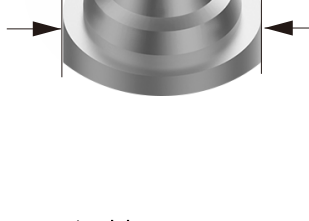
Platform diameter

5.6

 **System:** SKY
Size: RP



screw interface




 **angle:** 0~30°customizable

OSSTEM

Platform diameter

4.8

 **System:** GS/TS
Size: M



screw interface

 **System:** GS/TS
Size: R




screwdriver interface

 **angle:** 0~30°customizable

Dentium

Platform diameter

4.5/5.5

 **System:** SuperLine
Size: 45



screw interface

 **System:** SuperLine
Size: 55




screwdriver interface

 **angle:** 0~30°customizable

DIO

Platform diameter

4.8

 **System:** UF II
Size: R



screw interface




screwdriver interface

 **angle:** 0~30°customizable

Megagen

Platform diameter

5.0

 **System:** AnyOne
Size: R



screw interface

 **System:** AnyRidge
Size: R



screwdriver interface

 **angle:** 0~30°customizable

NeoBiotech

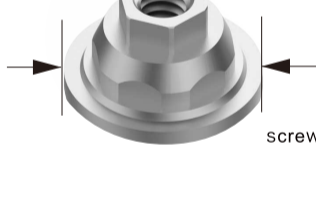
Platform diameter

4.8


 **System:** IS
Size: R



screw interface




screwdriver interface

 **angle:** 0~30°customizable

SNUC

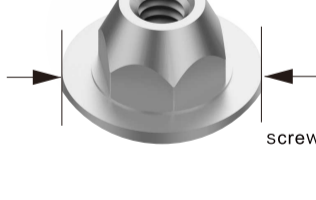
Platform diameter

4.9


 **System:** AF/AF+
Size: R



screw interface




screwdriver interface

 **angle:** 0~30°customizable

INNO/CWM

Platform diameter

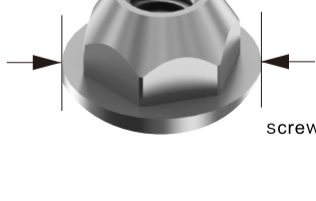
4.5/5.5

 **System:** /
Size: 45




screw interface

 **System:** /
Size: 55




screwdriver interface

 **angle:** 0~30°customizable

DENTIS

Platform diameter

4.8

 **System:** SQ
Size: M



screw interface

 **System:** SQ
Size: R



screwdriver interface

 **angle:** 0~30°customizable

ADIN

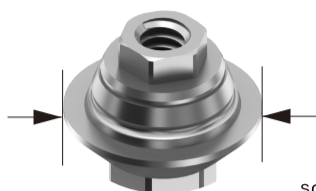
Platform diameter

4.9

 **System:** Touareg-OS/S
Size: R



screw interface



screwdriver interface

 **angle:** 0~30°customizable

MIS

Platform diameter

4.8

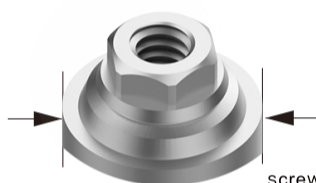
 **System:** Seven
Size: NP

 **System:** Seven
Size: SP

 **System:** Seven
Size: WP



screw interface



screwdriver interface

 **angle:** 0~30°customizable

Alpha-bio

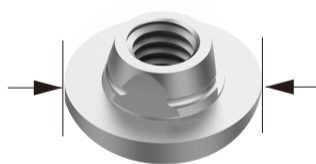
Platform diameter


4.8

 **System:** TCT-N
Size: R



screw interface





 **angle:** 0~30°customizable

CORTEX


Platform diameter

5.0

 **System:** Classix Conical
Size: NP

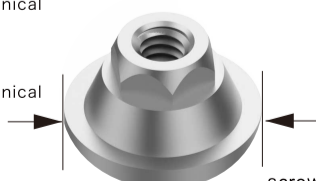
 **System:** Classix Conical
Size: RP

 **System:** Classix Conical
Size: WP

 **System:** Dynamix
Size: /



screw interface




screwdriver interface

 **angle:** 0~30°customizable

Datsing

Platform diameter

5.0

 System: I
Size: M



screw interface

 System: I
Size: R



screwdriver interface

 angle: 0~30°customizable

WEGO

Platform diameter

5.0

 System: /
Size: N



screw interface

 System: /
Size: R



screwdriver interface

 angle: 0~30°customizable

CANSUN

Platform diameter

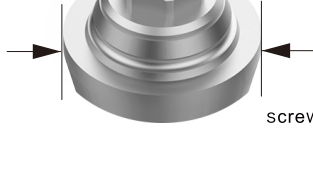
5.0

 System: /
Size: M




screw interface

 System: /
Size: R




screwdriver interface

 angle: 0~30°customizable

Bioconcept

Platform diameter

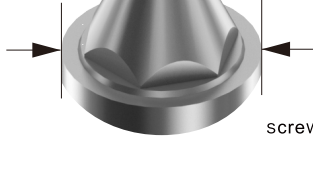
4.8

 System: BV
Size: M




screw interface

 System: BV
Size: R



screwdriver interface

 angle: 0~30°customizable

Dental Master


Platform diameter

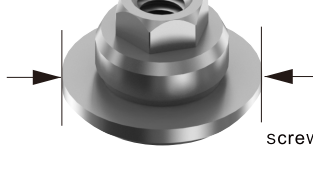
4.8

 System: DMDriving™
Size: NP




screw interface

 System: DMDriving™
Size: RP



screwdriver interface

 angle: 0~30°customizable

Trausim

Platform diameter

4.8


 System: NT
Size: NP



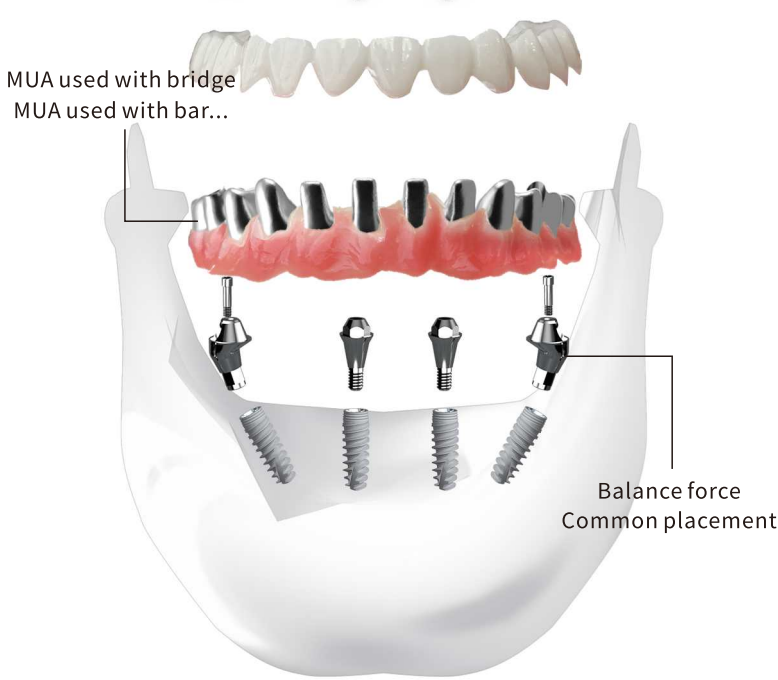
screwdriver interface

 System: NT
Size: RP



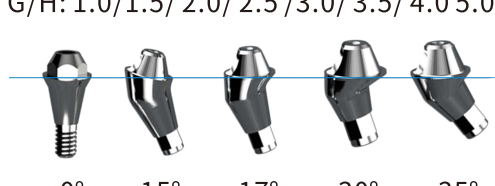
 angle: 0~30°customizable

MUA used with bridge
MUA used with bar...



Choose angle/collar height according to patient

G/H: 1.0/1.5/ 2.0/ 2.5/ 3.0/ 3.5/ 4.0 5.0



0° 15° 17° 30° 35°



MY Digital
Implant

For more details:
<https://m6cadcam-dental.com/>